



Parallels Desktop[®] Switch to Mac

Getting Started

*Parallels Holdings, Ltd.
c/o Parallels International GmbH.
Parallels International GmbH
Vordergasse 49
CH8200 Schaffhausen
Switzerland
Tel: + 49 (6151) 42996 - 0
Fax: + 49 (6151) 42996 - 255
www.parallels.com*

Copyright © 1999-2010 Parallels Holdings, Ltd. and its affiliates. All rights reserved.

This product is protected by United States and international copyright laws. The product's underlying technology, patents, and trademarks are listed at <http://www.parallels.com/trademarks>.

Microsoft, Windows, Windows Server, Windows NT, Windows Vista, and MS-DOS are registered trademarks of Microsoft Corporation.

Linux is a registered trademark of Linus Torvalds.

Mac is a registered trademark of Apple, Inc.

All other marks and names mentioned herein may be trademarks of their respective owners.

Contents

Introduction	4
<hr/>	
System Requirements	5
<hr/>	
Mac Requirements	5
Source Computer System Requirements	6
<hr/>	
Installing the Components	8
<hr/>	
Installing Parallels Desktop.....	8
Installing Parallels Transporter Agent.....	10
Installing Parallels Transporter Agent in Windows	11
Installing Parallels Transporter Agent in Linux	13
Removing Parallels Transporter Agent	13
Removing Parallels Transporter Agent From Windows	13
Removing Parallels Transporter Agent From Linux	14
<hr/>	
Activating Parallels Desktop	15
<hr/>	
Starting Parallels Desktop	16
<hr/>	
The Welcome Window	17
<hr/>	
Moving Windows Computer to Mac	18
<hr/>	
Using Parallels USB Cable	19
Using Network or FireWire	23
Using an External Storage Device	27
<hr/>	
What's Next	31
<hr/>	
Installing and Updating Parallels Tools	31
Working With the Virtual Machine	32
Changing View Modes.....	33
Configuring the Virtual Machine	34
<hr/>	
Getting Help	35
<hr/>	
Feedback	35

CHAPTER 1

Introduction

Parallels Desktop Switch to Mac is designed to help you move the whole of your PC to your Mac in three easy steps.

1. Learn your Mac

If you are new to Mac OS X, watch the educational tutorials included in Parallels Desktop Switch to Mac to learn about all Mac features. Once you've learned your Mac, you are ready to make the move.

2. Migrate

Moving your Windows with Parallels Desktop Switch to Mac is as easy as plug and click. The Parallels USB cable and Parallels Transporter (p. 18) move everything - the Windows installation, applications, and files - right to your Mac. For successful migration you need the following components:

- Parallels USB cable.
- Parallels Transporter Agent installed on your Windows computer. It will collect the data and transfer it to Parallels Transporter using USB cable, network, or an external storage device.
- Parallels Transporter installed on your Mac. Parallels Transporter is installed together with Parallels Desktop Switch to Mac. This application receives data from Parallels Transporter Agent and transfers it to a Parallels virtual machine on your Mac.



To move your Windows computer to your Mac, connect the computers using the Parallels USB Cable, start Parallels Transporter and Parallels Transporter Agent, and follow the assistant. You can also transfer your Windows computer over network or using an external storage device.

3. Run Windows on your Mac

When your PC is transferred to a virtual machine on your Mac, you can work in Windows applications side-by-side with your Mac applications without any need to restart the computer.

CHAPTER 2

System Requirements

This chapter lists system requirements for your Mac and the source computer. Before you start migrating, make sure that your computers meet these requirements.

In This Chapter

Mac Requirements	5
Source Computer System Requirements.....	6

Mac Requirements

Parallels Desktop Switch to Mac can be installed on any Intel-based Mac that complies with the requirements listed here.

Hardware Requirements

- Any Macintosh computer with an Intel processor (1.66 GHz or greater). To run 64-bit operating systems in virtual machines, an Intel Core 2 or later processor is required.
- Minimum 1 GB of memory, 2 GB of memory is recommended.

Note: Your Mac must have enough memory to run Mac OS X and your Mac applications, plus the memory required for the virtual machine guest operating system and the applications installed in it.

- At least 1 GB of disk space on the boot volume (Macintosh HD) for Parallels Desktop Switch to Mac installation.
- About 15 GB of disk space for each virtual machine.

Software Requirements

- Mac OS X v10.6.3 Snow Leopard or later
- Mac OS X v10.5.8 Leopard or later

To get information about your Mac OS X version, type of processor, and amount of memory, choose **About This Mac** from the **Apple** menu.

Source Computer System Requirements

To migrate data from a physical computer, you need to install Parallels Transporter Agent on it. Parallels Transporter Agent can be downloaded from the Parallels Download Center and installed on computers that meet the following requirements.

Hardware Requirements

- 700 (or higher) MHz x86 or x64 processor (Intel or AMD).
- 256 MB or more of RAM.
- 50 MB of hard disk space for installing the Parallels Transporter Agent package.
- Ethernet or WiFi network adapter for migrating over network.
- USB port for migrating using the Parallels USB cable.

Supported Windows Systems

OS Name	32-bit	64-bit	Migration Method
Windows 7	✔	✔	USB, Network, External Storage
Windows Vista® Ultimate, Enterprise, Business, Home SP0, SP1, SP2	✔	✔	USB, Network, External Storage
Windows Server® 2003 Standard, Enterprise, Web SP2	✔	✔	Network, External Storage
Windows XP Home, Professional SP2, SP3	✔	✔	USB, Network, External Storage
Windows 2000 Professional	✔		External Storage

Warning! OEM Windows operating systems may not work with Parallels Desktop after you migrate them to virtual machines. OEM operating systems are only distributed when they are sold with computers. The best example of an OEM operating system is the copy of Windows that comes pre-installed when you buy a new PC.

Supported Linux Systems

OS Name	32-bit	64-bit	Migration Method
Red Hat® Enterprise Linux 5	✔	✔	Network, External Storage
Ubuntu® Linux 8.04	✔	✔	Network, External Storage

Supported File Systems

- FAT16/32 (Windows only)

- NTFS (Windows only)
- Ext2/Ext3

Parallels Transporter does not support migrating Windows dynamic volumes and Linux logical volumes (LVM). If the file system is not supported, Parallels Transporter copies all disk sectors successively and you may experience problems using the resulting virtual machine.

CHAPTER 3

Installing the Components

To be able to migrate your PC to a virtual machine on your Mac, you need to install Parallels Desktop Switch to Mac on your Mac and Parallels Transporter Agent on the PC that you are going to migrate. In this chapter, you will find the detailed system requirements for both computers as well as step-by-step installation instructions.

In This Chapter

Installing Parallels Desktop.....	8
Installing Parallels Transporter Agent.....	10
Removing Parallels Transporter Agent.....	13

Installing Parallels Desktop

To install Switch to Mac, insert the Switch to Mac installation disc into the optical drive of your Mac, open the Switch to Mac DMG package, and double-click **Install**.

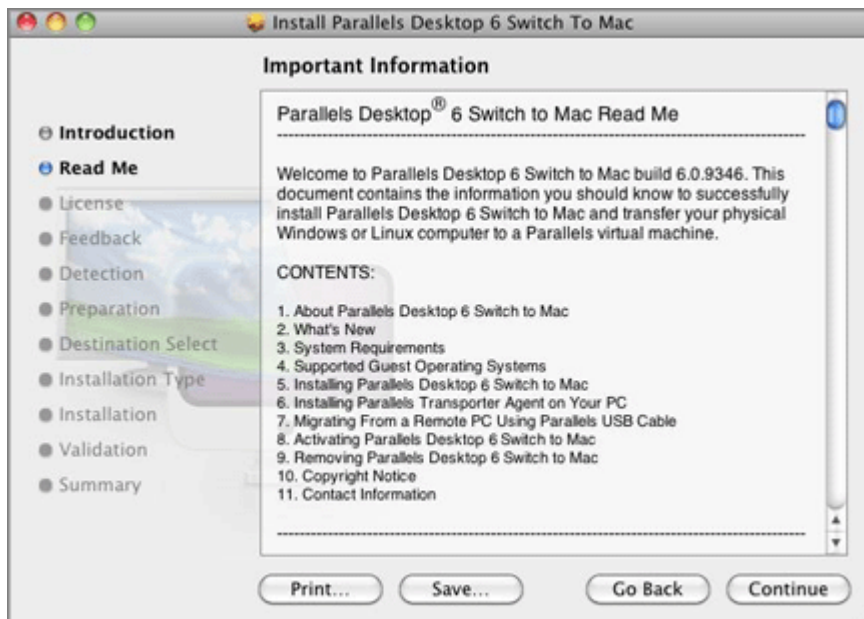
- 1 Parallels Desktop Switch to Mac will connect to the Parallels update server and check for available updates. If there is a newer version of Parallels Desktop Switch to Mac available, you will be offered the most recent version of Parallels Desktop Switch to Mac. If you do not want to install the most recent version, you can choose to install the version from the installation media.



- If you click **Install current**, Parallels Desktop will be installed from the installation media.
- If you click **Download and install new version**, the latest version of Parallels Desktop will be downloaded and installed on your Mac.

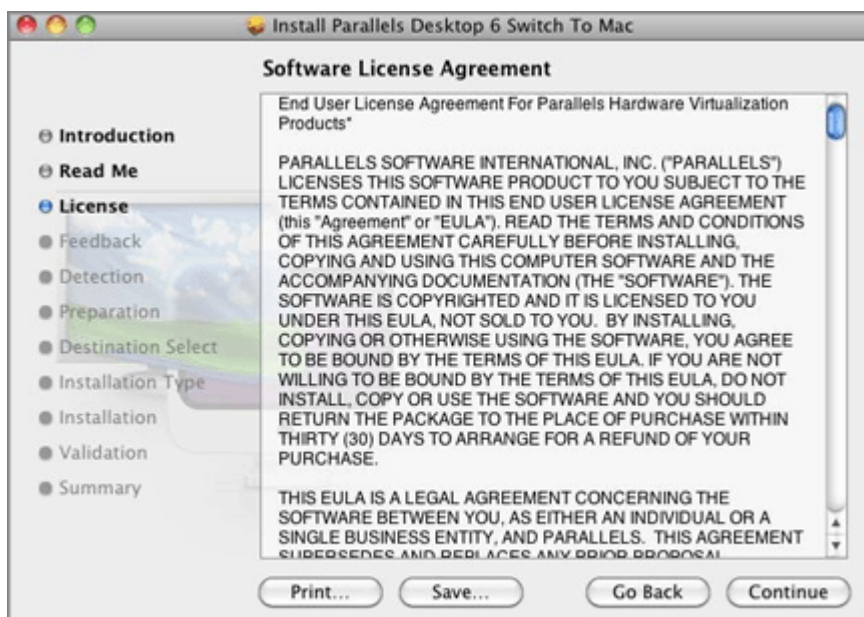
If there is no update available or your Mac is not connected to the Internet, Parallels Desktop will be installed from the current installation source.

- 2 In the **Welcome** window, click **Continue**.
- 3 In the **Important Information** window, read the product Read Me file. Click **Print** to print the document or **Save** to save it for future reading. When finished, click **Continue**.



Note: You can return to the previous steps by clicking the **Go Back** button.

- 4 In the **Software License Agreement** window, carefully read the license agreement. We recommend to print the license agreement for your records using the **Print** button or to save it for future reading using the **Save** button. When you are ready, click **Continue**.



In the pop-up dialog, click **Agree** if you agree with the terms and conditions of the license agreement.

- 5** In the **Select a Destination** window, select the hard disk where to install Parallels Desktop. You can install Parallels Desktop only on the boot volume, that is the hard disk where Mac OS X is installed. Other disks, if any, are unavailable for selection. Click **Continue**.

Note: If you have only one volume on your Mac, this step is omitted.

- 6** Click **Install** to start the Parallels Desktop installation.
- 7** Enter your password when prompted and click **OK**.
- 8** The installation progress is shown in the **Installing Parallels Desktop** window.
- 9** The Installer informs you that the installation was successful. To complete the installation, click **Close**.

After the installation, you can launch Parallels Desktop from the **Applications** folder on your Mac. The Parallels Desktop add-ons like Parallels Transporter and Parallels Mounter are available from the `/Mac HD/Library/Parallels/` folder.

Installing Parallels Transporter Agent

This section provides instructions on installing Parallels Transporter Agent on your source computer.

Installing Parallels Transporter Agent in Windows

To begin the Parallels Transporter Agent installation, insert the installation DVD in your CD/DVD-ROM drive and the installation will start automatically. If it does not start automatically, locate the `Parallels Transporter Agent.exe` file on the disk.

If your computer cannot read DVD discs, download Parallels Transporter Agent for Windows from the Parallels Download Center.

Note: You must have administrator rights to install Parallels Transporter Agent.

Installing Parallels Transporter Agent

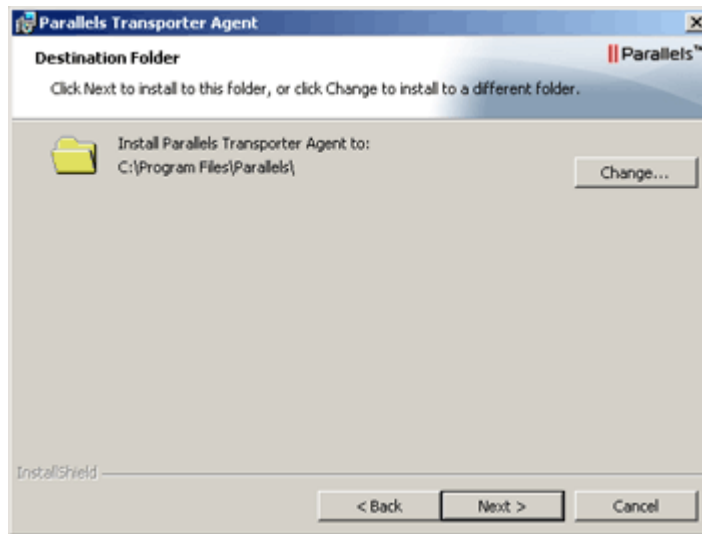
If the Parallels Transporter Agent installation has not started automatically, double-click the installation file. Parallels Transporter Agent will connect to the Parallels update server and check for available updates. If there is a newer version of Parallels Transporter Agent available, you will be offered the most recent version of Parallels Transporter Agent. If you want to install the most recent version, click **Download and install new version**. If you want to install the current version, click **Install current**.

If there is no update available or your computer is not connected to the internet, Parallels Transporter Agent will be installed from the current installation source.

- 1 In the Welcome window, click **Next**.
- 2 In the License Agreement window, carefully read the Parallels end user license agreement. Click the **Print** button to print the document. If you agree with the stated terms and conditions, select **I accept the terms in the license agreement** and click **Next**.



- 3 In the Destination Folder window, specify the folder where Parallels Transporter Agent will be installed and click **Next**. If you do not want to install to the default folder, click the **Change** button and specify your folder.



- 4 In the Ready to Install the Program window, click **Install** to start the installation.
- 5 After the installation is complete, click **Finish** to exit the wizard.

Installing the Parallels USB Cable Driver in Windows XP

If you are going to migrate the Windows physical computer to a Parallels virtual machine on your Mac using the Parallels USB cable, you need to install the Parallels USB cable driver on your source computer. To install this driver, perform the following actions:

- 1 Connect your Mac and your source computer with the Parallels USB cable supplied with your *Switch To Mac* kit. The Found New Hardware Wizard will start.
- 2 In the **Welcome** window, select the **Yes, this time only** option and click **Next**.
- 3 In the next window, select the **Install the software automatically (Recommended)** option and click **Next**.
- 4 The **Hardware Installation** warning will appear. Click **Continue Anyway** to start the installation.
- 5 When the installation is finished, you will see the **Completing the Found New Hardware Wizard** window. Click **Finish** to exit the wizard.

Installing Parallels Transporter Agent in Linux

To begin the Parallels Transporter Agent installation, locate the installation file. There are two ways to do it:

- Insert the Parallels Desktop installation DVD in your CD/DVD-ROM drive and locate the `parallels-transporter-agent.run` file in the `/Linux` directory on the disc.
- If your computer cannot read DVD discs, download Parallels Transporter Agent for Linux from the Parallels Download Center.

Note: You must have `root` privileges to install Parallels Transporter Agent in Linux.

Installing Parallels Transporter Agent

- 1 Execute the Parallels Transporter Agent installation file (with the `.run` extension).
- 2 In the introduction window, select **Next** and press **Enter**.
- 3 Carefully read the Parallels end user license agreement. If you agree with the terms of the license agreement, select **Accept** and press **Enter** to start installing Parallels Transporter Agent on your computer.

Note: Choosing **Decline** terminates the installation.

- 4 After Parallels Transporter Agent has been successfully installed, select **Exit** and press **Enter** to complete the installation.

Removing Parallels Transporter Agent

This section provides instructions on removing Parallels Transporter Agent from your source computer.

Removing Parallels Transporter Agent From Windows

Parallels Transporter Agent can be removed in two ways:

- Choose **Control Panel > Add or Remove Programs** from the Windows **Start** menu, select **Parallels Transporter Agent** in the programs list, and click **Remove**.
- Double-click the Parallels Transporter Agent installation file. This will start the **Setup** wizard that will help you remove the program.

Note: You must have administrator rights to remove Parallels Transporter Agent.

Removing Parallels Transporter Agent From Linux

To remove Parallels Transporter Agent from Linux:

- 1** Execute the Parallels Transporter Agent installation file (this is the same file you used for installing Parallels Transporter Agent).
- 2** In the introduction window, select **Next** and press Enter.
- 3** In the next window, select **Remove** and press Enter.
- 4** When Parallels Transporter Agent is successfully removed, select **Exit** and press Enter to close the wizard.

Activating Parallels Desktop

To fully run Parallels Desktop Switch to Mac, you should activate it with an activation key. If you purchased a boxed version of the program, you can find the activation key printed on the installation CD sleeve. If you purchased the program online, the activation key was sent to you by email. If you downloaded a copy of Parallels Desktop Switch to Mac to evaluate it before buying, you can get a trial activation key valid for a certain period of time.

After you activate your copy of Parallels Desktop Switch to Mac, you can run virtual machines, install operating systems and various applications in them.

If you upgraded Parallels Desktop to version 6 from the previous version, you need an upgrade activation key to activate Parallels Desktop 6. For detailed information, see the [Upgrading to Parallels Desktop 6](#) section of Parallels Desktop Switch to Mac User's Guide.

Activating Your Copy of Parallels Desktop Switch to Mac

To activate Parallels Desktop Switch to Mac:

- 1 Choose **Activate Product** from the Parallels Desktop menu.
- 2 In the activation dialog, type your product activation key into the **Activation Key** field and click **Activate** to activate your copy.

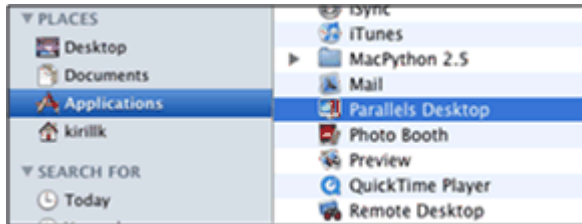


Now that your copy of Parallels Desktop is active, you need to register it.

CHAPTER 4

Starting Parallels Desktop

To start Parallels Desktop, open the **Applications** folder in Finder and double-click **Parallels Desktop**.



When you start Parallels Desktop, its icon will appear in the Dock.

To add the Parallels Desktop icon to the Dock, do one of the following:

- If Parallels Desktop is currently open, right-click its icon in the Dock and choose **Keep in Dock** from the shortcut menu.
- Open the **Applications** folder in Finder and drag the Parallels Desktop icon to the Dock.

When you open the program for the first time, you will see the **Welcome** window that will help you start working in Parallels Desktop.

In This Chapter

The Welcome Window 17

The Welcome Window

When you start Parallels Desktop for the first time, the Parallels Desktop Switch to Mac welcome window appears. A short introduction video starts and a Parallels expert welcomes you and explains what you can do in this window. The welcome window provides you with fast access to the most common Parallels Desktop dialogs and assistants, which is especially useful when first using Parallels Desktop.

From the welcome window, you can navigate between the following options:

- **Learn your Mac.** This option appears after the introduction video ends. This option allows you to watch the Learn Your Mac video tutorial.
- **New Windows installation.** This option allows you to launch New Virtual Machine Assistant to create a virtual machine with a Windows, Linux, Mac OS X, or any other supported guest operating system.

Note: If you just close the assistant without completing the creation, you will return to the Welcome screen.

- **Migrate Windows from PC.** This option allows you to transfer the whole of a physical Windows computer to a Parallels virtual machine running on your Mac. The source computer data will be transferred using Parallels Transporter. To learn more about this utility, refer to *Parallels Transporter User's Guide*.
- **Use your virtual machines.** If you have any virtual machines registered in Parallels Desktop Switch to Mac, this option opens the Parallels Virtual Machines list with these virtual machines. If you have no virtual machines registered in Parallels Desktop Switch to Mac, this option launches New Virtual Machine Assistant.



CHAPTER 5

Moving Windows Computer to Mac

Parallels Transporter enables you to move your Windows computer with all its files and applications to a Parallels virtual machine on your Mac. To move your computer, you can use one of the following ways of transferring the data:

- using the Parallels USB cable (p. 19), or
- over Network or FireWire (p. 23), or
- using an external storage device (p. 27).

In addition to these types of migration, Parallels Transporter allows you to transfer data from the Boot Camp partition. You can transfer Linux computers as well. The migration process is the same as for Windows. For detailed information, please refer to *Parallels Transporter User's Guide*.

In This Chapter

Using Parallels USB Cable	19
Using Network or FireWire	23
Using an External Storage Device	27

Using Parallels USB Cable

Warning: Product re-activation may be required in order to migrate some software applications.

To perform this type of migration, the source and host physical computers must be connected with each other by means of the Parallels USB cable. The Parallels USB cable is sold with Parallels Desktop Switch to Mac Edition. This migration method is available for Windows 7, Windows Vista, and Windows XP source physical computers only.

Note: If you are going to migrate the source Windows XP computer, you will have to install the Parallels USB cable driver on the physical source computer. For detailed information, see *Installing Parallels Transporter Agent in Windows* (p. 11).

Migrating From a Remote Computer Using the Parallels USB Cable

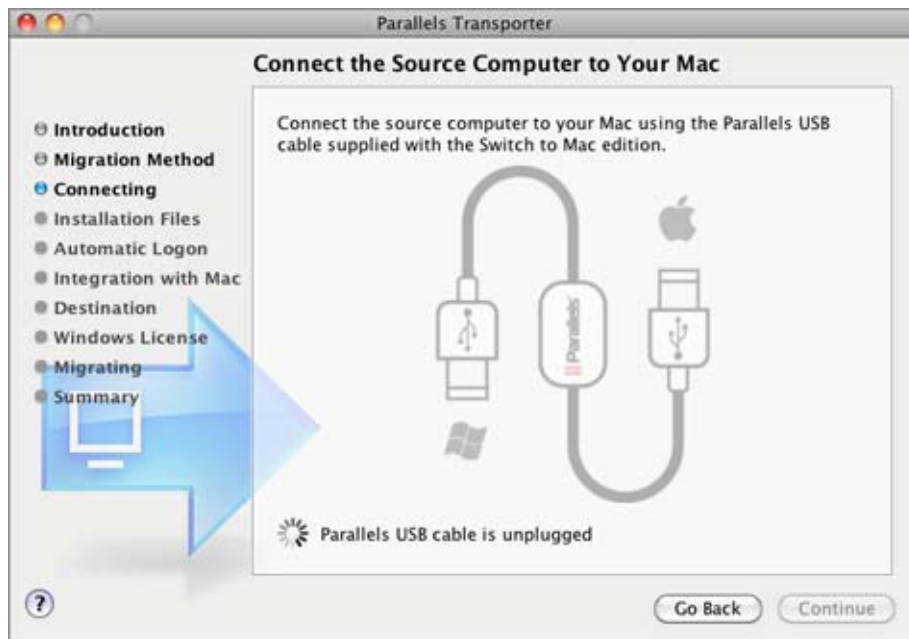
- 1 Turn on your Mac and the source computer, log in, and connect the computers with the Parallels USB cable.
- 2 On the source Windows computer, start Parallels Transporter Agent by selecting **Start > Program Files > Parallels > Parallels Transporter Agent**.

The Parallels Transporter Agent window will appear.



Do not close this window until the migration is finished.

- 3 On your Mac, start Parallels Desktop and choose **Import** from the **File** menu to start Parallels Transporter.
- 4 In the **Welcome to Parallels Transporter** window, select **Parallels Transporter Agent is open on the source PC** and click **Continue**.
- 5 In the **Migration Method** window, select the **Parallels USB cable** option and click **Continue**.
- 6 If the Parallels USB cable is plugged in, in the **Connect the Source Computer to Your Mac** window, you will see the **Ready to connect** status. Click **Continue**. Parallels Transporter will connect to Parallels Transporter Agent and collect information about the source computer.



- 7 In the Automatic Logon window, you can enable the automatic logon. If you enable it now, you will not have to provide your user account password each time you start the virtual machine.

If you do not want to enable automatic logon, select **Do not enable Automatic Login**. When finished, click **Continue**.

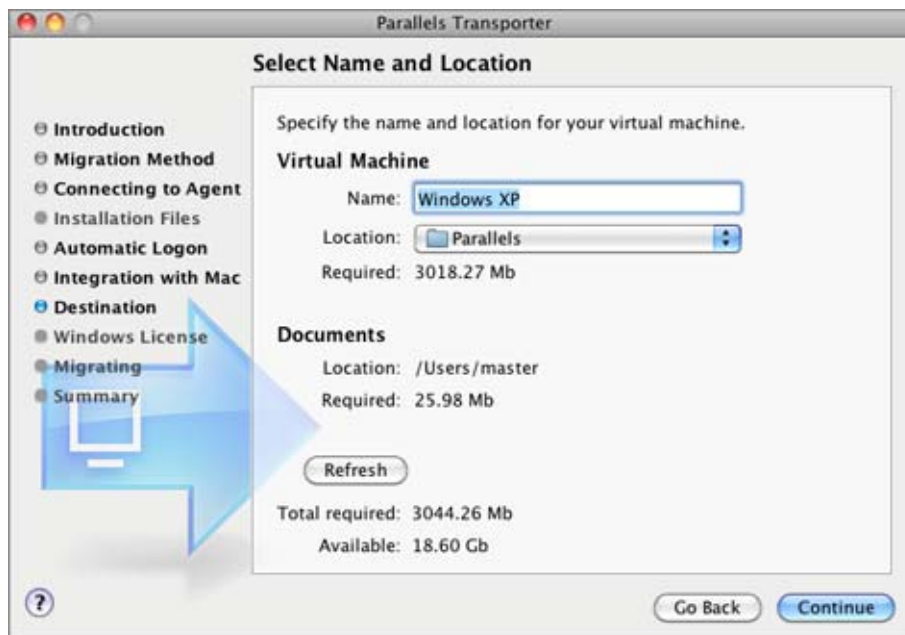
- 8 In the next step, choose the level of integration between your Windows and Mac applications and files. You can choose one of the following ways to work with your Windows applications:

- **Like a Mac:** If you select this option, the files located on the desktop, as well as the contents of the documents, pictures, music, videos, and downloads folders of the current user will be copied from the Windows physical computer to the corresponding locations on your Mac. In addition, all of the bookmarks on the Windows physical computer Internet browser(s) will be added to the default Internet browser on your Mac.
- **Like a PC:** If you select this option, your Windows will run in a separate window, and your Mac files will not be shared with Windows, but you will be able to drag and drop files between the systems, as well as copy text.



When finished, click Continue.

- 9 In the Select Name and Location window, specify the resulting virtual machine or hard disk name and location on the host computer. When ready, click Continue.



- 10 If you are migrating a Windows source computer, in the next step, you will see the warning message concerning the Windows activation key. To proceed, read this message, select I want to continue and click Migrate.
- 11 After the migration is complete, click Done in the Migration was completed successfully window to quit Parallels Transporter. You can also close the Parallels Transporter Agent window on the source computer.

After quitting Parallels Transporter, you can start using your virtual machine. Open it in Parallels Desktop Switch to Mac and install Parallels Tools in it.

Note: To be able to install Parallels Tools on a Windows virtual machine, you should log in to its operating system as an administrator.

Using Network or FireWire

Warning: Product re-activation may be required in order to migrate some software applications.

When migrating over network, your source and host computers must be connected to the same network.

Note: If you are going to migrate a Windows computer, make sure that the Windows Firewall is turned off. You can turn it on after the migration is finished.

For migrating the Windows XP source computers, you can also use the FireWire connection. You can try to migrate a source computer with Linux or other Windows operating systems using FireWire, but it may require installing additional drivers or setting certain parameters. For migrating using FireWire, you should have the FireWire cable and FireWire ports in your source and target computers. The procedure for migrating using FireWire is the same as migrating over network.

Migrating From a Remote Computer Over Network

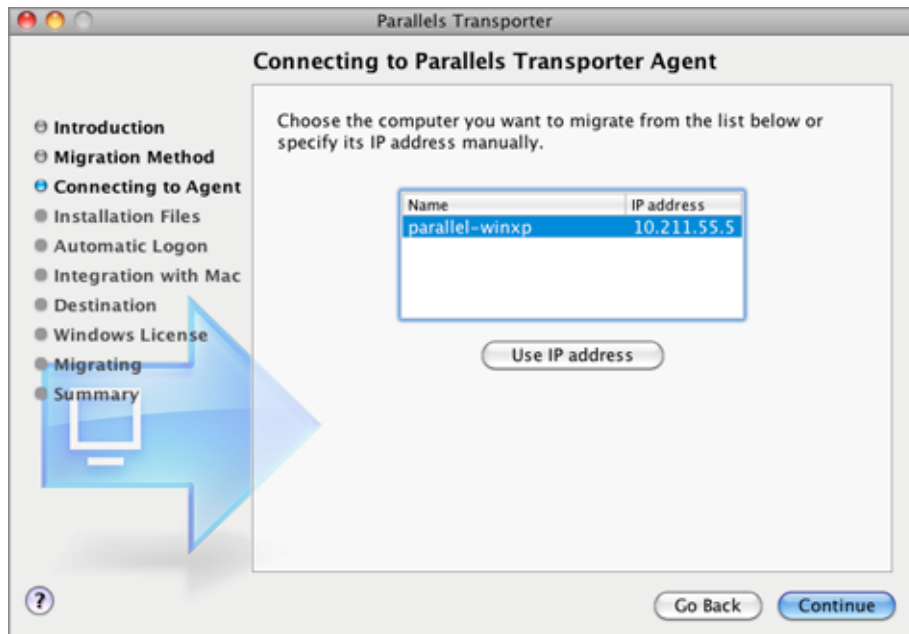
- 1 Turn on your Mac and the source computer. Make sure that the computers are connected over network.
- 2 Start Parallels Transporter Agent on the source computer:
 - In Windows, click the Windows Start menu and choose All Programs > Parallels > Parallels Transporter Agent.
 - In Linux, click the Applications menu and choose System Tools > Parallels Transporter Agent.

The Parallels Transporter Agent window will appear.



Do not close this window until the migration is finished.

- 3 On your Mac, choose **Import** from the Parallels Desktop Switch to Mac File menu to start Parallels Transporter.
- 4 In the **Introduction** window, select **Parallels Transporter Agent** is open on the source PC and click **Continue**.
- 5 In the **Migration Method** window, select the **Network** option and click **Continue**.
- 6 In the **Connecting to Parallels Transporter Agent** window, select your Windows computer name from the list of detected computers and click **Continue**.



- 7 Provide the source computer administrator credentials when prompted. Parallels Transporter will connect to Parallels Transporter Agent and collect information about the source computer.
- 8 In the **Automatic Logon** window, you can enable the automatic logon. If you enable it now, you will not have to provide your user account password each time when starting the virtual machine.

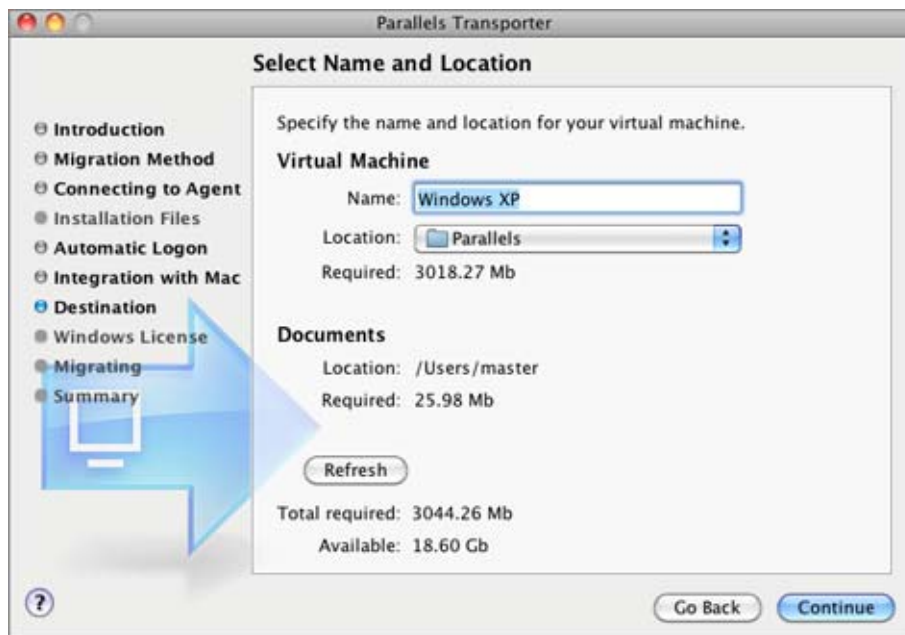
If you do not want to enable automatic logon, select **Do not enable Automatic Logon**. When finished, click **Continue**.

- 9 In the next step, choose the level of integration between your Windows and Mac applications and files. You can choose one of the following options of working with your Windows applications:
 - **Like a Mac:** If you select this option, the files located on the desktop, as well as the contents of the documents, pictures, music, videos, and downloads folders of the current user will be copied from the Windows physical computer to the corresponding locations on your Mac. In addition, all of the bookmarks on the Windows physical computer Internet browser(s) will be added to the default Internet browser on your Mac.
 - **Like a PC:** If you select this option, your Windows will run in a separate window, and your Mac files will not be shared with Windows, but you will be able to drag and drop files between the systems, as well as copy text.



When finished, click Continue.

- 10 In the Select Name and Location window, specify the resulting virtual machine or hard disk name and location on the host computer. When ready, click Continue.



- 11 If you are migrating a Windows source computer, in the next step, you will see the warning message concerning the Windows activation key. To proceed, read this message, select I want to continue and click Migrate.
- 12 After the migration is complete, click Done in the Migration was completed successfully window to quit Parallels Transporter. You can also close the Parallels Transporter Agent window on the source computer.

After quitting Parallels Transporter, you can start using your virtual machine. Open it in Parallels Desktop Switch to Mac and install Parallels Tools on it.

Note: To be able to install Parallels Tools on a Windows virtual machine, you should log in to its operating system as an administrator.

Using an External Storage Device

The migration process using an external storage device consists of three main stages:

- 1 Migrating the source computer data to a Parallels virtual machine with the help of Parallels Transporter Agent. The virtual machine is saved on a USB drive or another removable storage device connected to the source computer.
- 2 Disconnecting the storage device from the source computer and connecting it to the host computer (your Mac).
- 3 Migrating the resulting virtual machine to the host computer from the storage device with the help of Parallels Transporter.

Warning: Product re-activation may be required in order to migrate some software applications.

Migrating the Source Computer to the External Storage Device

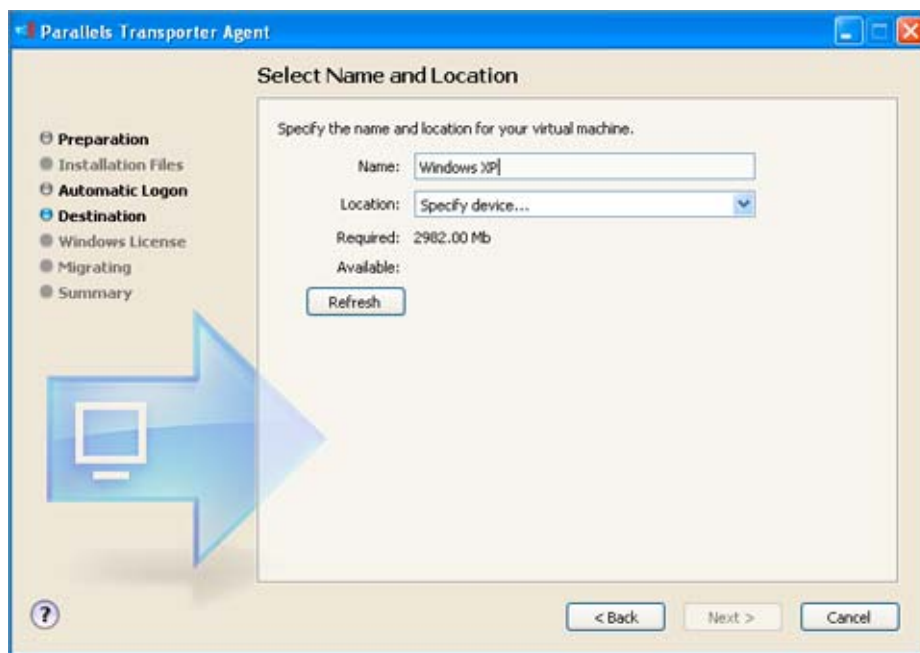
- 1 Connect an external storage device to your source computer.
- 2 Start Parallels Transporter Agent on the physical source physical computer:
 - In Windows, click the Windows Start menu and choose All Programs > Parallels > Parallels Transporter Agent.
 - In Linux, click the Applications menu and choose System Tools > Parallels Transporter Agent .
- 3 The Parallels Transporter Agent window will appear. Click the external storage device icon to start the Parallels Transporter Agent wizard.



- 4 In the **Connecting External Storage** window, click **Next**. Parallels Transporter Agent will collect information about the source computer.
- 5 In the **Automatic Login** window, you can provide your Windows account password (This is the password you use to enter your desktop on a regular basis). If you provide the password now, you will not have to provide it each time you start the Windows virtual machine.

If you want to provide your Windows account password now, type it in the **Password** field. If you do not want to enable automatic logon, select **Do not enable Automatic Logon**. When finished, click **Next**.

- 6 In the **Select Name and Location** window, specify the virtual machine name and location on the storage device. You can specify any location on your source computer. After Parallels Transporter finishes the migration to the specified location, you will have to transfer the virtual machine .pvm file using an external storage device, or CD/DVD disc, or via the Internet to your Mac. When ready, click **Next**.



- 7 In the next step, you will see the warning message concerning the Windows activation key. To proceed, read this message, select **I want to continue**, and click **Migrate**.
- 8 After the migration is complete, click **Finish** to quit Parallels Transporter Agent.
- 9 Disconnect the storage device from the source computer, and connect it to your Mac.

Migrating the Virtual Machine to Your Mac

- 1 On your Mac, choose **Import** from the Parallels Desktop Switch to Mac File menu to start Parallels Transporter.
- 2 In the **Introduction** window, select **Parallels Transporter Agent is open on the source PC** and click **Continue**.
- 3 In the **Migration Method** window, select the **External storage device** option and click **Continue**.
- 4 In the **Preparing to Copy** window, you should provide the path to the resulting virtual machine on the storage device. Click the **Choose** button and locate the virtual machine's bundle (.pvm). Click **Continue**.



- 5 In the next step, choose the level of integration between your Windows and Mac applications and files. You can choose one of the following ways to work with your Windows applications:
 - **Like a Mac:** If you select this option, the files located on the desktop, as well as the contents of the documents, pictures, music, videos, and downloads folders of the current user will be copied from the Windows physical computer to the corresponding locations on your Mac. In addition, all of the bookmarks on the Windows physical computer Internet browser(s) will be added to the default Internet browser on your Mac.
 - **Like a PC:** If you select this option, your Windows will run in a separate window, and your Mac files will not be shared with Windows, but you will be able to drag and drop files between the systems, as well as copy text.



When finished, click **Continue**.

- 6 In the **Select Name and Location** window, specify the resulting virtual machine name and location on the host computer. When ready, click **Migrate**.
- 7 After the migration is complete, click **Finish** to exit the wizard.

After quitting Parallels Transporter, you can start using your virtual machine. Open it in Parallels Desktop Switch to Mac and install Parallels Tools in it.

Note: To be able to install Parallels Tools on a Windows virtual machine, you should log in to its operating system as an administrator.

CHAPTER 6

What's Next

Once your Windows computer is transferred to a Parallels virtual machine on your Mac, it is recommended that you install Parallels Tools which provide a seamless integration for your Mac and virtual machine enabling you to run Windows and Mac applications side by side.

This section outlines Parallels Tools installation as well as the basic operations, visual modes, and virtual machine configuration tips.

In This Chapter

Installing and Updating Parallels Tools	31
Working With the Virtual Machine	32
Changing View Modes.....	33
Configuring the Virtual Machine	34

Installing and Updating Parallels Tools

To install or update Parallels Tools:

- 1 Start the virtual machine and log in to the guest operating system.
- 2 Choose **Install Parallels Tools** (or **Update Parallels Tools**) from the **Virtual Machine** menu.

Note: If the **Install Parallels Tools** option is grayed out, make sure that Parallels Tools can be installed in your guest operating system. To see the list of guest OSs supported by Parallels Tools refer to the **Parallels Tools Overview** section in **Parallels Desktop Switch to Mac Help** available through the **Help** menu.

- 3 The Parallels Tools installation wizard will open.
- 4 In the **Welcome** window click **Install**. The wizard will start the automatic installation.
- 5 When the installation is complete click **Reboot** to exit the wizard and restart the virtual machine.

For more detailed procedures on installing Parallels Tools refer to the **Parallels Desktop Help** available from the **Help** menu.



Working With the Virtual Machine

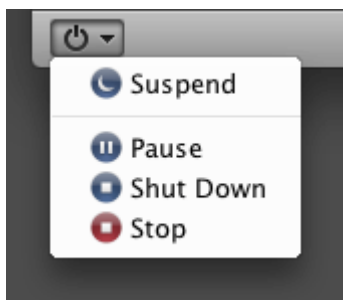
Opening the Virtual Machine

To open the virtual machine, start Parallels Desktop and click **Use your virtual machines** in the **Welcome** window. If you have only one virtual machine in Parallels Desktop, its window will open. If you have several virtual machines, you will see the **Parallels Virtual Machines** list. To open the virtual machine window, click its name on the list.

Later on you can open the **Parallels Virtual Machines** list by choosing **Virtual Machines List** from the **Window** menu.

Changing the Virtual Machine State

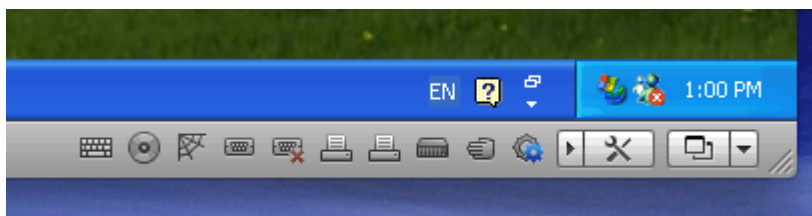
You can start, shut down, suspend, or otherwise manage the virtual machine state using the **Virtual Machine State** menu  in the lower left corner of the virtual machine window. Click the **Virtual Machine State** button  and select the desired command from the menu:



You can also use the **Parallels Virtual Machines** list and the **Virtual Machine** menu controls to start, stop, pause, suspend, resume, reset, or shut down the virtual machine.

Managing the Virtual Machine Devices

The status bar at the bottom of the virtual machine window displays the virtual machine's devices icons and the menus for managing the virtual machine view mode and state. You can easily connect or disconnect the devices using the devices icons on this bar: right-click the device icon and choose the necessary option from the shortcut menu.



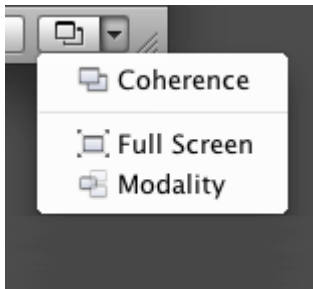
To add devices to the virtual machine configuration, use the **Virtual Machine Configuration** dialog (p. 34).

Changing View Modes

In a running virtual machine, you can switch between the following view modes:

- **Window mode.** In this mode, the virtual machine screen is displayed as a separate window. This is the default view mode.
- **Full Screen mode.** In this mode, the virtual machine screen is expanded to occupy the whole of your physical computer's screen.
- **Coherence mode.** In this mode, the virtual machine desktop is invisible so that you can see the virtual machine applications windows in Mac OS X and work with them side by side with your Mac OS X applications.
- **Modality mode.** In this mode, you can view the virtual machine and the programs running inside it in a transparent scaled window while working in Mac OS X. By default, this window appears on the top of all open windows, so you can supervise your virtual machine while you work in Mac OS X.

To change view modes, use the View Mode menu in the lower right hand corner of the virtual machine window.



Note: You can change the virtual machine view mode only when the virtual machine is running.

Configuring the Virtual Machine

The configuration of an existing virtual machine can be changed in the **Virtual Machine Configuration** dialog. You can open this dialog by doing one of the following:

- Choose **Configure** from the **Virtual Machine** menu.
- In the **Parallels Virtual Machines** list, right-click the virtual machine and choose **Configure**.



Virtual Machine Configuration allows you to configure your virtual machine in a variety of ways. For example, you can


- Configure the virtual machine general options in the **General** window.
- Define the virtual machine boot options in the **Boot Order** pane of the **Hardware** window.
- Configure different parameters of the devices currently available inside the virtual machine: hard disk drives, CD/DVD-ROM drives, floppy disk drives, etc.
- Configure the resource values currently set for the virtual machine: main memory, video memory, CPU, etc.
- Add a new device to the virtual machine or remove an existing one.

Detailed information on all of the settings you can configure in the **Virtual Machine Configuration** dialog can be found in the *Parallels Desktop User's Guide*.

CHAPTER 7

Getting Help

Parallels Desktop provides several ways to access the necessary information:

- **Parallels Desktop Help.** Parallels Desktop Help contains extensive information about the product and its usage. To open Parallels Desktop Help, choose **Parallels Desktop Help** from the Parallels Desktop **Help** menu.
- **Context-sensitive help.** In most windows, you will find a help button  opening the corresponding help page.
- **Online documentation** (http://www.parallels.com/products/desktop/stm50_docs-en_US). This page provides PDF documentation for Parallels Desktop and Parallels Transporter. To open the online documentation page, choose **Online Documentation** from the Parallels Desktop **Help** menu.
- **Parallels website** (<http://www.parallels.com>). Explore the Support web page that includes product help files and the FAQ section.
- **Parallels Knowledge Base** (<http://kb.parallels.com/>). This online resource provides troubleshooting for problems that may occur when using Parallels Desktop and other Parallels products.

In This Chapter

Feedback 35

Feedback

If you spot a typo in this guide, or if you have an opinion about how to make this guide more helpful, you can share your comments and suggestions with us by completing the Documentation Feedback form on our website (<http://www.parallels.com/en/support/usersdoc/>).