



Parallels Desktop Switch to Mac Edition

Reviewer's Guide

Table of Contents

| | |
|--|----|
| Introduction | 3 |
| Why Switch-to-Mac? | 3 |
| Parallels Desktop Switch to Mac Edition..... | 3 |
| Features | 3 |
| Get Ready..... | 3 |
| Get Set | 6 |
| Switch! | 12 |
| Summary..... | 13 |
| Support Info..... | 13 |
| Contact Info | 13 |
| General company contact information:..... | 13 |
| Facts at a Glance | 14 |
| Where to Buy | 14 |
| Pricing..... | 14 |
| Bonus Software | 14 |
| Localized versions..... | 14 |

Introduction

Parallels, a worldwide leader in virtualization and automation software, has a long history in providing innovative Windows virtualization solutions for users of the Mac OS X platform. Founded in 1999, Parallels has been recognized by consumers and the industry as offering the best and most innovative solutions for Mac users. With over two million users worldwide, 30+ industry awards and the number one Mac utility download, Parallels is proud of its contribution to the Mac user community. When the Intel processing platform was introduced to the Mac line in 2006, Parallels developed and introduced *Parallels Desktop for Mac*, a full integration of Windows on the Mac that supports running Windows applications side-by-side with Mac programs with no rebooting of the Mac. The latest innovation from Parallels, Parallels Desktop **Switch to Mac** Edition, is the only offering of its kind on the market today. Designed specifically for “Switchers” – users moving from PC to Mac – Parallels Desktop **Switch to Mac** Edition is a complete solution that provides: software + hardware to move files and programs from a PC to a Mac; resources to help PC users learn how to operate the Mac; and Parallels Desktop for Mac, enabling users to run Windows seamlessly on the Mac.

PARALLELS DESKTOP SWITCH TO MAC EDITION

As more and more PC users become intrigued by, and then purchase a Mac, they have particular concerns. These “Switchers” want to insure they can easily and quickly learn how to efficiently operate the Mac, they want all their PC files and programs to be accessible and they don’t want any technical hassles when moving from the PC to the Mac. To address this issue, Parallels Switch to Mac has been designed as the easiest way to move to Mac. Parallels Desktop **Switch to Mac** makes moving as easy as **READY, SET, SWITCH!**

The most recent innovation by Parallels provides comprehensive technical and learning resources to support *Switchers*. It’s a solution that makes moving to the Mac fast, simple and seamless, regardless of the user’s technical ability. This complete solution includes everything Switchers need:

- **Get Ready** with **Learning Resources** designed to teach Mac OS X from a Switcher’s perspective.
- **Get Set** with a complete **Intelligent Moving** toolkit that makes moving their PC to the Mac as simple as “plug and click”.
- **Switch!** back and forth between Windows and Mac OS X with **Parallels Desktop for Mac**. The easiest and simplest way to run Windows-on-Mac, side-by-side without rebooting.

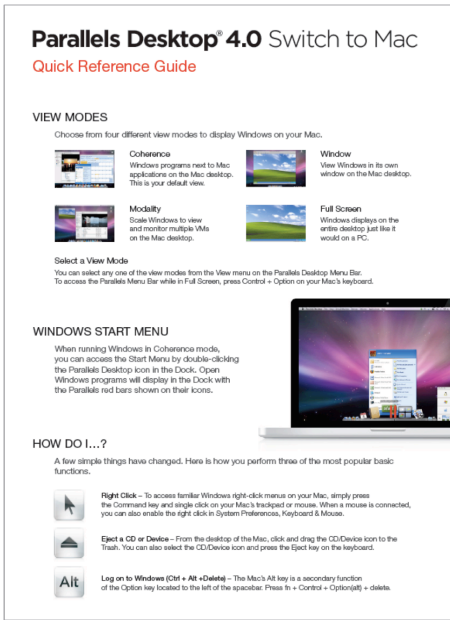
Features

Consistent with Parallels’ commitment to providing solutions driven by user needs, Parallels Desktop **Switch to Mac** Edition includes everything a new Mac user needs to get up and running on their new Mac quickly and efficiently, including intuitive and easy-to-use features that address less obvious, and sometimes unknown, stumbling-points experienced by *Switchers*.

Parallels Desktop **Switch to Mac** Edition includes the following features:

GET READY

Parallels Desktop **Switch to Mac** Learning Resources have been designed to address the challenges of working in both Windows and Mac environments. These tools, exclusive to the **Switch to Mac** Edition, enable users to configure the Parallels Desktop to match their unique computing needs. This customization feature helps make Parallels Desktop one of the easiest and most efficient ways for users to run Windows on a Mac. The Parallels Desktop **Switch to Mac** **READY** learning features include:



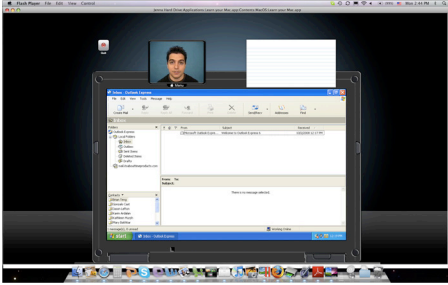
Quick Reference Guide – a handy card that features the most common Windows and Mac commands key/ hotkey differences and popular Parallels Desktop features. The handy tool is designed to keep key information at your fingertips.



Parallels Interactive Learning Tutorials: To run the tutorials, insert the Parallels **Switch to Mac** DVD in your Mac and click on **"Learn your Mac"**.



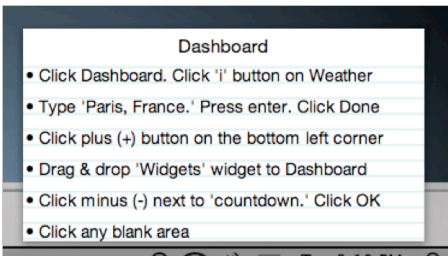
After watching the brief introduction, select lessons by clicking the desktop or dock icon of interest.



The first part of the lesson will demonstrate the comparable Windows feature.

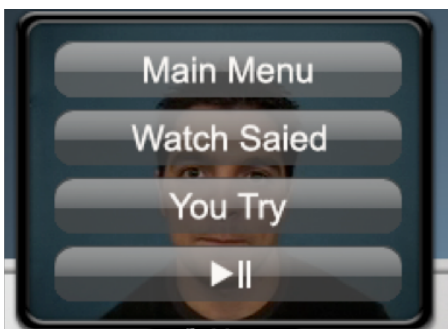


The lesson will then show you how to complete the same tasks on a Mac.



The note pad in the upper right area of the screen provides step-by-step instructions on how to complete the task.

When the video lesson is complete, you can try each step of the process yourself by following the directions in the note pad. You will progress through the lesson by correctly completing each step in the sequence.



You can return to the main menu and select a different lesson by clicking on the instructor and selecting main menu.

GET SET

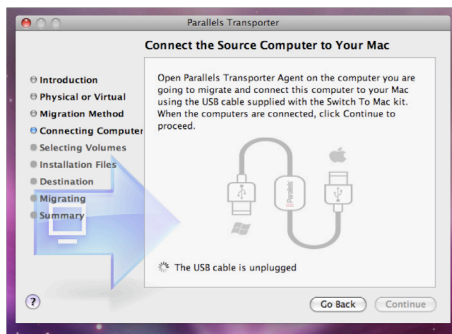
Intelligent Moving

The second step for most new Mac users is figuring out how to get all their files, media, photos and music from their old computer to their new computer. If the user has any applications that are exclusive to the Windows operating system, how can they bring the program, settings and all, over to the Mac? Before Parallels Desktop **Switch to Mac** Edition, options included using an external device to migrate data, media and files. Drag from the PC to the external device, then from the external device to the new machine. Configuring a network connection that usually requires advanced user knowledge and skill eliminates the middle step of an external device, but both processes have significant room for error. Files may become corrupted or may not transfer correctly or be compatible across the operating systems.

The process of bringing Windows-only programs to the Mac usually required a new, fresh install of Windows and the application, as well as reconfiguring all the settings and preferences. Parallels recognized the technical challenges and large margin for operator error in this process and devised a way that is truly as simple as plug and click to migrate an entire PC, operating system, applications, files and data to a new Mac. The **Switch to Mac** Intelligent Moving toolkit includes:



The **Parallels High-Speed USB Transfer Cable** is designed to work in conjunction with Parallels Transporter to move any Windows XP or Windows Vista PC to a new Mac. Supporting USB 2.0, the Parallels High-Speed USB Cable is the “plug” component of the “plug and click” process. The Parallels Transporter program will instruct you to connect your two machines with the cable and then walk you through the process to move your entire machine – operating system, applications and files including media, documents, music and photos - to a new virtual machine on your Mac.



The **Enhanced Parallels Transporter** is designed to make moving a Windows machine easier and faster using the Parallels High-Speed USB Cable. The Enhanced Parallels Transporter program includes the Parallels Transporter Agent for the PC, and a simple wizard-driven application that steps the user through the process. Through a few clicks – usually a straightforward sequence of accepting the default options – users are able to bring their existing Windows PC to their Mac. The result is instant access to applications, files, media, music and more on their Windows virtual machine.

Move Your PC with Parallels Transporter

The enhanced Parallels Transporter included in Parallels Desktop **Switch to Mac** lets you quickly and easily move your entire Windows PC, including programs, documents, photos and media, straight to your Mac.

The Parallels Transporter package includes two applications:

- Parallels Transporter – installed on your Mac, which is the host computer that will host your new Windows virtual machine.
- Parallels Transporter Agent – installed on your Windows PC, which is the source computer that contains your original Windows PC system.

While Parallels Transporter provides multiple options for migrating either a Windows or Linux PC system to your Mac, this tutorial provides step-by-step instructions on migrating an **entire existing Windows PC** using the **Parallels USB Transfer Cable**. For advanced migration options, system requirements and the complete list of supported guest operating systems, please refer to the *Parallels Transporter User's Guide* found at www.parallels.com/download/file/doc/Parallels_Transporter_User_Guide.pdf

Note: To use the Parallels USB Transfer Cable, you must be migrating either a **Windows Vista** or **Windows XP SP2** system from your PC to your Mac.

Preparing your Windows PC

In order to minimize technical difficulties and ensure your PC move is as seamless as possible, Parallels recommends users complete the following migration with in advance:

1. Run Check Disk on all drives to be moved

Through normal everyday use your PC's hard disk can develop bad sectors, lost clusters, and directory errors. These force your computer to work harder, making your PC seem slower than usual. Windows comes with a free built-in utility called Check Disk that will scan your hard disk, locate errors, and ask if you'd like to fix them.

You can run Check Disk directly from the Start menu:

- Click **Start**, click **My Computer**, and then right-click the local disk you want to check (usually, this is drive C).
- Click **Properties**, and then click **Tools**.
- Under Error-checking, click **Check Now...** Make sure both check boxes are selected, then click **Start**.
- Because Check Disk needs exclusive access to some Windows files, it will display a dialog box asking you whether you'd like to run Check Disk the next time you restart your PC. Click **Yes**.
- Click **Start**, then **Shut Down**.
- From the dropdown menu, select **Restart**, then click **OK**. Once your PC restarts, Check Disk will begin running.

Note: Depending on the version of Windows you have, once you've restarted your PC according to the directions above, you may not see your desktop and all the program icons you're accustomed to seeing

when you start up your computer. Instead, you'll see a blue screen as Check Disk begins checking your hard disk. It goes through five separate stages, allowing you to monitor its progress as it works. After it finishes all its tasks, it will automatically restart your computer, and you'll be able to use it again as you did before. Check Disk will take at least an hour—and likely longer—to run through its routine. More information on Check Disk can be found from Microsoft at <http://onecare.live.com/site/en-us/article/chkdiskhowto.htm>

2. Disable all scheduled tasks that might occur during the move

Whenever you are about to perform an important task on your computer, such as installing software, changing system configuration options, or performing any task that involves restarting the computer, you do not want a scheduled task to run. Scheduled tasks are generally used by advanced users or desktop administrators, not all machines have scheduled tasks.

If you have scheduled tasks, you can pause and restart them by modifying them. To modify a scheduled task, click **Start**, click **All Programs**, point to **Accessories**, point to **System Tools**, and then click **Scheduled Tasks**. The **Scheduled Tasks** window opens so that you can modify the settings. To pause the task scheduler so that no tasks run until you want them to, click **Pause Task Scheduler** on the **Advanced** menu. To resume the schedules for all tasks, on the **Advanced** menu, click **Continue Task Scheduler**. Once the service is restarted, tasks will run at their previously scheduled times.

3. Disable all anti-virus and anti-malware programs before installing

Anti-virus and anti-malware software are used to detect activities that are common to viruses and malware. These activities such as writing entries into the Windows registry, adding “auto-start” entries that launch programs whenever you boot your computer or login starting, stopping or installing Windows services or deleting other files relating to the program being set up, typically older versions, are the same activities that a new software installation does. Anti-virus and anti-malware software are not 100% accurate at determining the difference between a valid software installation and a virus. The result, if not turned off, can be a failed installation, or an installation that appears successful, but doesn't work. It is for this reason we recommend you temporarily turn off all anti-virus, anti-malware and security software while you are moving your PC to your Mac with Parallels. To determine how to turn off these programs, check the Help files in the software.

A note about migrating OEM version of Windows

Due to the nature of OEM (Original Equipment Manufacturer) versions of Windows that may be tied to the original PC system, there may be files, drivers, configurations, programs and license agreements that are unique to the respective PC manufacturers. Moving a system with this type of operating system may pose some technical and licensing issues. Check with your PC manufacturer, Microsoft and review the OEM Windows Migration document on the Parallels website under Support before trying to complete this type of move.

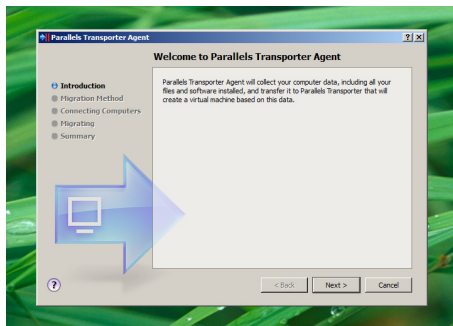
Installing Parallels Transporter Agent on Your Windows PC

You must have Administrator rights on your PC to install Parallels Transporter Agent.

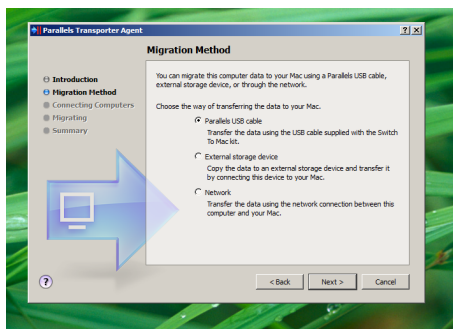
1. Insert your Parallels Switch to Mac DVD into your Windows PC.
2. Double-click the **Parallels Transporter Agent** to begin the installation.
3. The Parallels Transporter Agent wizard is launched and the Welcome window is displayed. Click **Next**.
4. Accept the License Agreement terms and click **Next**.
5. In the Destination Folder window, specify where you want Parallels Transporter Agent to be installed and click **Next**.
6. In the Ready to Install the Program window, click **Install**.
7. When the installation is complete, click **Finish** to exit the Wizard.

Preparing Transporter Agent on Your PC

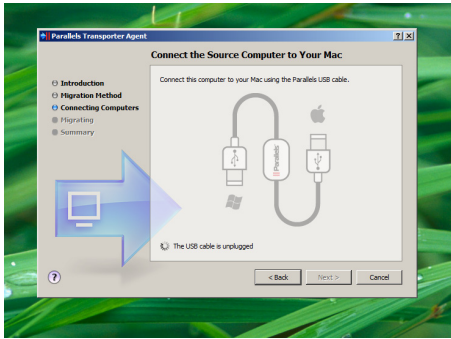
1. Start the Parallels Transporter Agent on your Windows PC. Open the **Windows Start Menu** and choose **All Programs > Parallels > Parallels Transporter Agent**.



2. In the **Introduction** window, click **Next**.



3. In the **Migration Method** window, select **Parallels USB Cable** and click **Next**.

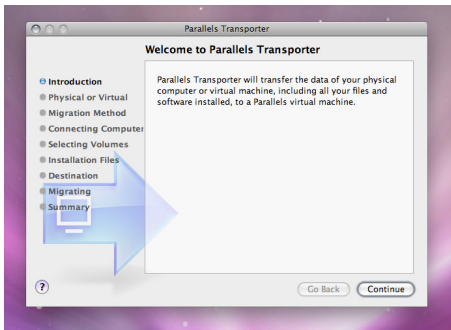


4. Connect the Parallels USB Transfer Cable to your PC. When the **Connect the Source Computer to Your Mac** window displays, the Parallels Transporter Agent on your PC is ready to connect to Parallels Transporter on your Mac. Do not close this window.

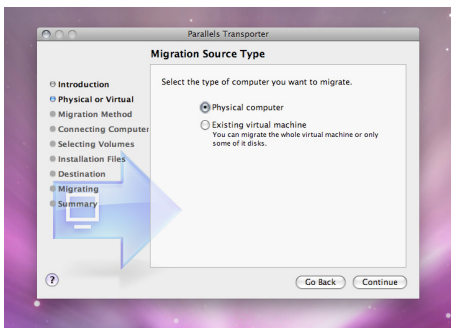
Preparing Transporter on Your Mac



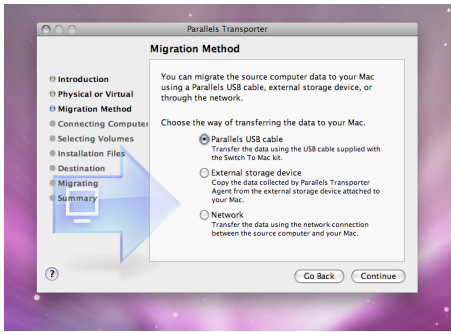
1. Launch Parallels Desktop. On the welcome screen, click **Migrate Windows from PC**.



2. The **Introduction** window will display. Click **Continue**.

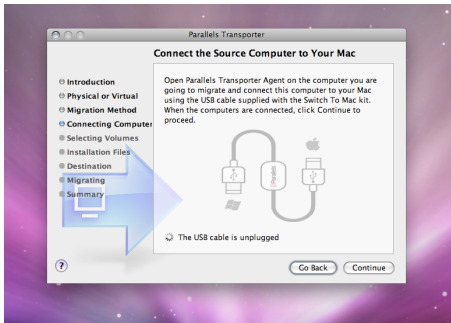


3. The **Migration Source Type** window will display. Select **Physical computer** and click **Continue**.



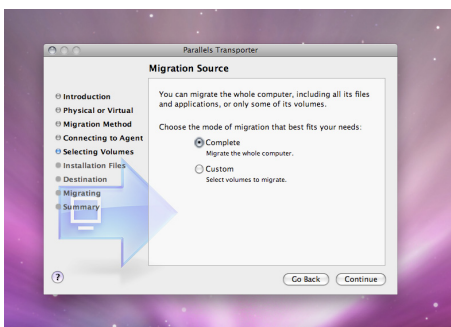
4. The **Migration Method** window will display. Select **Parallels USB Cable** and click **Continue**.

5. The **Connect the Source Computer to Your Mac** window will display. Connect the **Parallels USB Cable** to your Mac. Then, click **Continue**.



6. Parallels Transporter on your Mac will connect to Parallels Transporter Agent on your PC.

Moving Windows to Your Mac



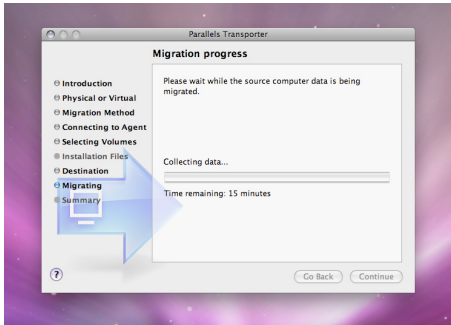
1. When Parallels Transporter successfully connects to the Parallels Transporter Agent, the **Migration Source** window will display. Select **Complete** and click **Continue**.

To customize the Windows migration, please refer to the Parallels Transporter User's Guide: www.parallels.com/download/file/doc/Parallels_Transporter_User_Guide.pdf

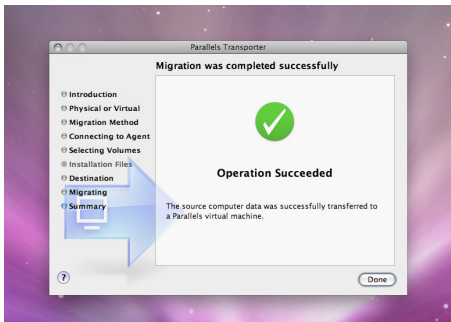
2. Parallels Transporter then reads and prepares the Windows system files so that they can run in a virtual machine on your Mac. If Parallels Transporter cannot find the necessary system files, the Windows Installation Files window will display. You will have two options:

- Insert the Windows installation disc into your Mac's CD/DVD drive.
- Or, navigate to an image of the Windows installation disc.

3. Once Parallels Transporter has access to the necessary system files, it will finish preparing your Windows system to run on your Mac and the **Select Name and Location** window will display. Name your new Windows virtual machine and choose the location on your Mac where you want it to be stored. Click **Migrate**.



4. Parallels Transporter will migrate your entire Windows system to a new virtual machine on your Mac. The length of time that this process requires depends on the size of your existing Windows PC system.



5. **The Migration was completed successfully** window will display on your Mac when the migration process is complete. On both your Mac and your PC, click **Done** to quit Parallels Transporter and Parallels Transporter Agent.

Congratulations! You have now successfully moved your entire Windows PC to a new virtual machine on your Mac. You can now begin using Parallels Desktop to run your must-have Windows programs side-by-side with your new Mac applications.

SWITCH!

Run Windows on your Mac

The ability to easily and seamlessly run Windows on a Mac is the feature most valued by multi-platform users. With Parallels Desktop for Mac, users do not have to choose between the two Windows and Mac platforms. PC users who are switching to a Mac are able to run their familiar Windows-based programs, as well as the Mac programs and interface. The virtualization technology and seamless integration of Parallels Desktop for Mac means that new and experienced Mac users get the best of both worlds – switching back and forth between Windows applications quickly and seamlessly without rebooting.

For a detailed guide to review Parallels Desktop 4.0 for Mac, please visit:
http://www.parallels.com/review/pd40_parallels/

Username: review

Password: pd40_parallels

Summary

Even though Mac was built to be intuitive and user-friendly, those who've spent part of their life "as a PC" still have to learn the differences. It's the little things, like using Finder instead of the Start Menu, or accessing the right-click option when there's only one button. Parallels Desktop **Switch to Mac** Edition takes the hassle out of learning the new Mac system. More than two hours of user-directed video tutorials equip users with easy to understand, step-by-step instructions on all the Mac features. These interactive tutorial sessions provide a Mac expert at one's fingertips; ready to answer questions at any time. Once a user becomes proficient in operating the Mac, the next challenge is to move everything that's on their old PC to their Mac. With Parallels Desktop **Switch to Mac** Edition, users can just plug a cable into both machines and click through a simple wizard to complete the move. With their PC programs and files on their new Mac, users are ready for the fun of running both operating system – side-by-side. The award-winning Parallels Desktop for Mac is the easiest, fastest way to run Windows on a Mac. With Parallels Desktop for Mac, Windows is fully integrated into the Mac system, so applications, files and even external USB devices are accessed as if they were native to the Mac. No rebooting is required. With Parallels Desktop for Mac users truly get the best of both Windows and Mac.

SUPPORT INFO

For technical support or any questions regarding the product, please contact:
pdstm_support@parallels.com

CONTACT INFO

For additional information or supporting materials such as Boxshots and screenshots, please contact:

Kate Lannan

Public Relations Coordinator, Parallels
Office: +1 (425) 282-6416
Email: klannan@parallels.com

For a list of local PR contacts, please visit:
www.parallels.com/contacts/media/

GENERAL COMPANY CONTACT INFORMATION:

Parallels
660 SW 39th Ave, Suite 250
Renton, WA 98057
info@parallels.com
Main: +1 425 282 6400
Fax: +1 425 282 6444
Pdstm@parallels.com

Facts at a Glance

WHERE TO BUY

Parallels Desktop **Switch to Mac** Edition is available at the Apple store and through authorized retail partners. For a complete list of locations, please visit:

<http://www.parallels.com/products/desktop/stm/how-to-buy/>

PRICING

The standard retail price (SRP) of Parallels Desktop **Switch to Mac** Edition is \$99.99.

BONUS SOFTWARE

Parallels Desktop **Switch to Mac** Edition includes \$175 of free software designed to protect Windows from external threats. This includes Parallels Internet Security powered by Kaspersky (\$79.99 Bonus Value), offering anti-virus, firewall, scanner, identity protection and more. Acronis True Image Home (\$49.99 Bonus Value) adds backup/restore capabilities and Acronis Disk Director Suite (\$49.99 Bonus Value) helps manage virtual machines giving better performance and data protection.

LOCALIZED VERSIONS

Parallels Desktop 4.0 for Mac is available in English, French and German.

For pricing and availability information for Europe, please contact the local PR representative, details on page www.parallels.com/contacts/media/.