



Parallels Remote Application Server

Parallels Client for Windows User's Guide

v16.2

Parallels International GmbH
Vordergasse 59
8200 Schaffhausen
Switzerland
Tel: + 41 52 672 20 30
www.parallels.com

Copyright © 1999-2017 Parallels International GmbH. All rights reserved.

This product is protected by United States and international copyright laws. The product's underlying technology, patents, and trademarks are listed at <http://www.parallels.com/about/legal/>.

Microsoft, Windows, Windows Server, Windows Vista are registered trademarks of Microsoft Corporation.
Apple, Mac, the Mac logo, OS X, macOS, iPad, iPhone, iPod touch are trademarks of Apple Inc., registered in the US and other countries.

Linux is a registered trademark of Linus Torvalds.

All other marks and names mentioned herein may be trademarks of their respective owners.

Contents

Getting Started	5
System Requirements	5
Installing Parallels Client Using an Invitation Email.....	5
Installing Parallels Client Manually	8
Connecting to Parallels Remote Application Server	9
Advanced Parallels Client Installation	13
Using Parallels Client for Windows.....	16
Adding a New Connection.....	16
Configuring a RAS Connection	18
Connection.....	19
Display	22
Printing.....	23
Scanning	26
Local Resources.....	27
Experience	30
Network	31
Authentication	32
Advanced Settings	33
Configuring an RDP Connection	35
Connection.....	35
Display	37
Local Resources.....	38
Programs	41
Experience	42
Network	43
Authentication	44
Advanced Settings	45
Configuring Global Options.....	47
Using a RAS Connection	50
Launching Published Resources.....	51
Working with Remote Applications	52

Contents

Managing Shortcuts	52
Managing Sessions	53
Changing Domain Password	55
Using an RDP Connection	55
Exporting and Importing Parallels Client Settings.....	56
Parallels Client Command Line Parameters	56
Index	58

CHAPTER 1

Getting Started

Parallels Client for Windows is an app that allows you to connect to Parallels Remote Application Server from a Windows computer.

In This Chapter

System Requirements	5
Installing Parallels Client Using an Invitation Email.....	5
Installing Parallels Client Manually	8

System Requirements

Parallels Client for Windows has the following software and hardware requirements:

- Windows XP SP3, Vista, Windows 7, Windows 8, Windows 10.
- The same hardware requirements as specified by Microsoft for the above versions of Windows.
- Some features (high color graphics, sound, etc.) will only be available if your Windows computer has the appropriate hardware installed and is properly configured.

Installing Parallels Client Using an Invitation Email

Your Parallels RAS administrator will send you an invitation email with the instructions on how to install Parallels Client for Windows and configure a Parallels RAS connection. The invitation email will contain the following information and action links:

- A message from your system administrator.
- A link to download Parallels Client for Windows (links to Parallels Client for other platforms may also be included if you are using other devices in addition to a Windows computer).
- A link to automatically configure Parallels Client on your computer, so you can connect to the Parallels Remote Application Server.
- Parallels Remote Application Server connection properties. You can use this information to manually create a Parallels Remote Application Server connection. The automatic configuration via the link (see above) is the preferred and the easiest method, but you can use this information to create a connection manually if needed for any reason.

Install Parallels Client for Windows

To install Parallels Client for Windows using an invitation email:

- 1** Make sure you are logged into your computer as a user with administrative privileges.
- 2** In the invitation email, click the Windows thumbnail to download Parallels Client for Windows installer.
- 3** When the download is complete, go to your download folder and run the `ClientDownloader.exe` file that you just downloaded. This is actually a small utility that detects the version of Windows that you are running and then downloads the appropriate Parallels Client for Windows installer.
- 4** When the download is complete, the Parallels Client installation wizard will automatically start.
- 5** On the **Welcome** page of the installation wizard, click **Next**.
- 6** Accept the License Agreement and click **Next**.
- 7** Select the folder where you want to install Parallels Client and click **Next**.
- 8** The **SSO Installation** page will be skipped when installing Parallels Client on a Windows Server operating system. On all other supported versions of Windows, it will be shown. Use the page to specify whether you want to install the **Single Sign-On** component. The component will automatically use your credentials to connect to Parallels Remote Application Server. Please note that for the component to work, you will need to reboot your computer (or log off and then log on again) after the installation.
- 9** Click **Next**.
- 10** On the **Ready to Install** page, click **Install**.
- 11** Once the installation is complete, click **Finish** to close the wizard.

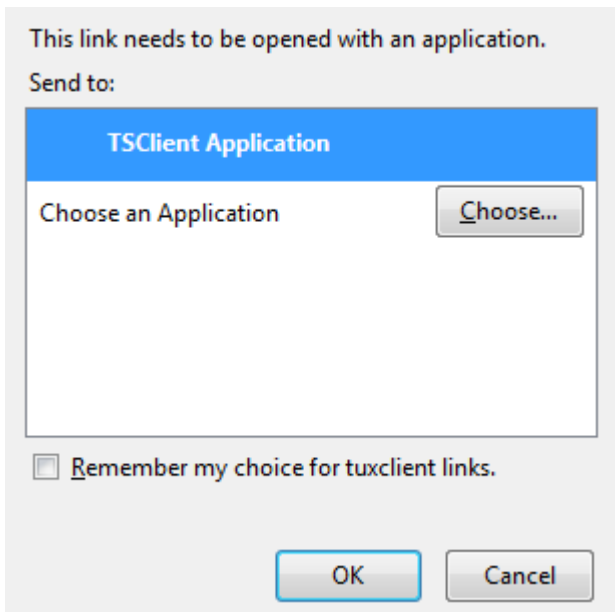
You now need to configure Parallels Client, so it can connect to Parallels Remote Application Server. The invitation email that you received from your system administrator includes a link that can accomplish this task automatically. Please follow the instructions below to configure Parallels Client.

Configure Parallels Client for Windows

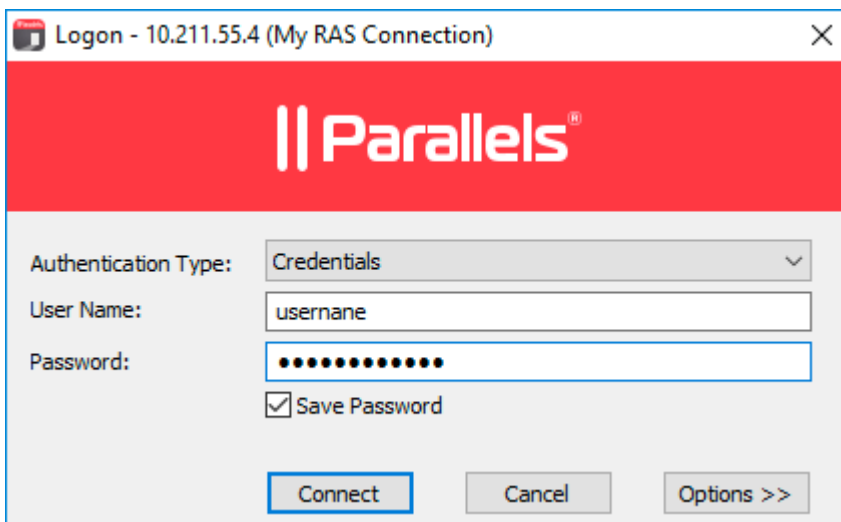
To configure Parallels Client:

- 1** In the invitation email, find the **Configure** section and click the **Click Here to auto configure the downloaded client** link.

- 2 The link will open in a web browser after which you should see the following dialog:



- 3 Make sure the **TSCient Application** item is selected and click **OK**. This will configure Parallels Client for Windows and then will display the **Logon** screen.

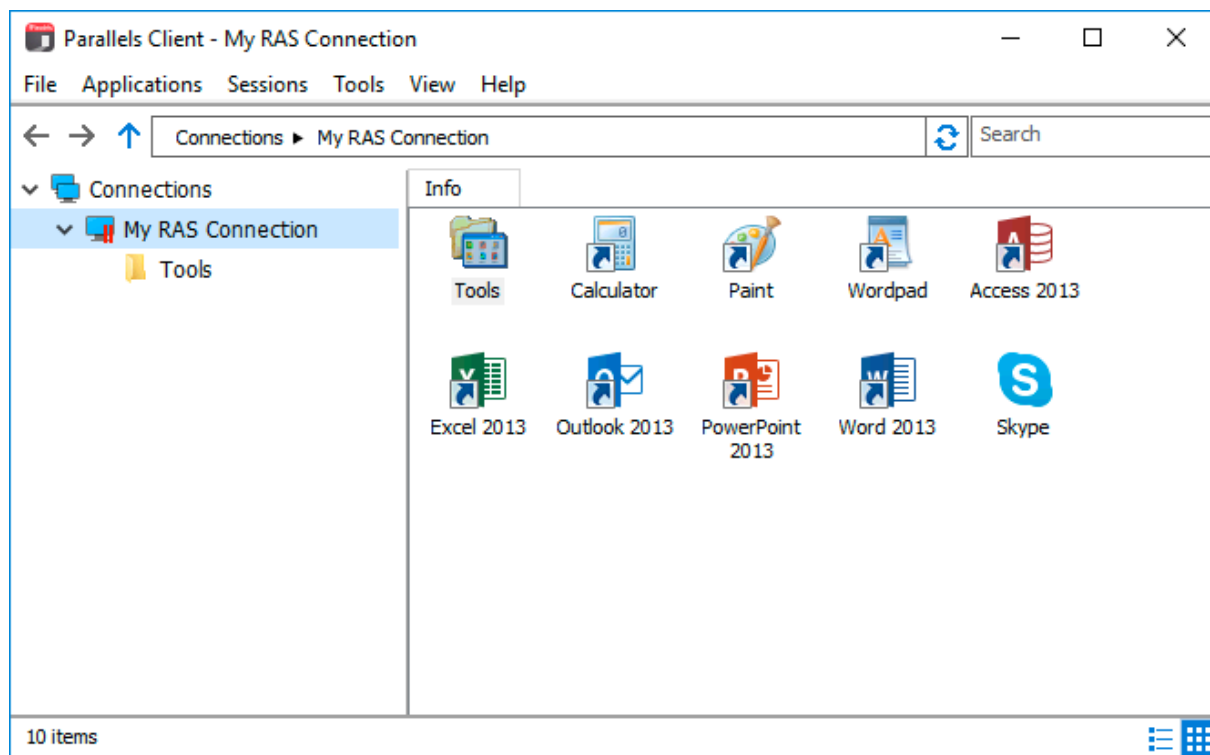


- 4 Select the **Authentication Type** from the following:
- **Credentials**. Select this option to connect to Parallels Remote Application Server by supplying your credentials, such as your domain user name and password.
 - **Smart card**. Select this option to connect to Parallels Remote Application Server using a smart card.
 - **Single Sign-On**. This option will be included in the list only if the Single Sign-On module is installed during Parallels Client installation. Select this option to use local system credentials to connect to the remote server.

Note for Administrators: The allowed authentication type(s) must be specified in the RAS Console in **Connection / Authentication**.

- 5 Depending on the authentication type selected, type your user name and password or insert a smart card into a reader. If using a smart card, enter a PIN when prompted.
- 6 Click **Connect**.

You should now see the main **Parallels Client** window. The left pane of the window displays the connection that was automatically configured for you. The right pane displays published resources that you can use.



Double-click a resource to open it. The resource will open in a separate window on your local computer as if it was a local application or a document (or a remote desktop if one is available as a published resource).

Installing Parallels Client Manually

The preferred method of downloading and installing Parallels Client for Windows is via an invitation email as described in the previous section. If you would like to download and run the installer manually, visit <https://www.parallels.com/products/ras/download/client>.

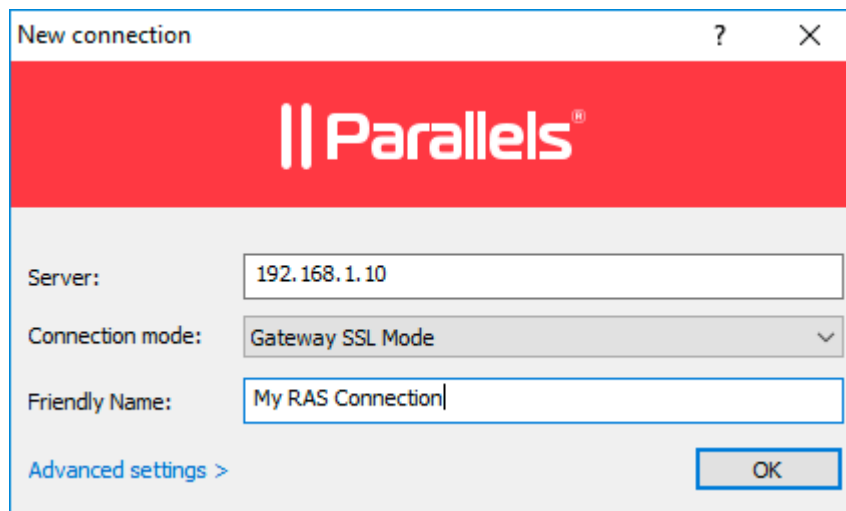
To install Parallels Client for Windows:

- 1 Make sure you are logged in to your computer as a user with administrative privileges.

- 2 Run the Parallels Client installer that you've downloaded from the Parallels website.
- 3 On the **Welcome** page of the installation wizard, click **Next**.
- 4 Accept the License Agreement and click **Next**.
- 5 Select the folder where you want to install Parallels Client and click **Next**.
- 6 The **SSO Installation** page will be skipped when installing Parallels Client on a Windows Server operating system. On all other supported versions of Windows, it will be shown. Use the page to specify whether you want to install the **Single Sign-On** component. The component will automatically use your credentials to connect to Parallels Remote Application Server. Please note that for the component to work, you will need to reboot your computer (or log off and then log on again) after the installation.
- 7 Click **Next**.
- 8 On the **Ready to Install** page, click **Install**.
- 9 When the installation is complete, click **Finish** to close the wizard and start Parallels Client for Windows.

Connecting to Parallels Remote Application Server

After you manually install Parallels Client and run it for the first time, you'll be asked if you would like to configure a new connection. Click **Yes**. This will open the **New connection** dialog.



Your system administrator should give you the connection information that must be specified in this dialog. If you received an invitation email from your administrator, you can find this information at the bottom of the message. The information will look similar to the following:

To manually configure the RAS Connection, use the following settings:

```
Server: 192.168.1.10
Port: 443
Connection Mode: Gateway SSL Mode
```

To specify the connection properties:

- 1** In the **Server** field, enter the Parallels Remote Application Server IP address or hostname (this should be the server where the RAS Secure Client Gateway resides).
- 2** In the **Connection mode** field, select one of the following options (note that you should use the mode that your system administrator has asked you to use):
 - **Direct Mode.** Parallels Client first connects to the RAS Secure Client Gateway for the best available terminal server and then connects directly to that server. This is best used when the Parallels Client and the terminal server reside on the same network.
 - **Direct SSL Mode.** Same as the direct mode above, but uses encryption to secure the data.
 - **Gateway Mode.** Parallels Client connects to the RAS Secure Client Gateway and the session connection is tunneled through the first available connection. This mode is ideal for servers that are only reachable via the gateway and do not require a high level of security.
 - **Gateway SSL Mode.** Same as the gateway mode above, but uses encryption to secure the data.
- 3** In the **Friendly name** field, choose and type a friendly name for this connection.
- 4** If your system administrator told you to specify the port number, do the following:
 - a** Click the **Advanced settings** link. The **Connection Properties** dialog opens (see the screenshot below).
 - b** Specify the port number in the **Port** field.
 - c** You can also review and modify other properties if you wish. More on these later in this guide.

- d The [...] button next to the **Primary Connection** field allows you to select a Parallels RAS server (this will only work if the **Broadcast RAS Secure Client Gateway Address** option has been enabled on the server side).

Connection Properties - My RAS Connection

Experience Network Authentication Advanced Settings
Connection Display Printing Scanning Local Resources

Connection Settings

Primary Connection: 192.168.1.10 ...

Connection Mode: Gateway SSL Mode

Port: 443

Secondary Connections...

Friendly Name: My RAS Connection

Logon

Auto Logon

Authentication Type: Credentials

Username:

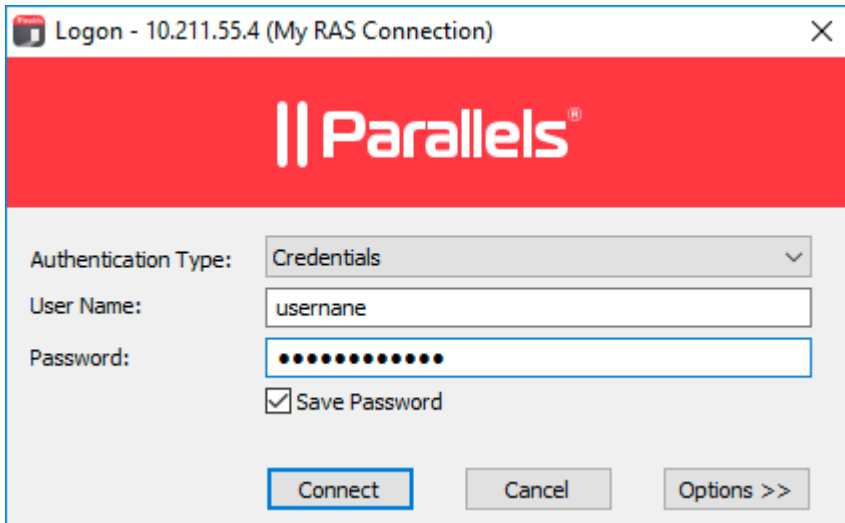
Password:

Save Password

Domain:

OK Cancel Help

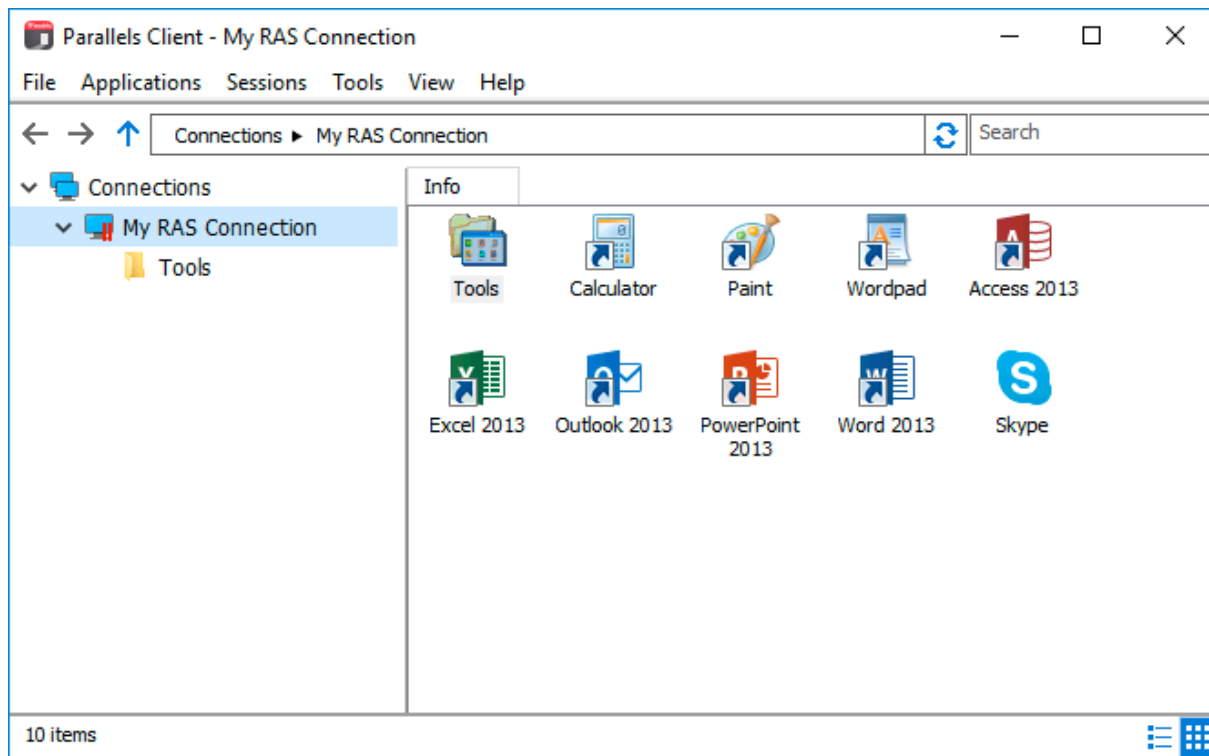
- 5 Click **OK**. The **Logon** dialog opens.



- 6 In the **Authentication type** drop-down list, select the desired method of authentication:
- **Credentials.** Select this option and then enter your username and password. You will be authenticated on the remote server using the specified credentials.
 - **Smart Card.** Select this option to authenticate using a smart card. When connecting to the remote server, insert a smart card into the card reader and then enter a PIN when prompted.
 - **Single Sign-On.** This option will be included in the list only if the Single Sign-On module is installed during Parallels Client installation. Select this option to use local system credentials to connect to the remote server

Note for Administrators: The allowed authentication type(s) must be specified in the RAS Console in Connection / Authentication.

- 7 Click **Connect**. If the connection is successful, you'll see the main **Parallels Client** window where your connection(s) and published resources are displayed.



Advanced Parallels Client Installation

Note: This section is intended for IT Administrators. If you are not an IT administrator in your organization, you may skip it.

The Parallels Client for Windows installer uses the MSI format. This enables you to deploy it remotely using Group Policies or any other deployment tool that can work with MSI installers.

There are two ways to modify the client installation settings:

- Modify the original file using Orca.exe.
- Run the installer from the command line: `msiexec.exe /i RASClient.msi` (or `RASClient-x64.msi` if using a 64 bit version)

Silent Install

To perform a silent install, run the following command:

```
msiexec.exe /qn /i RASClient.msi
```

In the command above, specify `RASClient-x64.msi` if using a 64 bit version of Parallels Client for Windows.

General Settings

When running an installation command specified above, you can pass the following properties to `msiexec.exe` using the `PROPERTY=VALUE` notation:

DEFSETTINGS: To use when Parallels Client installer reads `2xsetting.2xc` (the file containing all settings to be used by the client) as default settings.

DEFSETXML: To use when XML settings are entered manually.

OVERRIDEUSERSETTINGS: To override the user settings with client MSI settings.

- 0 – Client settings are not overridden
- 1 – Client settings are overridden with the new settings of the Client MSI setup.

DISABLEOPTIONS: To disable the **Options** button and hide the options to configure the client settings. This option can be applied to users without administrative rights.

- 0 – Options are enabled
- 1 – Options are disabled

DISABLEOPTIONSADMIN: To disable the **Options** button and hide the options to configure the client settings. This option can be applied to users with administrative rights.

DISABLESAVEPASSWORDADMIN: To disable the clients from saving the password even if they have administrative rights.

- 0 – Option to save password is enabled
- 1 – Option to save Password is disabled

DISABLESAVEPASSWORD: To disable the clients from saving the password. This option is ignored with users with administrative rights.

- 0 – Option to save password is enabled
- 1 – Option to save Password is disabled

TUXGINA: Exclude/Include SSO during a silent installation

- 0 – Install SSO
- 1 – Exclude SSO
- 2 – Prompt during installation [Default]

TUXGINASRV: Install SSO on both Client and Server

- 0 – Install SSO only on the Client

- 1 – Install SSO on both Client and Server

Using Active Directory

There are two different ways that you can deploy an application through Active Directory. You can either publish the application or you can assign the application.

You can publish applications to users only, but you can assign applications to either users or computers. The applications are deployed in different ways, depending on which method you decide to use.

Parallels recommends that administrators assign the applications to COMPUTERS. The main reason is that the application is actually installed the next time the computer reboots.

When assigning to users, the application is not installed until the user actually clicks on the icons created for the application.

To assign an application to certain computers, simply do the following in Active Directory:

- 1 Open the Group Policy Editor.
- 2 To assign an application to a computer, navigate through the group policy console to Computer Configuration / Software Settings / Software Installation. Right-click the Software Installation container and click **New > Package** in the context menu. Select the appropriate MSI file and click **Open**. You are now asked whether you want to publish or assign the application. Select **Assign** and click **OK**.

Please note that when doing a silent installation, the MSI can be deployed using the following syntax (for the 64 bit version, use `RASClient-x64.msi`):

```
msiexec /qn /i RASClient.msi
```

The following sample command installs Parallels Client using the `DISABLESAVEPASSWORD=0` option (enable the ability to save the password) while skipping the SSO installation:

```
msiexec /qn /i 2XClient.msi DISABLESAVEPASSWORD=0 TUXGINA=1
```

CHAPTER 2

Using Parallels Client for Windows

Read this chapter to learn how to set up Parallels RAS connections, configure preferences, and use Parallels Client to launch remote applications and desktops.

In This Chapter

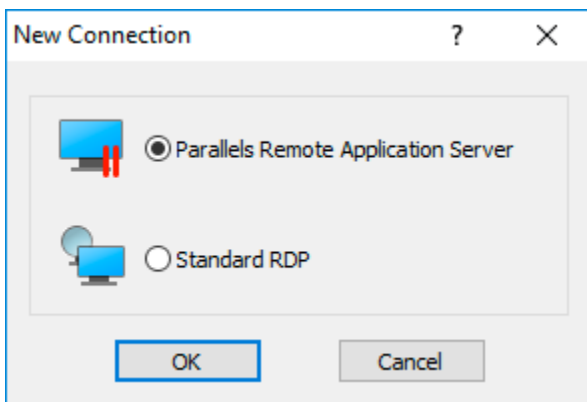
Adding a New Connection	16
Configuring a RAS Connection	18
Configuring an RDP Connection	35
Configuring Global Options	47
Using a RAS Connection	50
Using an RDP Connection	55
Exporting and Importing Parallels Client Settings	56
Parallels Client Command Line Parameters	56

Adding a New Connection

Parallels Client for Windows allows you to have more than one connection, so you could easily connect to different servers or using different connection properties, etc.

To add a connection:

- 1 Open Parallels Client by clicking **Start > All Apps > Parallels > Parallels Client** (or double-click the **Parallels Client** icon on your desktop).
- 2 In the main Parallels Client window, click the **File > New Connection** menu item. The **New Connection** dialog opens.



- 3 Specify a connection type that you want to create:
 - **Remote Application Server.** Create a Parallels Remote Application Server connection.
 - **Standard RDP.** Create a standard Remote Desktop connection. This option allows you to connect to a computer on your network that accepts standard Remote Desktop connections.
- 4 Click **OK**.
- 5 On the next dialog, specify connection properties:

When creating a Remote Application Server connection, your system administrator should give you the connection information that must be specified in this dialog. If you received an invitation email from your administrator, you can find this information at the bottom of the message. The information will look similar to the following:

To manually configure the RAS Connection, use the following settings:

```
Server: 192.168.1.10
Port: 443
Connection Mode: Gateway SSL Mode
```

When creating a Standard RDP connection, you need to know the IP address or hostname of the remote computer you want to connect to.

- 6 In the **Server** field, enter the Parallels Remote Application Server IP address or hostname (this should be the server where the RAS Secure Client Gateway resides). If creating a Standard RDP connection, specify the remote computer IP address or hostname.
- 7 The **Connection mode** drop-down list is enabled only when creating a Remote Application Server connection. Select one of the following options (note that you should use the mode that your system administrator has asked you to use):
 - **Direct Mode.** Parallels Client first connects to the RAS Secure Client Gateway for the best available terminal server and then connects directly to that server. This is best used when the Parallels Client and the terminal server reside on the same network.

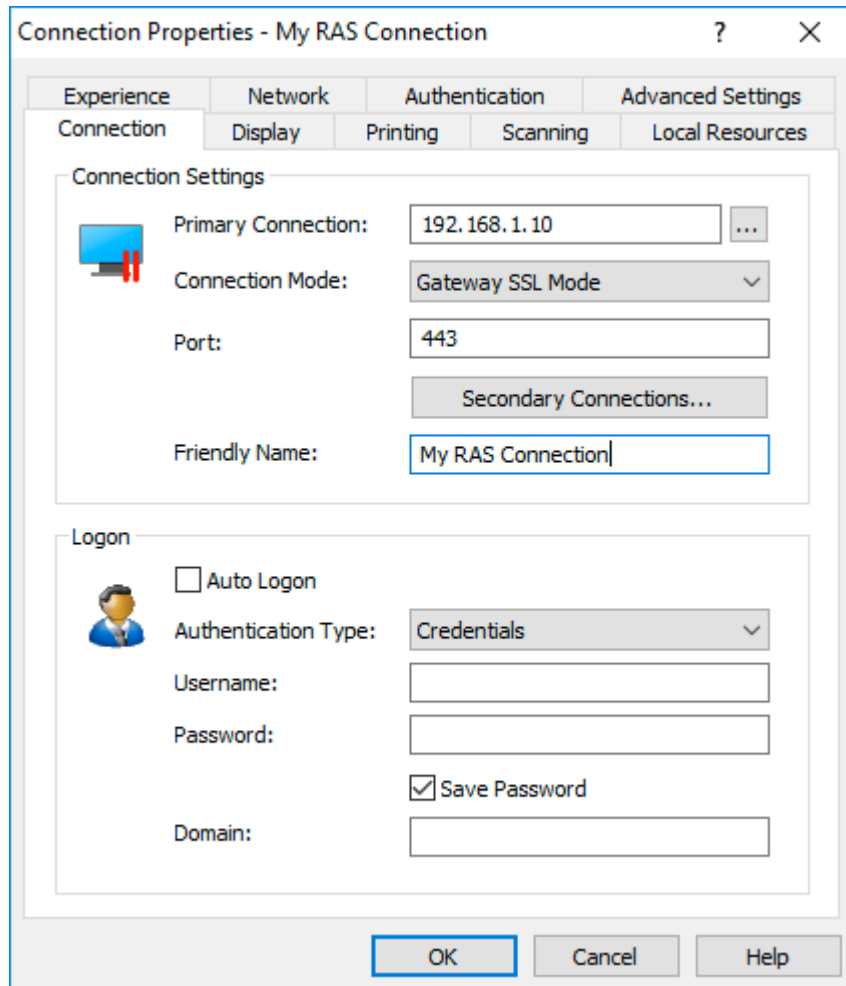
- **Direct SSL Mode.** Same as the direct mode above, but uses encryption to secure the data.
 - **Gateway Mode.** Parallels Client connects to the RAS Secure Client Gateway and the session connection is tunneled through the first available connection. This mode is ideal for servers that are only reachable via the gateway and do not require a high level of security.
 - **Gateway SSL Mode.** Same as the gateway mode above, but uses encryption to secure the data.
- 8** In the **Friendly name** field, choose and type a friendly name for this connection.
 - 9** The **Advanced settings** link opens the **Connection Properties** dialog where you can specify additional connection properties. For more information, please see **Configuring a RAS Connection** (p. 18) or **Configuring an RDP Connection** (p. 35).
 - 10** Click **OK** to create a connection.

Configuring a RAS Connection

To view and modify the properties of an existing Remote Application Server connection, right-click it in the main Parallels Client window and then click **Connection Properties** in the context menu. This will open the **Connection Properties** dialog. Properties are grouped in the dialog by functionality using tab pages. The following subsections describe each tab page in detail.

Connection

The **Connection** tab page allows you specify connection properties and logon information.



Configuring the Primary Connection

On the **Connection** tab page, you can define a primary connection and one or more secondary connections.

The primary connection is what Parallels Client will use first to connect to the specified server. This should be the server where the primary RAS Secure Client Gateway is running.

To specify the primary connection information:

- 1 In the **Primary Connection** field, specify the server name or IP address. You can click the [...] button and select a server from the list. If the server is not listed, it means that the system administrator disabled this functionality on the server side. In such a case, specify the server by typing its name or IP address in the **Primary Connection** field.

Note for Administrators: The **Broadcast RAS Secure Client Gateway Address** option must be enabled on the server side for the [...] button to display the server.

- 2 In the **Connection Mode** drop-down list, select one of the following options:
 - **Gateway Mode:** Parallels Client connects to the RAS Secure Client Gateway and the session connection is tunneled through the first available connection. This mode is ideal for servers which are only reachable via the gateway and do not require a high level of security.
 - **Gateway SSL Mode:** Same as the gateway mode above, but uses encryption to secure the data.
 - **Direct Mode:** Parallels Client first connects to the RAS Secure Client Gateway for the best available terminal server and then connects directly to that particular server. This is best used when the Parallels Client and the terminal server are on the same network.
 - **Direct SSL Mode:** Same as the direct mode above, but uses encryption to secure the data.
- 3 In the **Port** field, specify the port on which the gateway listens for incoming connections. If the default value has been modified on the server side, you have to replace the default value here as well. Otherwise, leave the default value intact.
- 4 In the **Friendly Name** field, choose and type a name of your choice, so you could easily identify the server in Parallels Client later.

Configuring a Secondary Connection

If the server you are connecting to has more than one RAS Secure Client Gateway, you can define a secondary connection, which will be used as a backup connection in case the primary connection fails.

To add a secondary connection:

- 1 Click the **Secondary Connections** button.
- 2 In the **Secondary Connections** dialog, click the **Add** button and specify a server name or IP address. This should be a server hosting a secondary RAS Secure Client Gateway (the primary gateway is used by the primary connection). You can click the [...] button and select a server from the list. If none are available (or if the desired server is not in the list), type the server info in the field provided.
- 3 Select the connection mode and modify the port number if necessary. Click **OK**.
- 4 Back in the **Secondary Connections** dialog, you can move connections up or down the list if you have more than one. If the primary connection cannot be established, Parallels Client will use secondary connections in the order listed.
- 5 Click **OK**.

Configuring the Logon Information

In the **Logon** section, specify the following properties:

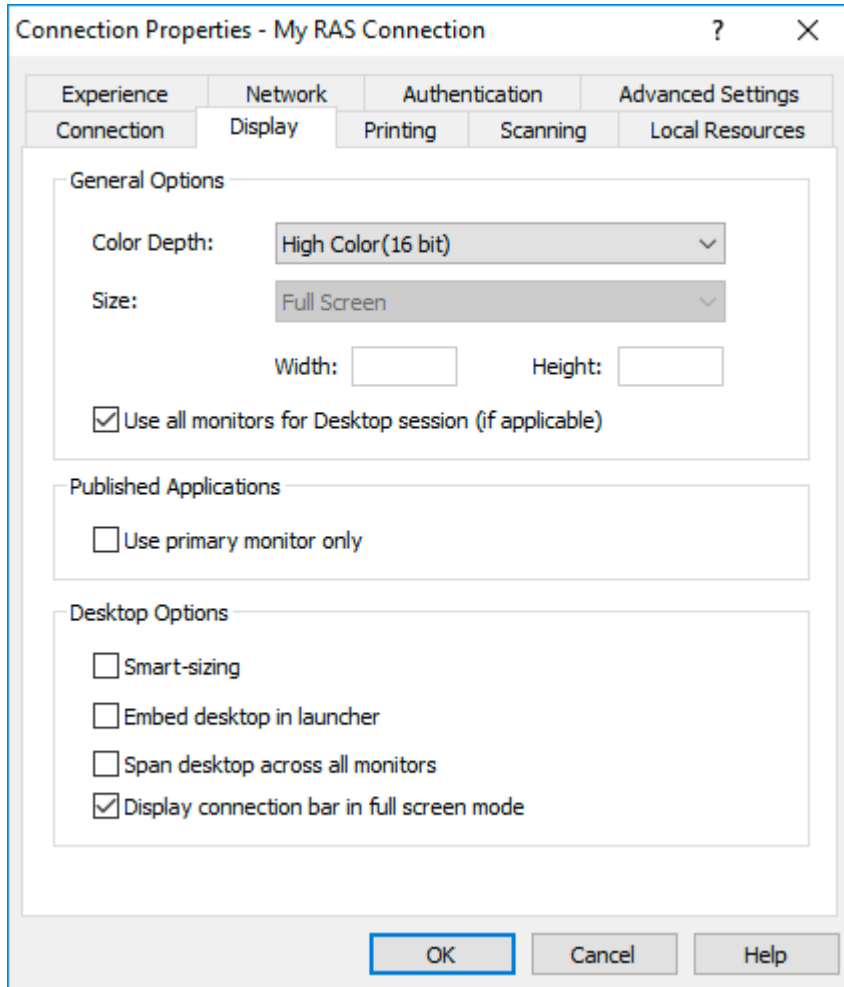
- 1** Select the **Auto Logon** option to enable Parallels Client to connect automatically (using this connection) on startup.
- 2** In the **Authentication type** drop-down list, select the desired method of authentication:
 - **Credentials:** Select this option and then enter the username, password, and domain information. You will be authenticated on the remote server using the specified credentials.
 - **Smart Card:** Select this option to authenticate using a smart card. When connecting to the remote server, insert a smart card into the card reader and then enter a PIN when prompted.
 - **Single Sign-On:** This option will be included in the list only if the Single Sign-On module is installed during Parallels Client installation. Select this option to use local system credentials to connect to the remote server.

Note for Administrators: The allowed authentication type(s) must be specified in the RAS Console in **Connection / Authentication**.

- 3** Specify your username, password, and the domain name. The **Save Password** option allows you to save your password, so you don't have to enter it every time you connect to the server.

Display

The **Display** tab page allows you to configure display options.



General Options

- **Color Depth:** Specify the desired color depth.
- **Size:** This option is available for standard RDP connections only.

Published Applications

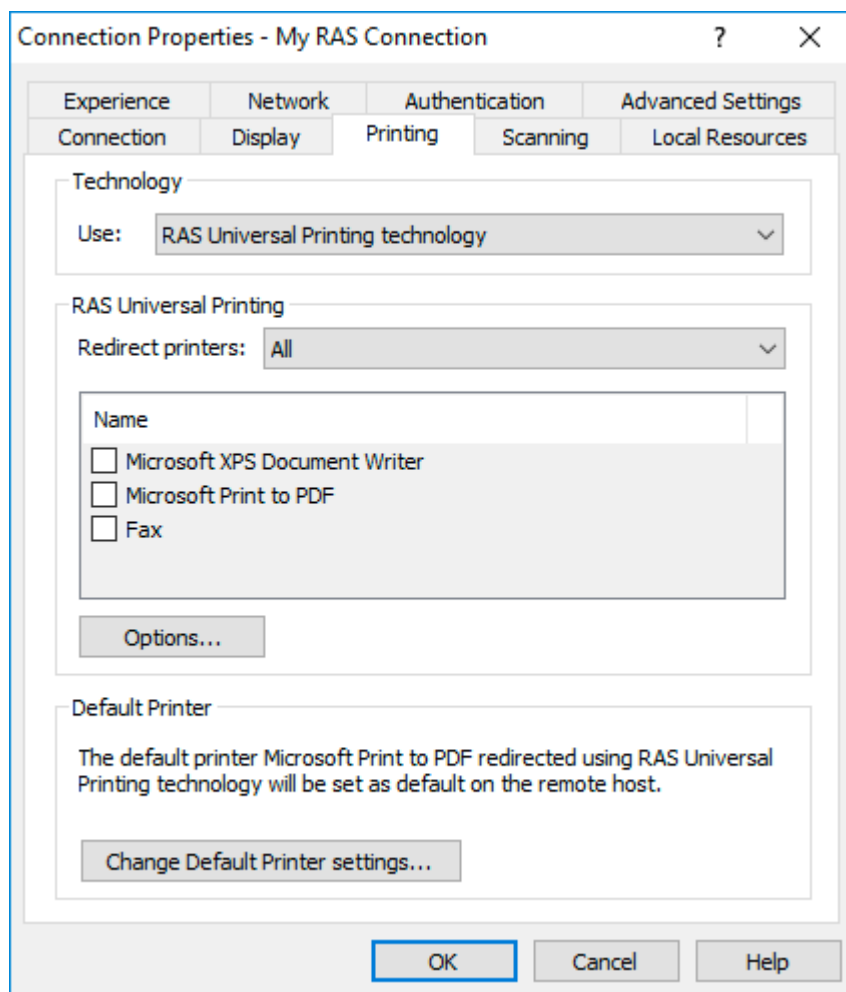
Use primary monitor only: Display a published resource on the primary monitor only. Other monitors connected to the computer will not be used.

Desktop Options

- **Smart-sizing.** Desktop smart sizing will scale a remote desktop to fit the connection window.
- **Embed desktop in launcher.** Enable this option to open a remote desktop inside the Parallels Client window (launcher).
- **Span desktop across all monitors.** Enable this option to span published desktops across all connected monitors.
- **Display connection bar in full screen mode.** Enable this option to show the connection bar when connecting in full screen mode.

Printing

The **Printing** tab page allows you to configure printing options.



In the **Technology** drop-down list, select the technology to use when redirecting printers to a remote computer:

- **None.** Don't redirect printers.
- **RAS Universal Printing technology.** Select this option if you want to use RAS Universal Printing technology.
- **Microsoft Basic Printing Redirection technology.** Select this option if you want to use Microsoft Basic printing technology.
- **RAS Universal Printing and Microsoft Basic redirection technologies.** Select this option to use both Parallels RAS and Microsoft technologies.

RAS Universal Printing

If you selected **RAS Universal Printing technology**, select printers to redirect in the **Redirect Printers** drop-down list:

- **All.** All printers on the client side will be redirected.
- **Default only.** Only the Windows default printer will be redirected.
- **Specific only.** Select the printers to redirect from the provided list. The list becomes enabled only if you select this option.

The **Options** button opens the **RAS Universal Printing Options** dialog where you can configure additional printing options as described below.

In the **Choose Format** drop-down list, select a data format for printing:

- **Print Portable Document Format (PDF).** Adobe PDF. This option does NOT require you to install any local applications capable of printing a PDF document. All the necessary libraries are already installed together with Parallels Client.
- **View PDF with external application.** To use this option you must have a local application installed which is capable of viewing a PDF document. Note that not all applications are supported. For example, the built-in PDF viewer in Windows is not supported, so you must have Adobe Acrobat Reader (or a similar application) installed.
- **Print PDF with external application.** This option works similar to the View PDF option above. It also requires an application capable of printing a PDF document installed locally.
- **Enhanced Meta File (EMF).** Use vector format and embedded fonts.
- **Bitmap (BMP).** Bitmap images.

In the **Client Printer Preferences** section, select one of the following:

- **Use server preferences for all printers.** If this option is selected, a generic printer preferences dialog will be shown when you click **Print** in a remote application. The dialog has only a minimal set of options that you can choose.

- **Use client preferences for all printers.** With this option selected, a local printer preferences dialog will open when you click **Print** in an application. The dialog will contain a full set of options for a particular printer that you have installed on your local computer. If you have more than one printer installed, a native preferences dialog will open for any particular printer that you choose to print to.
- **Use client preferences for the following printers.** You can use this option when you have more than one printer installed on your local computer. This option works similar to the **Use client preferences for all printers option** (above), but allows you to select which printers should use it. If a printer is not selected, it will use the generic printer preferences dialog, similar to the first option in this list.

Default printer settings

To configure default printer settings, click the **Change Default Printer settings** button.

The default printer list shows printers that can be redirected. The list also includes the printing technology which the available printers will use. The technology reflects the setting selected in the **Technology** section. For example, if the technology was set to **RAS Universal Printing technology**, only the printers using RAS Universal Printing will be listed.

To disable the default printer, select **<none>**. To redirect the default local printer on the client side to the remote computer, select **<defaultlocalprinter>**. When **<custom printer>** is selected, you can specify a custom printer which might be installed on the remote computer. The first printer that matches the printer name inserted in the custom text box, will be set as the default printer on the remote computer.

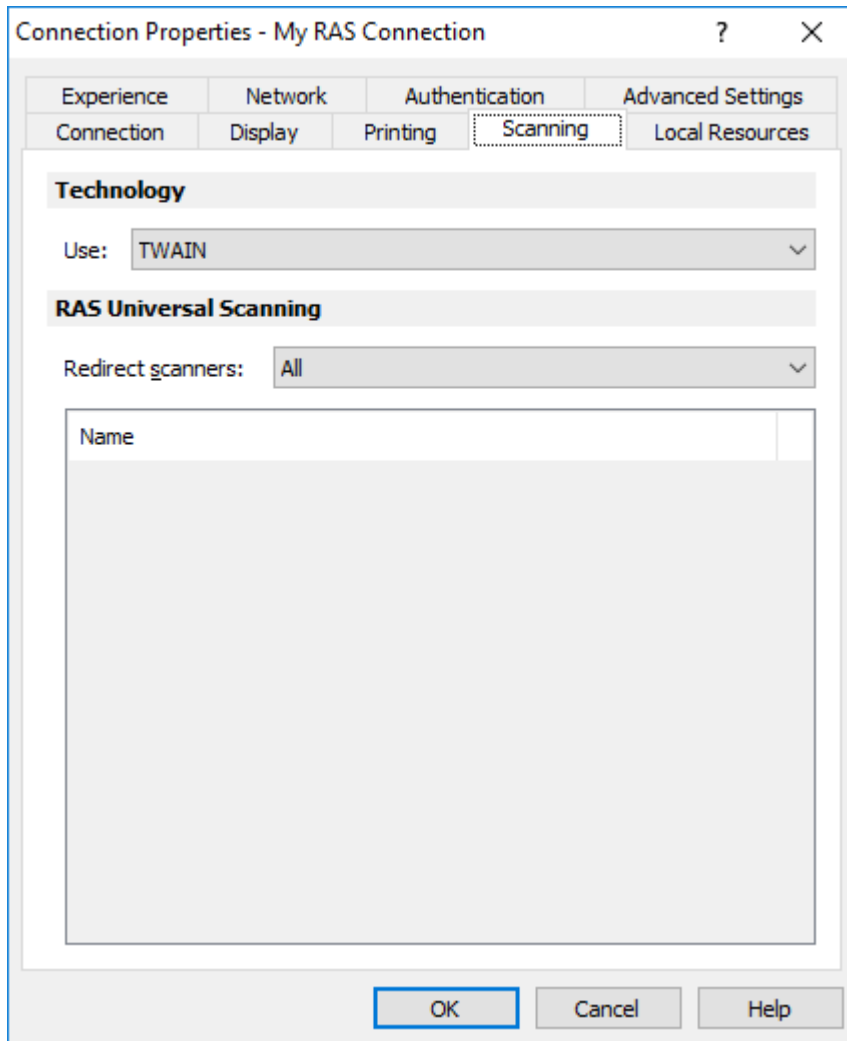
Select **Match exact printer name** to match the name exactly as inserted in the custom text box. Please note that the remote printer name may be different than the original printer name. Also note that local printers may not redirect due to server settings or policies.

You can specify the time a printer will be forced as default. If the default printer is changed during this time after the connection is established, the printer is reset as default.

Select the **Update the remote default printer if the local default printer is changed** option to change the remote default printer automatically when the local default printer is changed. Please note that the new printer must have been previously redirected.

Scanning

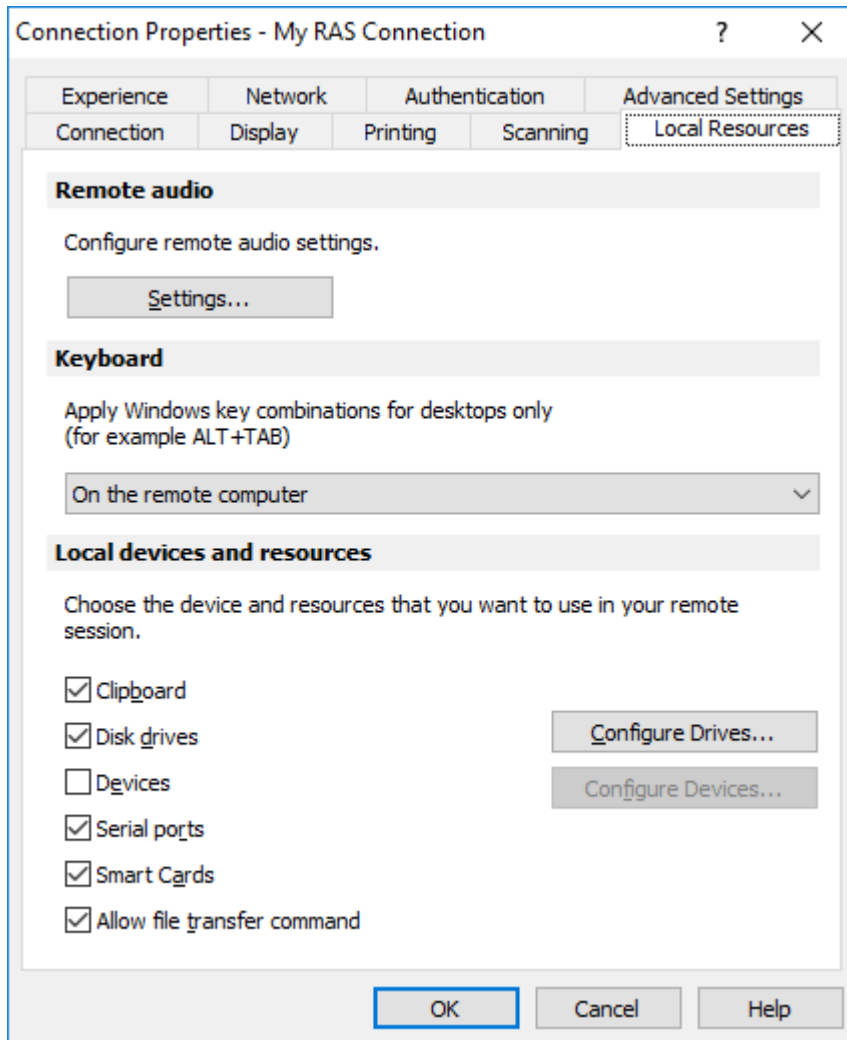
On the **Scanning** tab page, you can specify a specific scanner that should be used when one is required by a published resource.



- **Use.** Allows you to select a scanning technology. RAS Universal Scanning uses TWAIN and WIA redirection allowing an application to use either technology depending on the hardware type connected to the local computer. If you select **None**, scanning will be disabled.
- **Redirect Scanners.** Select scanners attached to your computer for redirection. You can select **All** (all attached scanners will be redirected) or **Specific only** (only the scanners you select in the provided list will be redirected).

Local Resources

Use the **Local Resources** tab page to configure how local resources are used in a remote session.



Remote Audio

Click the **Settings** button to configure remote audio playback and recording options.

Use the **Remote computer** drop-down list to select one of the following remote audio playback options:

- **Bring to this computer.** Audio from the remote computer will play on your local computer.
- **Do not play.** Audio from the remote computer will not play on your local computer and will be muted on the remote computer as well.

- **Leave at remote computer.** Audio will not play on your local computer but will play normally on the remote computer.

Use the **Quality** drop-down list to adjust the audio quality:

- **Dynamically adjust based on available bandwidth.** This option will increase or decrease the audio quality based on your connection speed. The faster the connection, the higher audio quality setting will be used.
- **Always use medium audio quality.** The audio quality is fixed at the medium level. You can use this option when you don't require the best possible audio quality and would rather use the available bandwidth for graphics.
- **Always use uncompressed audio quality.** The audio quality is fixed at the highest level. Select this option if you have a very fast connection and require the best possible audio quality.

The **Recording (if applicable)** option allows you to enable audio recording on the remote computer. For example, you can speak into a microphone on the local computer and use a sound recording application on the remote computer to record yourself.

Keyboard

Select how you want to apply key combinations (e.g. Alt+Tab) that you press on the keyboard:

- **On the local computer.** Key combinations will be applied to Windows running on the local computer.
- **On the remote computer.** Key combinations will be applied to Windows running on the remote computer.
- **In full screen mode only.** Key combinations will be applied to the remote computer only when in the full-screen mode.

Local Devices and Resources

Choose local disk drives, devices, and other resources that you want to redirect to a remote computer. Redirecting a resource makes it available for use in a remote session. For example, a redirected local disk drive will be available in a remote application, so you can read from and write to it.

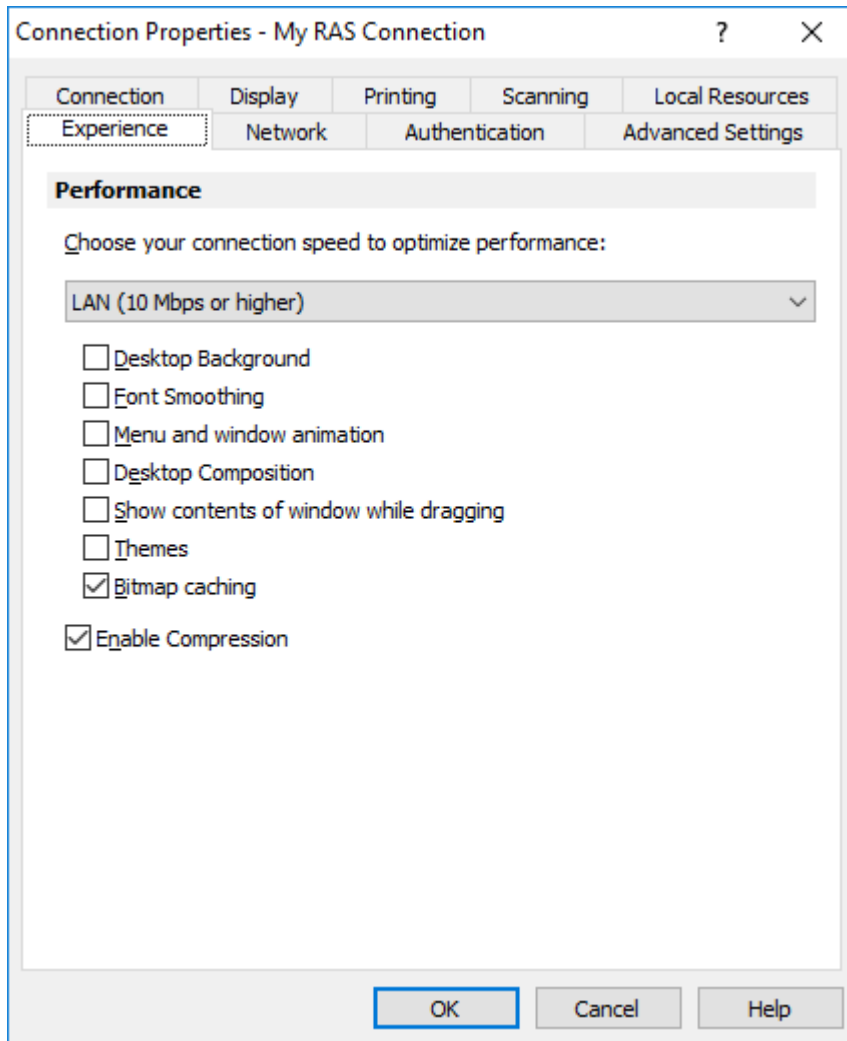
The following options are available:

- **Clipboard.** Select this option to enable the local clipboard in a remote session.
- **Disk drives.** Select this option and then click **Configure Drives**. In the dialog that opens, select local drives you want to redirect. If you select the **Use also disk drives that I plug in later** option, disk drives that you connect to your local machine later will be automatically available in a remote session.

- **Devices.** Select this option and then click **Configure Devices**. Devices that are currently connected to your local computer will appear in the list. This includes supported Plug and Play devices, media players based on the Media Transfer Protocol (MTP), and digital cameras based on the Picture Transfer Protocol (PTP). If a device is connected to your computer but does not appear in the list, it means it is not a supported Plug and Play device. Please note that disk drives and smart cards are excluded from this list (you redirect them using dedicated **Disk drives** and **Smart cards** options). The **Show previously connected devices** option displays devices that are not currently connected but were connected previously.
- **Serial ports.** Select this option to redirect serial ports.
- **Smart cards.** Select this option to redirect smart cards.
- **Allow file transfer command.** Whether to allow remote file transfer.

Experience

The **Experience** tab page allows you to tweak the connection speed to optimize the performance of the connection with the remote server.



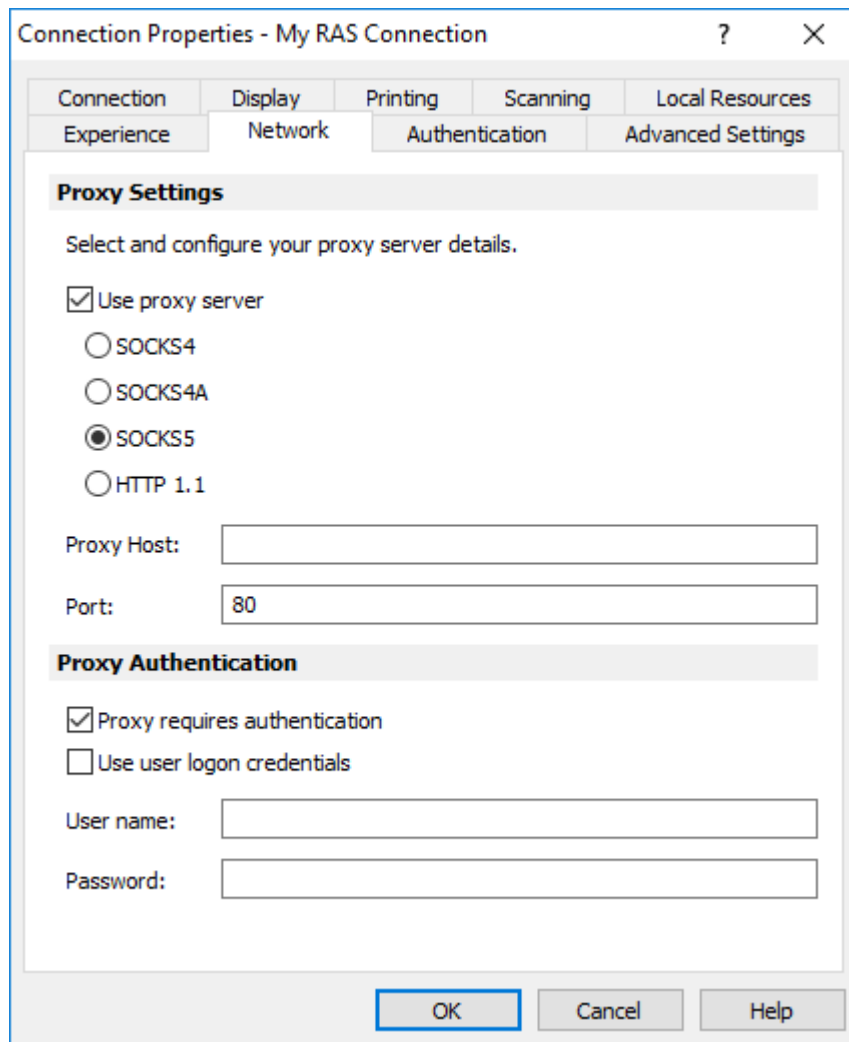
In the drop-down list, select your connection speed:

- If not sure, select the **Detect connection quality automatically** option. Please note that if you select this option, all other options, except **Enable Compression**, will be disabled and will be configured automatically based on the actual connection speed when Parallels Client is connected to Parallels RAS.
- If you select a specific speed (e.g. LAN 10 Mbps or higher), select the desired user experience options. If you are connecting to a remote computer on a local network that runs at 100 Mbps or higher, it is usually safe to have all of the experience options turned on. Otherwise, select only the options that you require.

It is also recommended to enable compression to have a more efficient connection by selecting the **Enable Compression** option.

Network

Use the **Network** tab page to configure a proxy server if you have to use one to connect to Parallels Remote Application Server.



To configure a proxy server, select the **Use proxy server** option and then select the protocol from the following list:

- **SOCKS4**. Enable this option to transparently use the service of a network firewall.
- **SOCKS4A**. Enable this option to allow a client that cannot connect to resolve the destination host's name to specify it.
- **SOCKS5**. Enable this option to be able to connect using authentication.

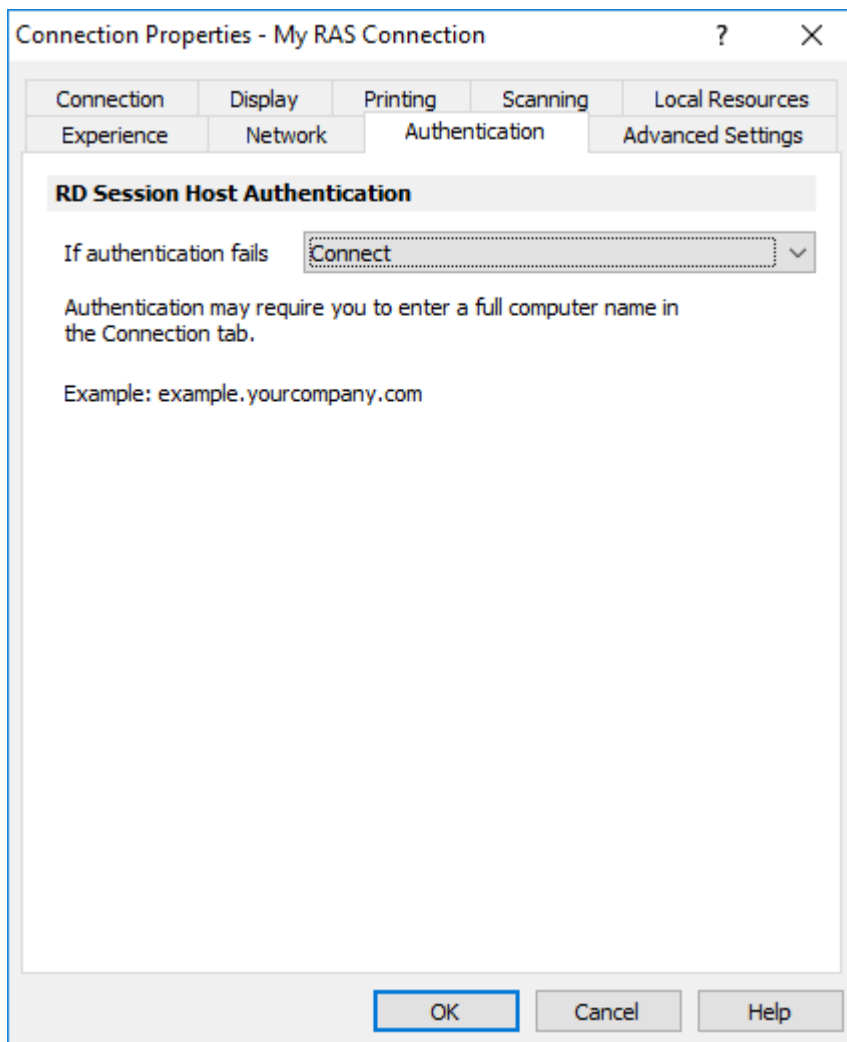
- **HTTP 1.1.** Enable this option to connect using a standard HTTP 1.1 protocol connection.

Specify the proxy host domain name or IP address and the port number.

For SOCKS5 and HTTP 1.1 protocols, select **Proxy requires authentication** and enter user credentials.

Authentication

Use the **Authentication** tab page to specify what happens if the server authentication fails.



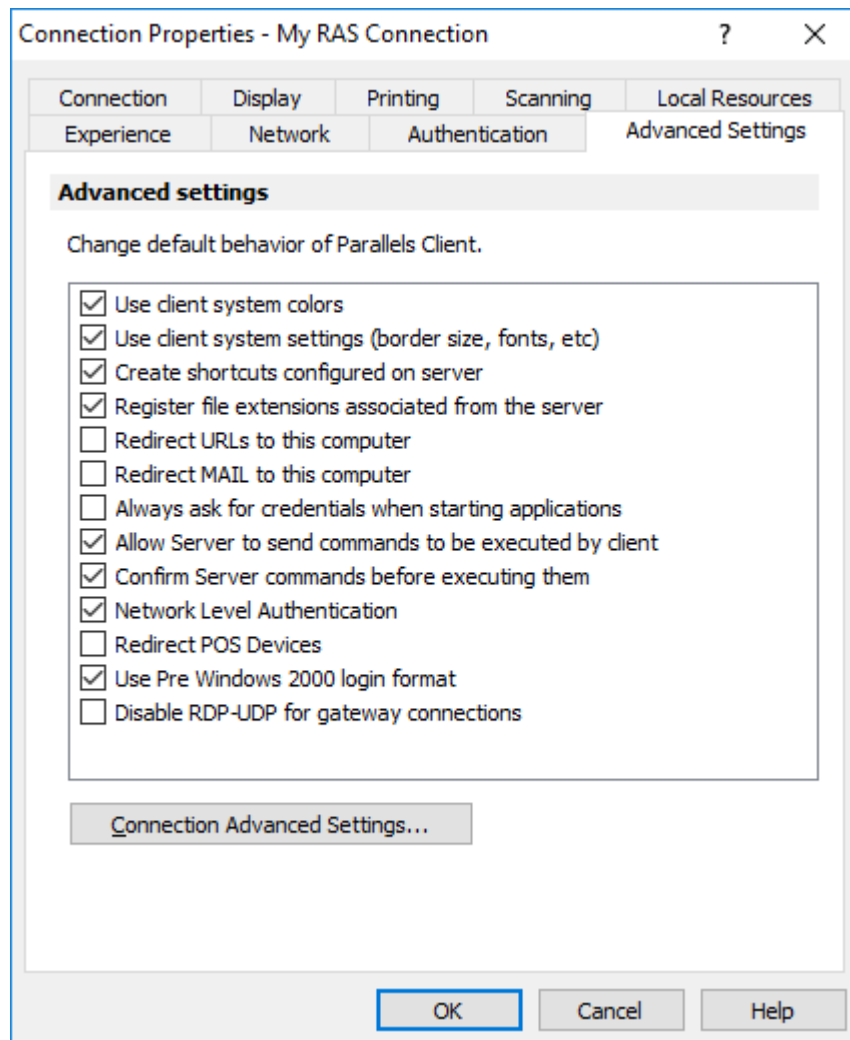
In the **If authentication fails** drop-down list, select one of the following options:

- **Connect.** The user can ignore the certificate of the server and still connect.
- **Warn.** The user is alerted about the certificate and still has the ability to choose whether to connect or not.

- **Do not connect.** The user is not allowed to connect.

Advanced Settings

The Advanced **Settings** tab page allows you to customize the default behavior of Parallels Client.



You can specify the following properties:

- **Use client system colors.** Enable this option to use the client system colors instead of those specified on the remote desktop.
- **Use client system settings.** Enable this option to use the client system settings instead of those specified on the terminal server.
- **Create shortcuts configured on server.** For each published application, the administrator can configure shortcuts that can be created on the client's desktop and the Start menu. Select this option to create the shortcuts, or clear the option if you don't want to create them.

- **Register file extensions associated from the server.** For each published application, the administrator can create file extension associations. Use this option to either register the associated file extensions or not.
- **Redirect URLs to this computer.** Enable this option to use the local web browser when opening 'http:' links.
- **Redirect Mail to this computer.** Enable this option to use the local mail client when opening 'mailto:' links.
- **Always ask for credentials when starting applications.** If this option is enabled, the user will be prompted to enter their credentials when starting applications.
- **Allow Server to send commands to be executed by client.** Enable this option to allow commands being received from the server to be executed by the client.
- **Confirm Server commands before executing them.** If this option is enabled, a message is displayed on the client to confirm any commands before they are executed from the server.
- **Network Level Authentication.** Check this option to enable network level authentication, which will require the client to authenticate before connecting to the server.
- **Redirect POS devices.** Enables the Point of Service (POS) devices such as bar code scanners or magnetic readers that are attached to the local computer to be used in the remote connection.
- **Use Pre Windows 2000 login format.** If this option is selected, it allows you to use legacy (pre-Windows 2000) login format.
- **Disable RDP-UDP for gateway connections.** Disable UDP transport when connecting through a gateway.

Connection Advanced Settings

Click the **Connection Advanced Settings** button to configure the following settings:

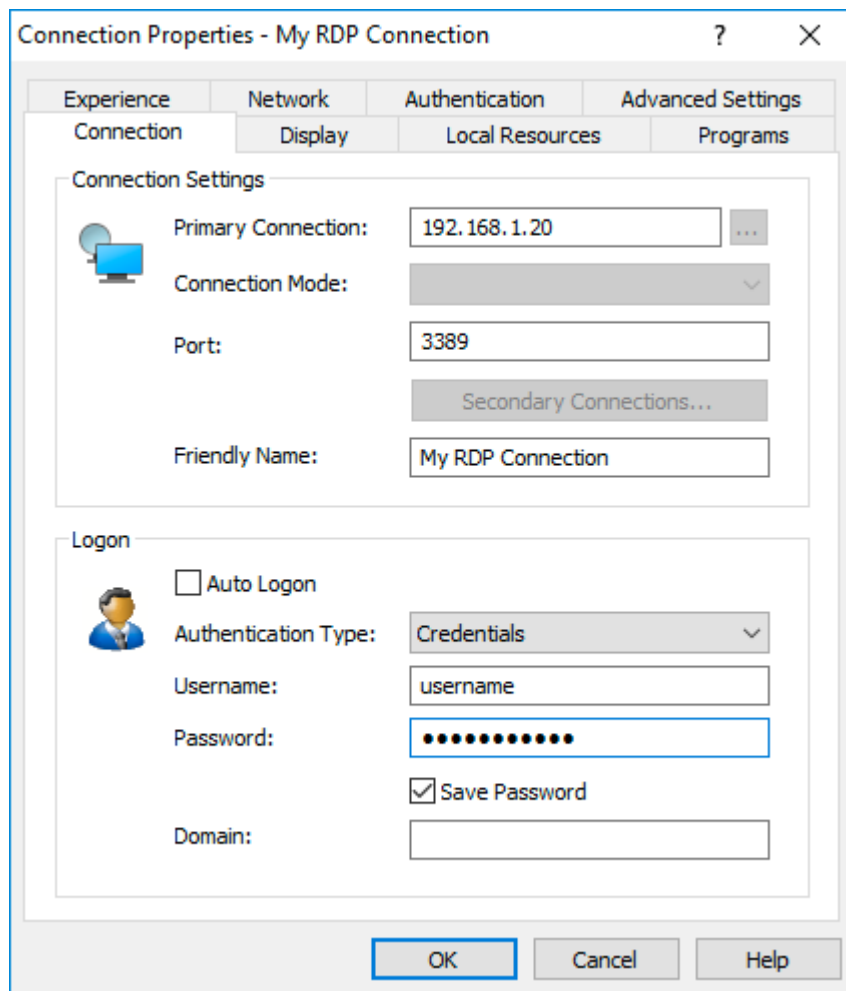
- **Connection Timeout.** This is the amount of time during which the client will try to connect to Parallels Remote Application Server until the connection is aborted. While the connection is being established, the connection banner will be shown.
- **Show Connection Banner if connection is not established within.** Specifies the time period in seconds after which the connection banner will be displayed.
- **Show Desktop if published application does not start within.** If a published application is not launched within the time period specified in this field, the server's desktop will be loaded. This is helpful if an error occurs on the server while launching an application. By loading the server's desktop, the error can be seen.
- **Reconnect if connection is dropped.** Select this option and set the number of **Connection Retries**. If a connection is dropped, the Parallels Client will automatically try to reconnect.
- **Override computer name.** Specifies the name that your computer will use during a remote desktop session. If set, this will override the default computer name. Any filtering set by the administrator on the server side will make use of the **Override computer name**.

Configuring an RDP Connection

To modify the properties of an existing standard RDP connection, right-click it in the main Parallels Client window and then click **Connection Properties** in the context menu. This will open the **Connection Properties** dialog. Properties are grouped in the dialog by functionality using tab pages. The following subsections describe each tab page in detail.

Connection

The **Connection** tab page allows you specify connection settings and logon information.



In the **Connection Settings** section, specify the following properties:

- 1 In the **Primary Connection** field, specify the remote computer hostname or IP address.

- 2** The **Port** field contains the TCP port 3389 by default, which is the standard port for RDP connections. You can modify it if the port number was changed on the remote computer.
- 3** In the **Friendly Name** field, choose and type a name of your choice, so you could easily identify the server in Parallels Client later.

In the **Logon** section, specify the following properties:

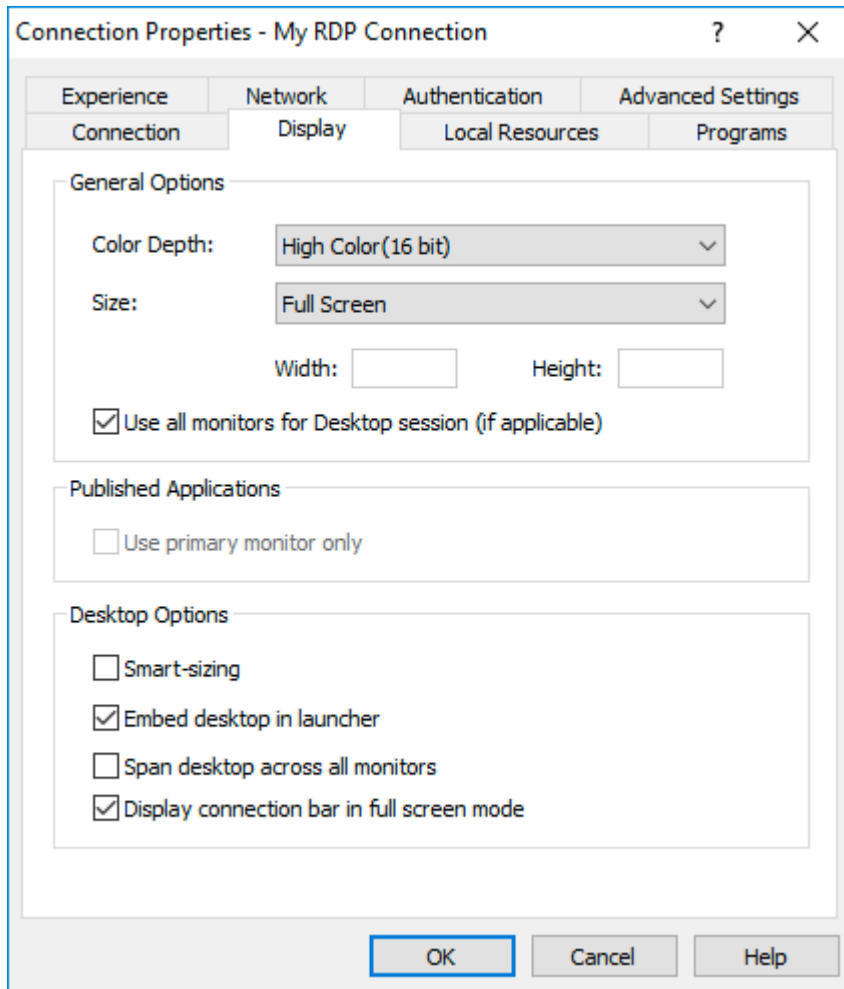
- 1** Select the **Auto Logon** option to enable Parallels Client to connect automatically (using this connection) on startup.
- 2** In the **Authentication type** drop-down list, select the desired method of authentication:
 - **Credentials.** Select this option and then enter the username, password, and domain information. You will be authenticated on the remote server using the specified credentials.
 - **Smart Card.** Select this option to authenticate using a smart card. When connecting to the remote server, insert a smart card into the card reader and then enter a PIN when prompted.
 - **Single Sign-On.** This option will be included in the list only if the Single Sign-On module is installed during Parallels Client installation. Select this option to use local system credentials to connect to the remote server.

Note for Administrators: The allowed authentication type(s) must be specified in the RAS Console in **Connection / Authentication**.

- 3** Specify your username, password, and the domain name. The **Save Password** option allows you to save your password, so you don't have to enter it every time you connect to the server.

Display

The **Display** tab page allows you to configure display options.



In the **General Options** section, specify the general display properties, including color depth and screen size. If you would like to specify a custom screen size, select **Custom** in the drop-down list and then specify the size using the **Width** and **Height** fields.

If you have more than one monitor connected to your computer, select the **Use all monitors for Desktop session** option to use all of them to display the remote desktop.

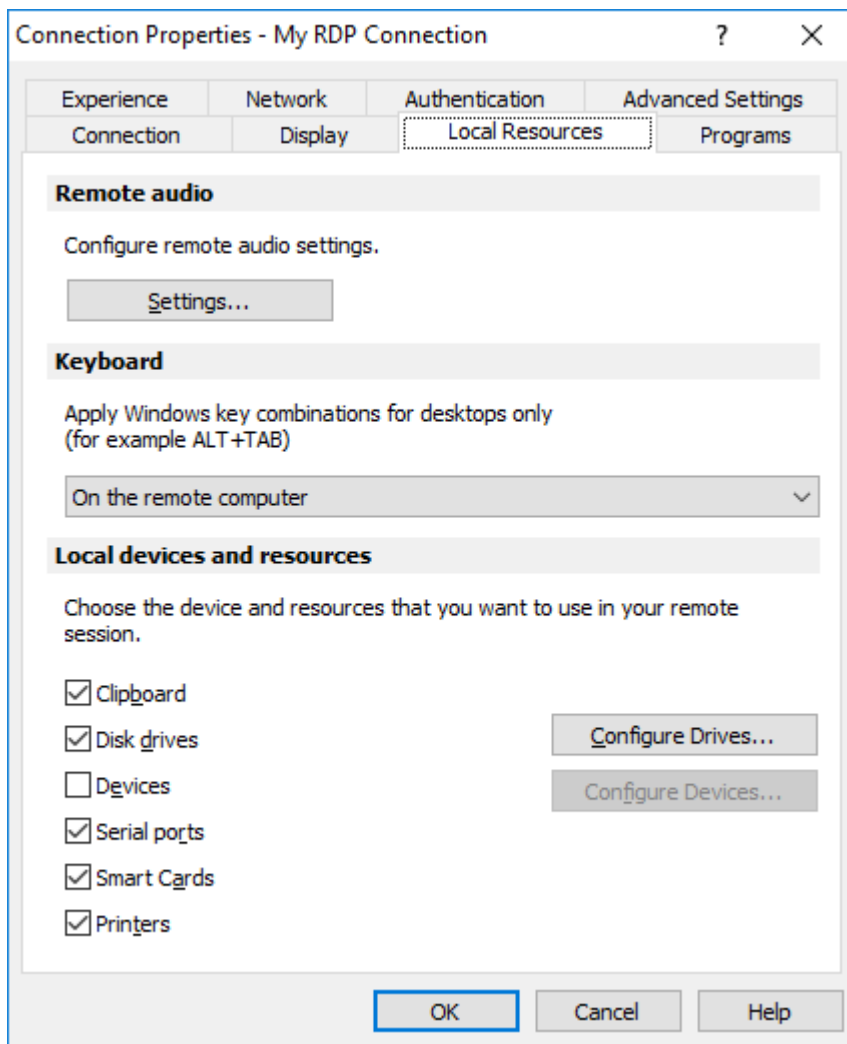
Specify the **Desktop Options** as follows:

- **Smart-sizing.** Desktop smart sizing will scale the RDP desktop to fit the connection window.
- **Embed desktop in launcher.** Enable this option to access the published desktop inside Parallels Client.

- **Span desktop across all monitors.** Enable this option to span the published desktops across all connected monitors (if you have more than one).
- **Display connection bar in full screen mode.** Enable this option to show the connection bar when connecting in full screen mode.

Local Resources

Use the **Local Resources** tab page to configure how local resources are used in a remote session.



Remote Audio

Click the **Settings** button to configure remote audio playback and recording options.

Use the **Remote computer** drop-down list to select one of the following remote audio playback options:

- **Bring to this computer.** Audio from the remote computer will play on your local computer.
- **Do not play.** Audio from the remote computer will not play on your local computer and will be muted on the remote computer as well.
- **Leave at remote computer.** Audio will not play on your local computer but will play normally on the remote computer.

Use the **Quality** drop-down list to adjust the audio quality:

- **Dynamically adjust based on available bandwidth.** This option will increase or decrease the audio quality based on your connection speed. The faster the connection, the higher audio quality setting will be used.
- **Always use medium audio quality.** The audio quality is fixed at the medium level. You can use this option when you don't require the best possible audio quality and would rather use the available bandwidth for graphics.
- **Always use uncompressed audio quality.** The audio quality is fixed at the highest level. Select this option if you have a very fast connection and require the best possible audio quality.

The **Recording (if applicable)** option allows you to enable audio recording on the remote computer. For example, you can speak into a microphone on the local computer and use a sound recording application on the remote computer to record yourself.

Keyboard

Select how you want to apply key combinations (e.g. Alt+Tab) that you press on the keyboard:

- **On the local computer.** Key combinations will be applied to Windows running on the local computer.
- **On the remote computer.** Key combinations will be applied to Windows running on the remote computer.
- **In full screen mode only.** Key combinations will be applied to the remote computer only when in the full-screen mode.

Local Devices

Choose local disk drives, devices, and other resources that you want to redirect to a remote computer. Redirecting a resource makes it available for use in a remote session. For example, a redirected local disk drive will be available in a remote application, so you can read from and write to it.

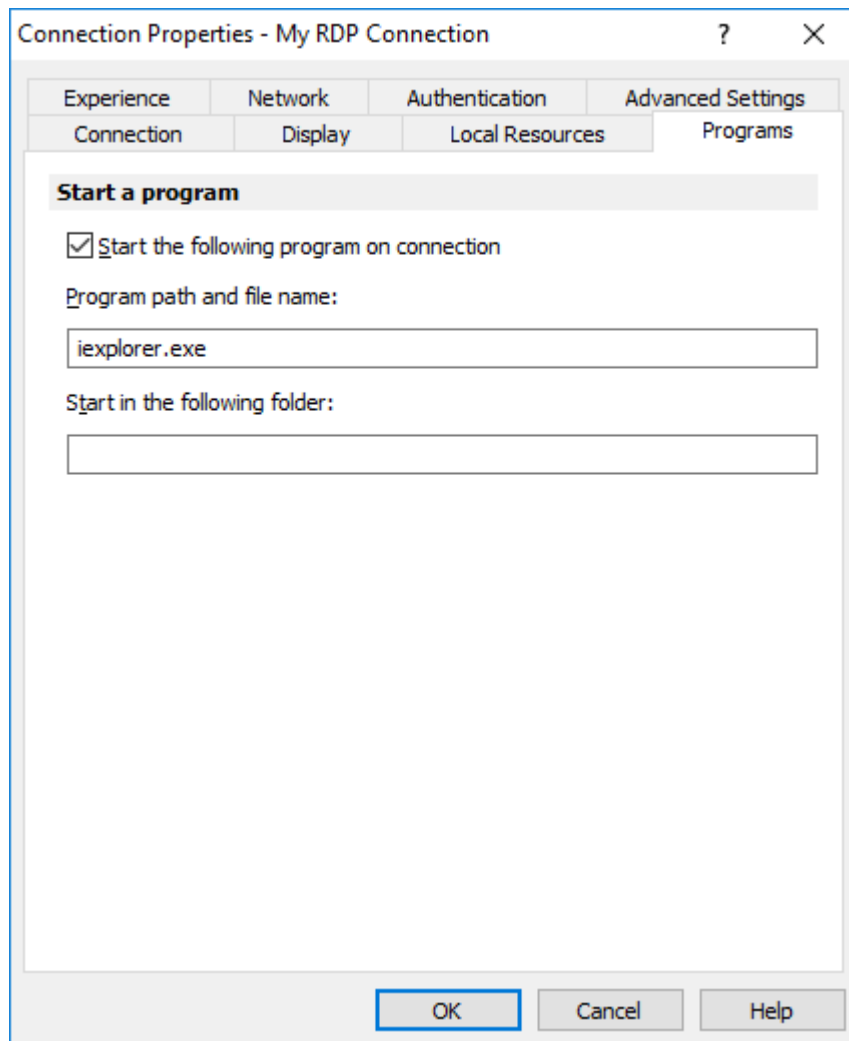
The following options are available:

- **Clipboard.** Select this option to enable the local clipboard in a remote session.
- **Disk drives.** Select this option and then click **Configure Drives**. In the dialog that opens, select local drives you want to redirect. If you select the **Use also disk drives that I plug in later** option, disk drives that you connect to your local machine later will be automatically available in a remote session.

- **Devices.** Select this option and then click **Configure Devices**. Devices that are currently connected to your local computer will appear in the list. This includes supported Plug and Play devices, media players based on the Media Transfer Protocol (MTP), and digital cameras based on the Picture Transfer Protocol (PTP). If a device is connected to your computer but does not appear in the list, it means it is not a supported Plug and Play device. Please note that disk drives, printers, and smart cards are excluded from this list (you redirect them using dedicated **Disk drives, Printers, and Smart cards** options). The **Show previously connected devices** option displays devices that are not currently connected but were connected previously.
- **Serial ports.** Select this option to redirect serial ports.
- **Smart cards.** Select this option to redirect smart cards.
- **Printers.** Select this option to redirect local printers.

Programs

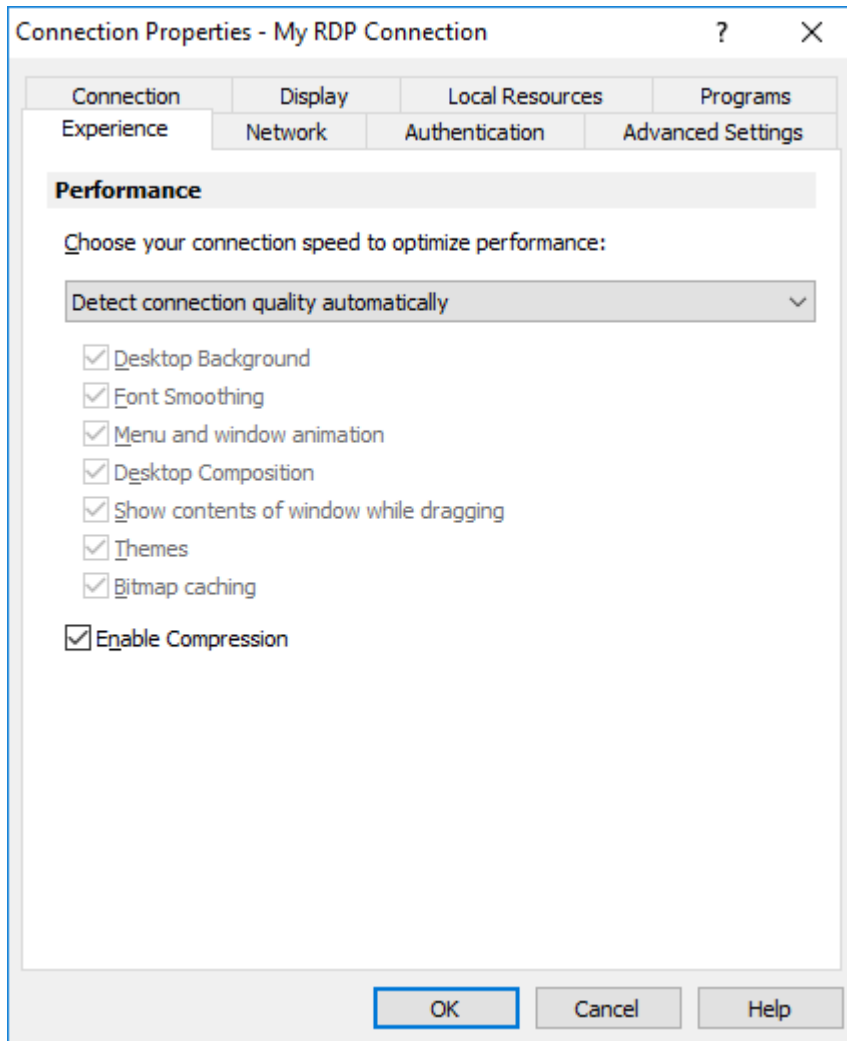
The **Programs** tab page allows you to specify a program that will be started automatically on the remote computer when you establish a connection with it.



Select the **Start the following program on connection** option and then specify the **Program path and file name** and **Start in the following folder** option, if needed.

Experience

The **Experience** tab page allows you to tweak the connection speed to optimize the performance of the connection with the remote server.



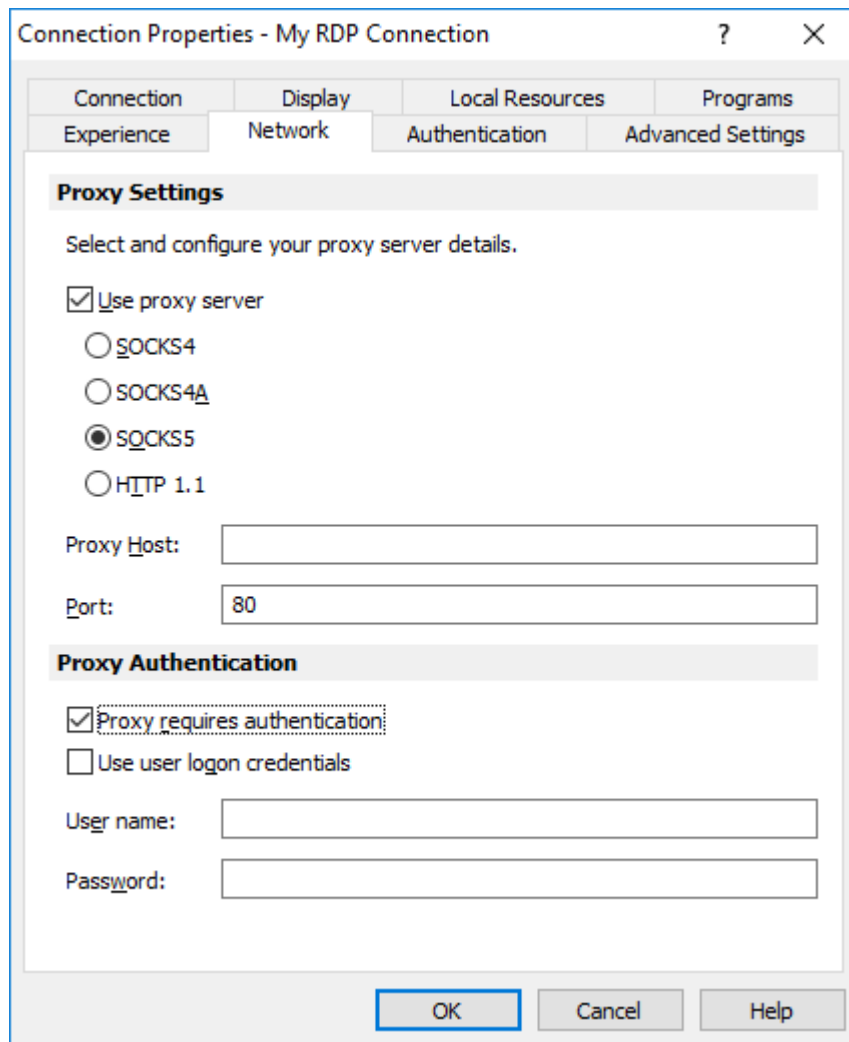
In the drop-down list, select your connection speed:

- If not sure, select the **Detect connection quality automatically** option. Please note that if you select this option, all other options, except **Enable Compression**, will be disabled and will be configured automatically based on the actual connection speed when Parallels Client is connected to Parallels RAS.
- If you select a specific speed (e.g. LAN 10 Mbps or higher), select the desired user experience options. If you are connecting to a remote computer on a local network that runs at 100 Mbps or higher, it is usually safe to have all of the experience options turned on. Otherwise, select only the options that you require.

It is also recommended to enable compression to have a more efficient connection by selecting the **Enable Compression** option.

Network

Use the **Network** tab page to configure a proxy server if you have to use one to connect to the remote computer.



To configure a proxy server, select the **Use proxy server** option and then select the protocol from the following list:

- **SOCKS4**. Enable this option to transparently use the service of a network firewall.
- **SOCKS4A**. Enable this option to allow a client that cannot connect to resolve the destination host's name to specify it.
- **SOCKS5**. Enable this option to be able to connect using authentication.

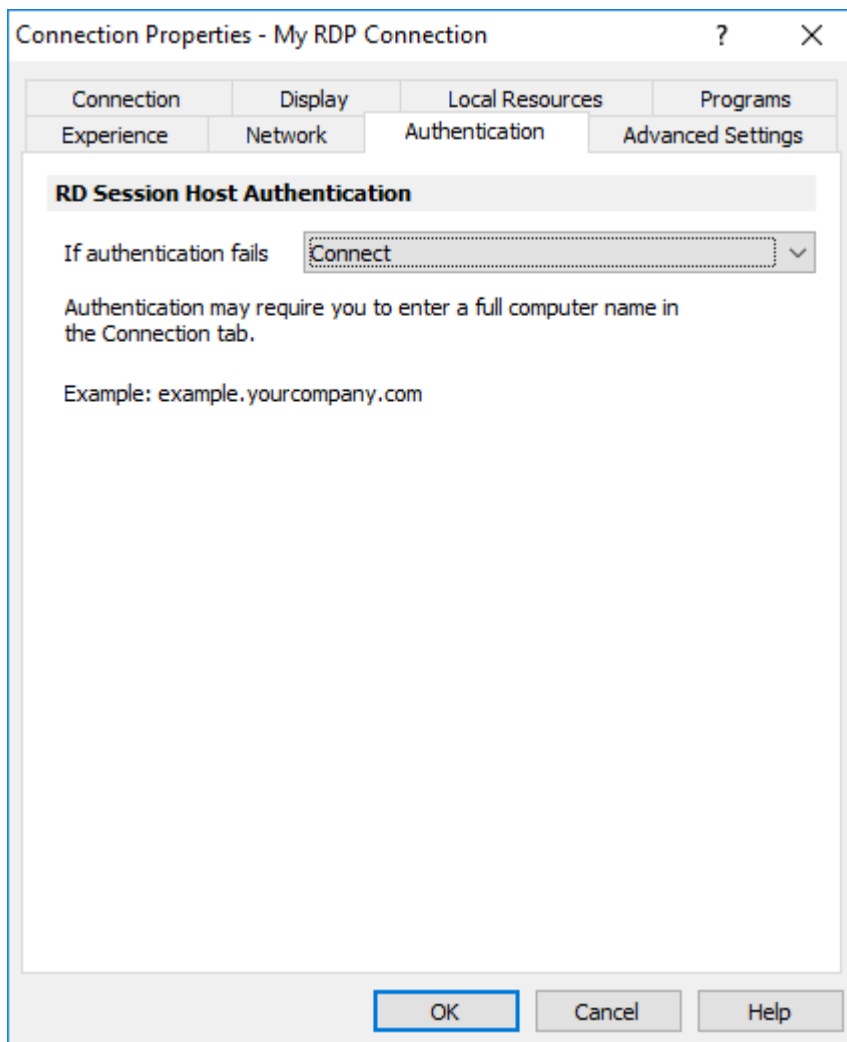
- **HTTP 1.1.** Enable this option to connect using the standard HTTP 1.1 protocol connections.

Specify the proxy host domain name or IP address and the port number.

For SOCKS5 and HTTP 1.1 protocols, select **Proxy requires authentication** and enter user credentials.

Authentication

Use the **Authentication** tab page to specify what happens if server authentication fails.



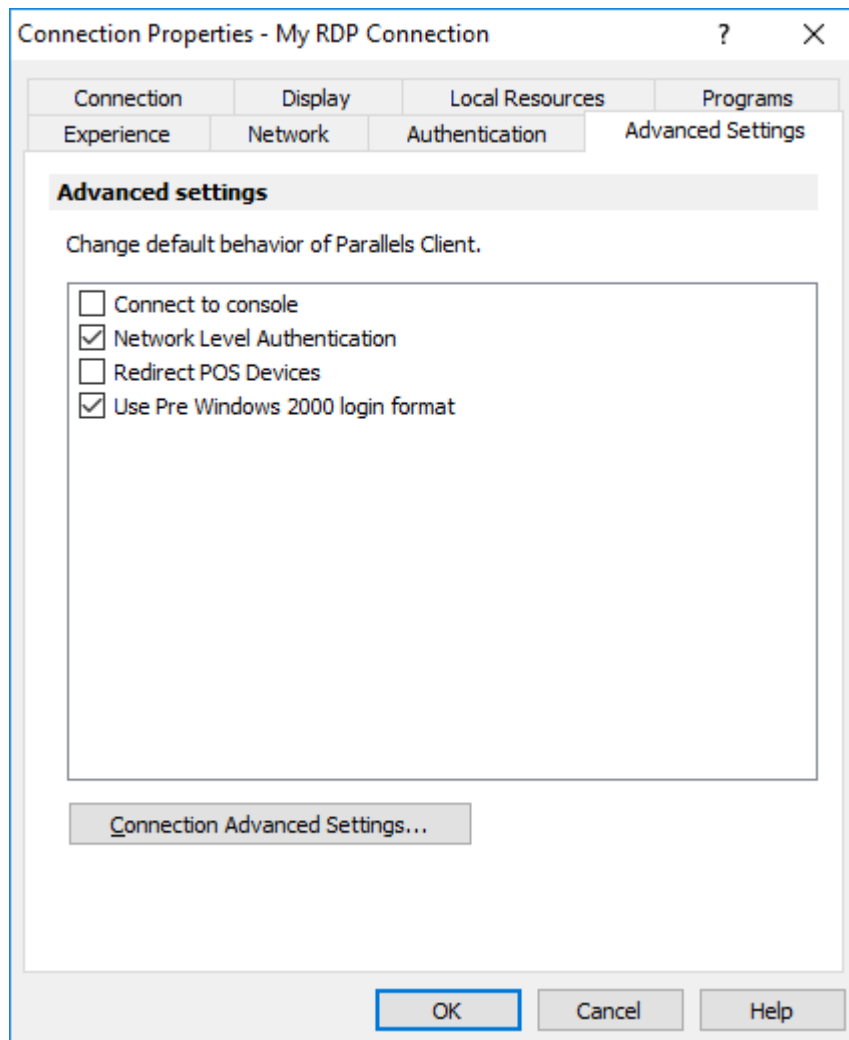
In the **If authentication fails** drop-down list, select one of the following options:

- **Connect.** The user can ignore the certificate of the server and still connect.
- **Warn.** The user is alerted about the certificate and still has the ability to choose whether to connect or not.

- **Do not connect.** The user is not allowed to connect.

Advanced Settings

The Advanced **Settings** tab page allows you to customize the default behavior of Parallels Client.



You can specify the following properties:

- **Connect to console.** This option is used for administration of a Remote Desktop Session Host server. It acts as if a standard Remote Desktop connection is initiated from the command line with the `/admin` option.
- **Network Level Authentication.** Select this option to enable network level authentication, which will require the client to authenticate before connecting to the server.
- **Redirect POS devices.** Enables the Point of Service (POS) devices such as bar code scanners or magnetic readers that are attached to the local computer to be used in the remote connection.

- **Use Pre Windows 2000 login format.** If this option is selected, it allows you to use legacy (pre-Windows 2000) login format.

Connection Advanced Settings

Click the **Connection Advanced Settings** button to open the **Connection Advanced Settings** dialog.

In the **Connection** section, specify the following properties:

- **Connection Timeout.** The amount of time Parallels Client will try to connect to the remote computer until the connection is aborted. While the connection is being established, the connection banner will be shown.
- **Show Connection Banner if connection is not established within.** Specifies the time period in seconds after which the connection banner will be displayed.

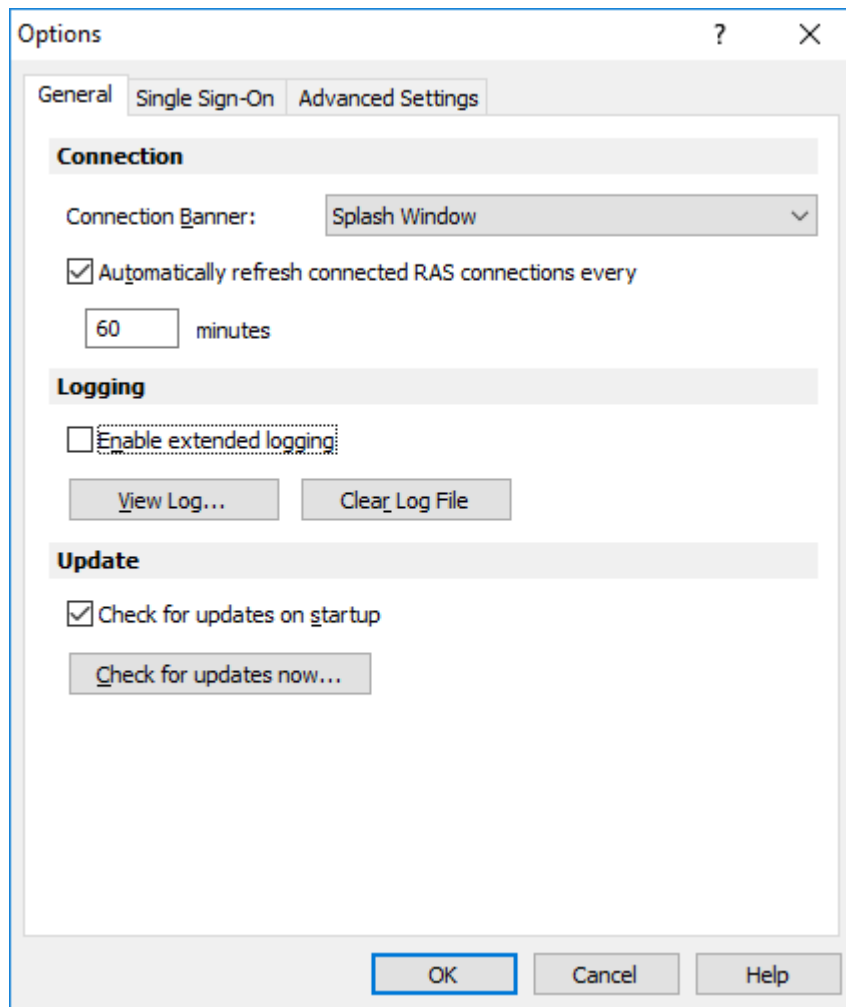
In the Reconnection section, specify the following properties:

- **Reconnect if connection is dropped.** Select this option and set the number of **Connection Retries**. If a connection is dropped, the Parallels Client will automatically try to reconnect.
- **Show Connection Banner if reconnection is not established within.** Specifies the time period in seconds after which the connection banner will be displayed.

Override computer name. Specifies the name that your computer will use during a remote desktop session. If set, this will override the default computer name. Any filtering set by the administrator on the server side will make use of the **Override computer name**.

Configuring Global Options

To configure Parallels Client global options, click **Tools > Options** in the main menu.



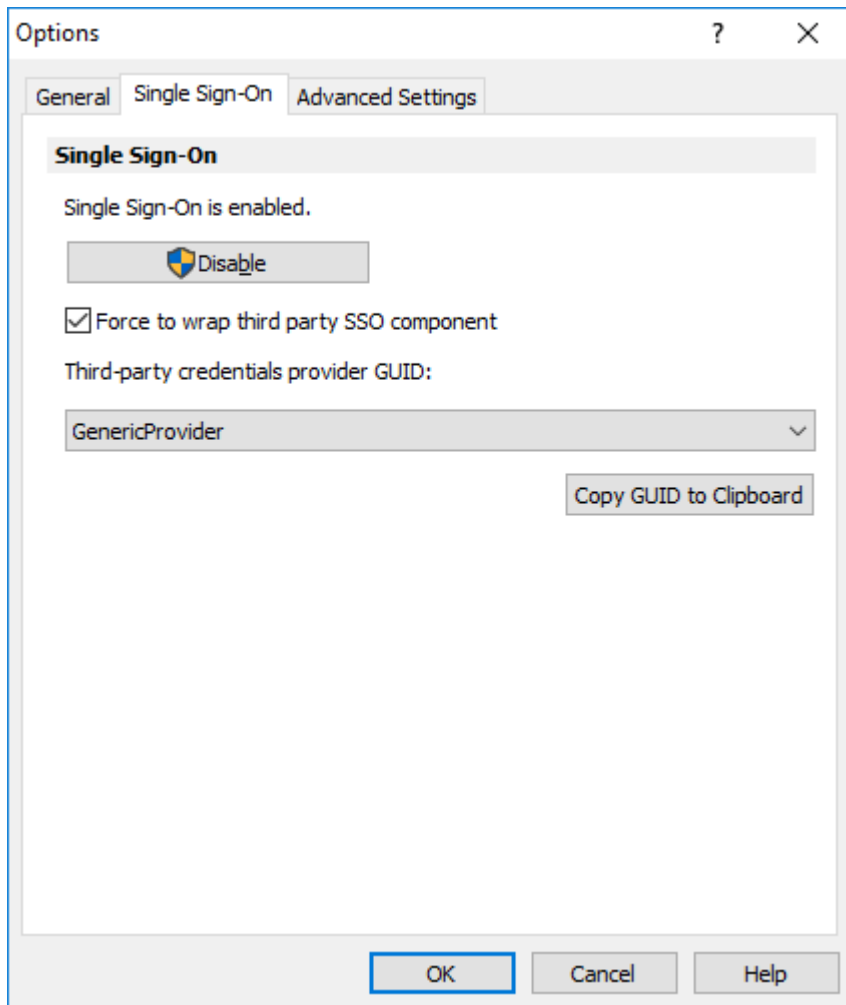
General

On the **General** tab page, specify the following options:

- **Connection Banner.** Connection banner is shown when the Parallels Client is connecting to a server or a desktop. You can choose to have a Splash Window, a Taskbar Toast Window icon, or you can choose to hide the connection banner.
- **Automatically refresh connected RAS connection every.** Specifies the auto refresh time frame for each connection.
- **Logging.** Enables or disables extended logging and allows you to view or clear the log file.

- **Check for updates on startup.** This option is available only with administrative rights. If this option is selected, Parallels Client will check for available Parallels Client updates on startup. You can also click the button to check for updates.

Single Sign-On

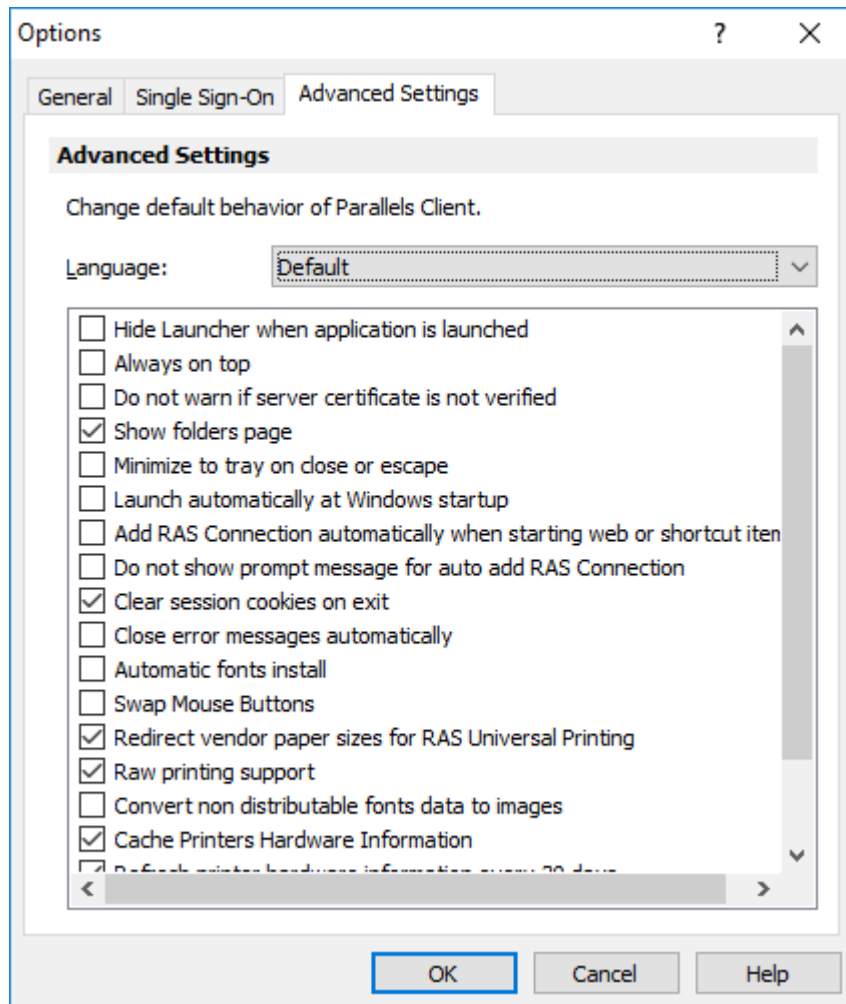


On the **Single Sign-On** page, specify the SSO settings if your organization is using it.

- 1 Click the **Enable** button to enable SSO.
- 2 If your organization is using a third-party SSO component (other than the one provided by Parallels RAS), select the **Force to wrap third party SSO component** option and then select the provider.
- 3 The **Copy GUID to Clipboard** button is used to copy the ID of the SSO component to the clipboard.

Advanced Settings

The **Advanced Settings** tab page allows you to configure advanced options.



The following advanced options are available:

- **Hide Launcher when application is launched.** If this option is enabled, the launcher will be minimized to the system tray after an application is launched.
- **Always on Top.** With this feature enabled, other applications will no longer mask the launcher.
- **Do not warn if server certificate is not verified.** When connected over SSL, and the certificate is not verified, a warning message will be displayed. You can disable this warning message by enabling this option.
- **Show folders page.** Enabling this option will show the available folders while showing the hierarchy of the application groups as configured on the server.
- **Minimize to tray on close or escape.** Enable this feature to place the Parallels Client into the System Tray when you click on the **Close** button or hit escape.

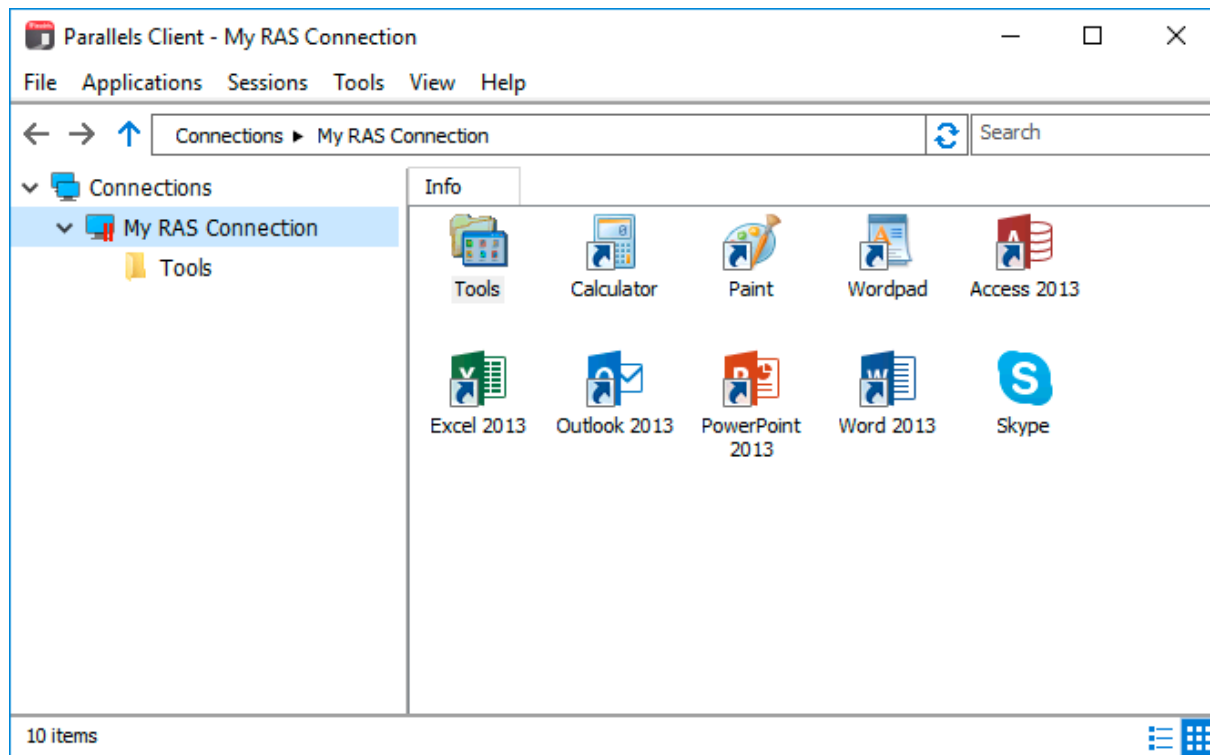
- **Launch automatically at Windows startup.** This option will place a shortcut in the start menu folder of the client and the Parallels Client will launch automatically on Windows startup.
- **Add RAS Connection automatically when starting web or shortcuts items.** This option will add the connection preferences in the Parallels Client when starting an item contained in a connection that is not yet listed.
- **Don't show prompt message for auto add RAS Connections.** Enable this option to disable prompt messages when adding auto connections.
- **Clear session cookies on exit.** When a user logs on, a Parallels Remote Application Server logon cookie is kept on the client side. This will allow the user to connect again with Remote Application Server without re-authenticating. Check this option to delete any cookies when the user closes the Parallels Client.
- **Close error messages automatically.** When a session disconnects because of an error, the error is automatically dismissed after 15 seconds.
- **Automatic fonts installed (administrators only).** If automatic fonts are installed on the server, they will be available when a session connects.
- **Swap Mouse Buttons.** When enabling this setting, the mouse buttons will be swapped on the remote computer.
- **Redirect vendor paper sizes for RAS Universal Printing.** When enabling this setting, non-standard paper sizes which are not included in the standard options will be redirected to the client. Sizes may vary depending on the vendor.
- **Raw printing support.** When enabling this setting, printing will still work for applications sending data in RAW format.
- **Convert non distributable fonts data to images.** During RAS Universal Printing, if a document includes non-distributable fonts, each page is converted to an image.
- **Cache printers hardware information.** Caching of printer hardware information locally to speed-up RAS universal printer redirection.
- **Cache RAS Universal Printing embedded fonts.** Caching of embedded fonts locally to speed-up RAS universal printing process time.
- **DPI aware.** This will force a published application to be DPI-aware depending on the client's DPI settings. This feature works on Windows 8.1 or higher.

Using a RAS Connection

To connect to Parallels Remote Application Server, double-click a connection in the **Connections** list (or right-click a connection and choose **Connect**). You can have multiple active connections at the same time. To switch between active connections, click a connection in the left or the right pane.


Launching Published Resources

After you connect to a remote server, the connection node is populated with published folders. When you select a folder in the left pane, the resources that it contains are displayed in the right pane. If your administrator hasn't published any folders, then the available resources are displayed when you select the connection itself.



To launch a resource, double-click it in the right pane. The resource will open on your Windows desktop. You can also open a resource by selecting it in the right pane and then clicking **Applications > Open** in the main menu.

By default, Parallels Client is configured to minimize to the system tray when you launch a resource.

To bring it back up, open the system tray, then right-click the Parallels Client icon  and choose **Restore**. To change this default behavior, click **Tools > Options** in the main menu, then select the **Advanced Settings** tab and clear the **Hide Launcher when application is launched** option.

You can navigate and customize the published resources view as follows:

- Use the arrows at the top of the left pane to navigate the **Connections** tree left, right, or up.
- Expand an active connection node to view published folders (when they are available).
- Click a part of the navigation string (e.g. Connections > My RAS Connection > Applications) to display the corresponding tree node.

- Click the recycle icon to refresh the published resources view. If there were changes on the server side, they will be reflected in Parallels Client.
- Use the **Search** box to search for a resource. The list will be filtered as you type. To remove the filter, clear the box.
- Use the **View** menu item to display published resources as icons, tiles, list, etc. To quickly switch between icons and a detailed list, click one of the two icons in the lower right corner of the main window.

Working with Remote Applications

When a remote application is launched on your PC, you can work with it just like with a local application, which means that you can perform any of the following actions:

- Open local files in the application.
- Create new files and save them locally.
- Maximize and minimize the application (if it has the controls for it in general).
- Move the application around Windows desktop.
- Print documents or graphics to a local printer.
- Use a scanner connected to your PC.
- Beginning with Parallels RAS v16.2, you can drag and drop files to remote applications. For example, you can drag and drop a local file to a remote application to open it, or you can drag and drop a file to Windows Explorer running remotely to copy it. Some limitations apply, so it may not work for all types of files and applications. For example, you cannot drag and drop OLE objects, and some others.

In other words, a remote application gives you full control and is no different from an application running locally on your PC.

Managing Shortcuts

After establishing a connection with Parallels RAS and retrieving the list of the available published resources, you can create a shortcut for a remote application or desktop on your local Windows desktop.

To manage shortcuts, click the **Applications** menu item and choose one of the following items:

- **Create Shortcut on Desktop.** Create a shortcut on the local desktop for the selected published resource.
- **Create Shortcut for All Visible Applications.** Create shortcuts on the local desktop for all resources displayed in the right pane.
- **Delete Shortcuts From Desktop.** Delete all shortcuts from the local desktop.

Managing Sessions

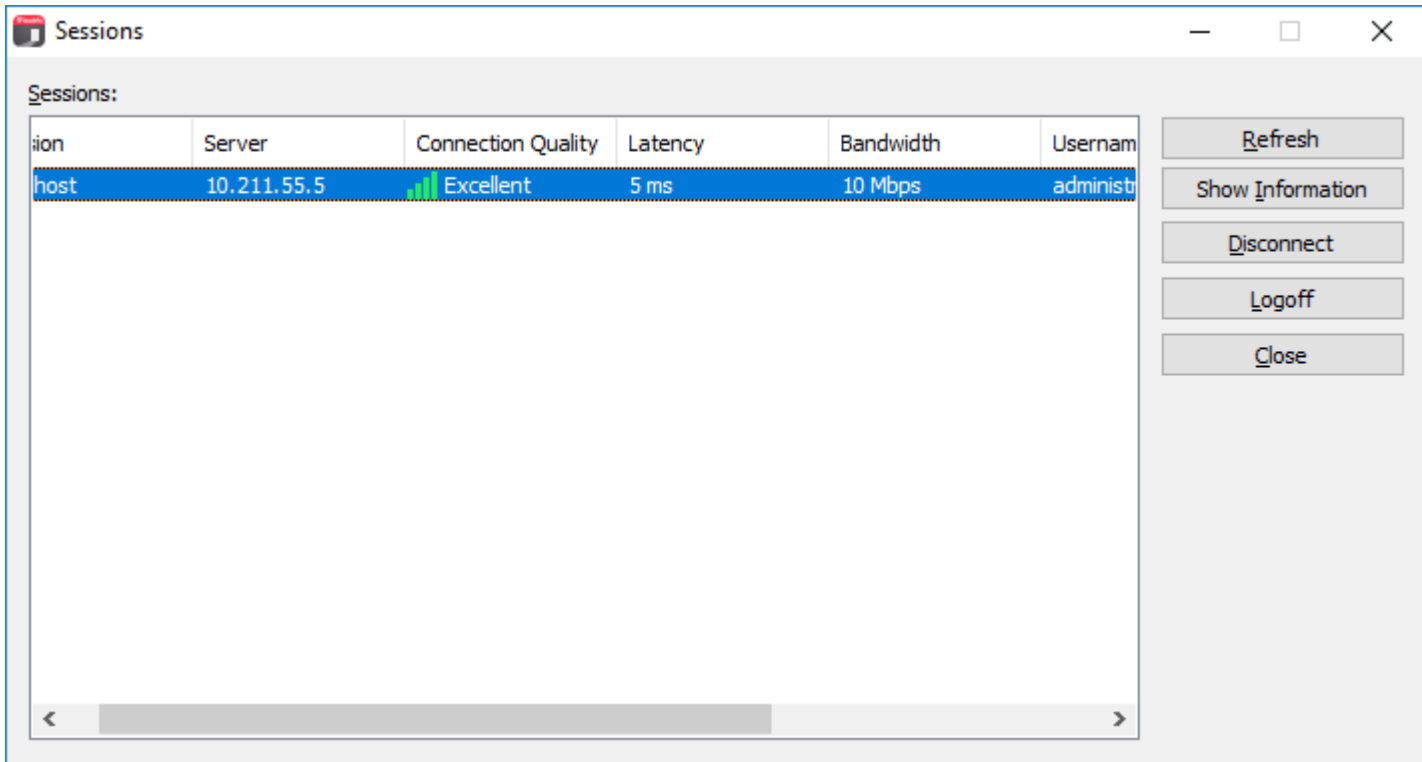
When you launch a remote application or desktop in Parallels Client, a session is created for the connection. You can manage sessions from the **Sessions** menu, which allows you to perform the following tasks:

- **Connect.** Connect to Parallels RAS using the selected connection settings. If the selected connection is active, this menu item is disabled.
- **Refresh.** Refresh the published resources view (the information is re-retrieved from Parallels RAS).
- **Log Off.** End the remote session.
- **Send Ctrl-Alt-Del.** Send the key combination to the remote server.
- **Session Information.** View and manage active session(s). See below for more information.
- **Disconnect All RAS Sessions.** Disconnect all active Parallels Client sessions. The corresponding sessions running on the remote server continue to run.
- **Log Off All RAS Sessions.** Logs off all active sessions on the local and the remote computer.

Assessing Network Performance

When users experience poor performance while working with remote applications or desktops in Parallels Client, the issue may not be related to back-end Parallels RAS components, but simply due to poor network conditions. Parallels Client provides you with the ability to assess network performance while an active session is running.

To assess network performance, click **Sessions** > **Session Information** in the main menu. The **Sessions** dialog opens where you can view active session information.



The columns in the **Sessions** table are:

- **Session.** Session name.
- **Server.** Remote server name or IP address.
- **Connection Quality.** Can be one of the following: Poor, Fair, Good, Excellent.
- **Latency.** Connection round-trip delay time, in milliseconds.
- **Bandwidth.** Connection bandwidth.
- **Username.** Username of the session owner.
- **Domain.** Domain name.
- **Type.** Connection type (RAS or RDP).

The **Connection Quality**, **Latency**, and **Bandwidth** column values should give you enough information to identify poor network conditions. If network performance is not as expected, you can address the issue from this perspective. You can also view the connection quality information on the **Session Information** dialog (**Connection Quality** section). To open the dialog, select a session and click the **Show Information** button.

The buttons in the **Sessions** dialog allow you to perform the following actions:

- **Refresh.** Refresh the **Sessions** list.
- **Show Information.** Display additional session information.
- **Disconnect.** Disconnect from Parallels RAS. The resource (or resources) will be closed on your local desktop, but will continue to run on the remote server. If you open the resource after that, your work will be where you left it. If you had more than one instance of a resource opened before you disconnected from Parallels RAS, all of them will open on your desktop.
- **Logoff.** End the session. This will close all running resources on the remote server. You should save all your data before ending a session.
- **Close.** Close the **Sessions** dialog.

Changing Domain Password

If you need to change your domain account password, you can do it right from Parallels Client.

Note: If your domain password will expire soon, you will see a notification in the Windows taskbar (above the Parallels Client icon) when you connect to Parallels RAS. To change your domain password at that time, click on the notification itself, which will open the **Change Domain Password** dialog, or you can close the notification and change the password later as described below.

To change your domain password (if required or for any other reason):

- 1 Click **File > Change Domain Password** in the main menu (or right-click a connection and choose **Change Domain Password**).
- 2 In the **Logon** dialog, type your current password and click **OK**.
- 3 In the **Change Password** dialog, enter a new password in both fields and click **OK**.

Your domain account password is now changed. Your existing connections in Parallels Client are automatically updated to use the new password.

Using an RDP Connection

After adding a Standard Remote Desktop connection, double-click it (or right-click > **Connect**) to establish a connection with the remote computer.

You can have multiple active connections at the same time (both standard RDP and Remote Application Server). To switch between active connections in Parallels Client, click a connection in the left pane or click the corresponding tab page in the right pane.

Right-click an active RDP connection in the **Connections** list to perform the following actions:

- **Connect.** This item is disabled for an active connection.
- **Connection Properties.** Opens the Connection Properties dialog where you can configure the connection. See **Configuring an RDP Connection** for details (p. 35).

- **Smart Sizing.** If enabled, smart-sizing will resize the remote desktop so it fits the available area.
- **Embed in Launcher.** Click this item to move the remote desktop to a new window (it will float outside the main Parallels Client window). To return the remote desktop back to the Parallels Client window, click the menu item again.
- **Create Shortcut on Desktop.** Creates a shortcut for this connection on the local desktop.
- **Delete Shortcut from Desktop.** Removes the connection shortcut from the desktop.
- **Disconnect.** Disconnects the selected connection.
- **Delete.** Deletes the connection.

Exporting and Importing Parallels Client Settings

You can export current Parallels Client settings to a file to have a backup or to import the settings into Parallels Client installed on a different computer. The following settings are exported:

- All existing connections including all individual connection properties.
- Parallels Client global options.

To export the current Parallels Client settings to a file, click **File** on the main menu and then click **Export Settings**. In the dialog that opens, specify a file name and a destination folder. Click **Save** to export the settings. The file is saved with the ".2xc" extension.

To import the settings, click **File > Import Settings**. In the dialog that opens, select the ".2xc" file and click **Open**. Please note that the Parallels Client settings stored in a file will override the current Parallels Client settings.

Parallels Client Command Line Parameters

Parallels Client for Windows parameters are available when launching published application and published desktop from the command line.

Parameters	Note
s!='primary server'	Primary Server hostname or IP address.
b!='backup server'	Secondary Server hostname or IP address.
a!='application/desktop id'	Published Application/Desktop ID.
p!='override application params'	
t!='port'	Port of the RAS Remote Application Serverconnection.
u!='username'	Username for the user to connect with.
q!='password'	Password for the user.
d!='domain' ignored if user name is in UPN format	Domain name.

l!= '0/1' 0 use primary server, 1 user backup server	Specify value in order to connect either to primary or backup server.
m!= 'connection mode' (gateway mode = 0, direct mode 1, gateway ssl mode = 2, direct ssl = 3, direct rdp=4)	Specify value for the connection mode.
o!= '0/1' if set to 1 credentials are overwritten with SSO information if available	When set to 1, credentials are overwritten with SSO credentials.
il= 'connection alias'	Specify a connection Alias.
c!	Always ask for credentials.
r!	Reconnect if connection is dropped .

Example:

- 1 In Command Prompt, go to the location where Parallels Client is installed and run the following command:

```
TSCClient.exe s!= '2008ad1.2x.testing' a!= '#50' t!= '80' d!= '2x.testing'
u!= 'testerjm' q!= '123456' m!= '0'
```

Running the above command will launch Published application with ID92, for user testerjm.

Index

A

Adding a New Connection - 16
Advanced Parallels Client Installation - 13
Advanced Settings - 33, 45
Assessing Network Performance - 53
Authentication - 32, 44

C

Changing Domain Password - 55
Configuring a RAS Connection - 18
Configuring an RDP Connection - 35
Configuring Global Options - 47
Connecting to Parallels Remote Application
Server - 9
Connection - 19, 35

D

Display - 22, 37

E

Experience - 30, 42
Exporting and Importing Parallels Client
Settings - 56

G

Getting Started - 5

I

Installing Parallels Client Manually - 8
Installing Parallels Client Using an Invitation
Email - 5

L

Launching Published Resources - 51
Local Resources - 27, 38

M

Managing Sessions - 53
Managing Shortcuts - 52

N

Network - 31, 43

P

Parallels Client Command Line Parameters -
56
Printing - 23
Programs - 41

S

Scanning - 26
System Requirements - 5

U

Using a RAS Connection - 50
Using an RDP Connection - 55
Using Parallels Client for Windows - 16

W

Working with Remote Applications - 52