



Parallels Remote Application Server

Parallels Client for Chrome User's
Guide

v16.2

Parallels International GmbH
Vordergasse 59
8200 Schaffhausen
Switzerland
Tel: + 41 52 672 20 30
www.parallels.com

Copyright © 1999-2017 Parallels International GmbH. All rights reserved.

This product is protected by United States and international copyright laws. The product's underlying technology, patents, and trademarks are listed at <http://www.parallels.com/about/legal/>.

Microsoft, Windows, Windows Server, Windows Vista are registered trademarks of Microsoft Corporation.
Apple, Mac, the Mac logo, OS X, macOS, iPad, iPhone, iPod touch are trademarks of Apple Inc., registered in the US and other countries.

Linux is a registered trademark of Linus Torvalds.

All other marks and names mentioned herein may be trademarks of their respective owners.

Contents

Getting Started with Parallels Client for Chrome	4
Install Parallels Client for Chrome.....	4
Create a Connection	5
Create a Connection Manually.....	5
Work With a Remote Server	6
Upload and Download Files.....	7
Using Parallels Client for Chrome.....	10
Edit Connection Settings	10
Experience	11
Advanced Settings	12
Remove a Connection	13
Edit Parallels Client Settings.....	14
Check the Version and Build Number	15
Index	16

CHAPTER 1

Getting Started with Parallels Client for Chrome

About Parallels Client for Chrome

Parallels Client for Chrome is an extension to the Chrome web browser that allows you to connect to Remote Application Server.

About This Guide

Read this guide to learn how to:

- install Parallels Client for Chrome (p. 4);
- establish a connection to Remote Application Server (p. 5);
- work with remote servers using Parallels Client for Chrome (p. 6);
- edit connection settings (p. 10);
- edit Parallels Client settings (p. 14);
- check the version and build number of Parallels Client (p. 15).


In This Chapter

Install Parallels Client for Chrome.....	4
Create a Connection	5
Work With a Remote Server	6

Install Parallels Client for Chrome

System Requirements

To add the Parallels Client extension to your Chrome browser, you must have the Chrome browser version 31.0.1650 or later.

Note: To check the version of your Chrome browser, click the Chrome menu  > **Help** > **About Google Chrome**.

Installation Procedure

The preferred way to install Parallels Client is to follow the instructions from the invitation email. Your Parallels Remote Application Server administrator should send you this email.

Another way to install Parallels Client is to install it from Chrome Web Store. Do the following:

- 1 In the Chrome browser, open Chrome Web Store.
- 2 Search for `Parallels Client`.
- 3 Click **ADD TO CHROME** and follow the onscreen instructions.

Create a Connection

Once Parallels Client for Chrome is installed, you need to connect to Remote Application Server. You can do one of the following to establish a connection:

- if you want Parallels Client to connect to Remote Application Server automatically, follow the instructions from the invitation email. Your system administrator should send you this email.
- If you know the remote server IP address or host name and user's credentials, you can create a connection manually (p. 5).

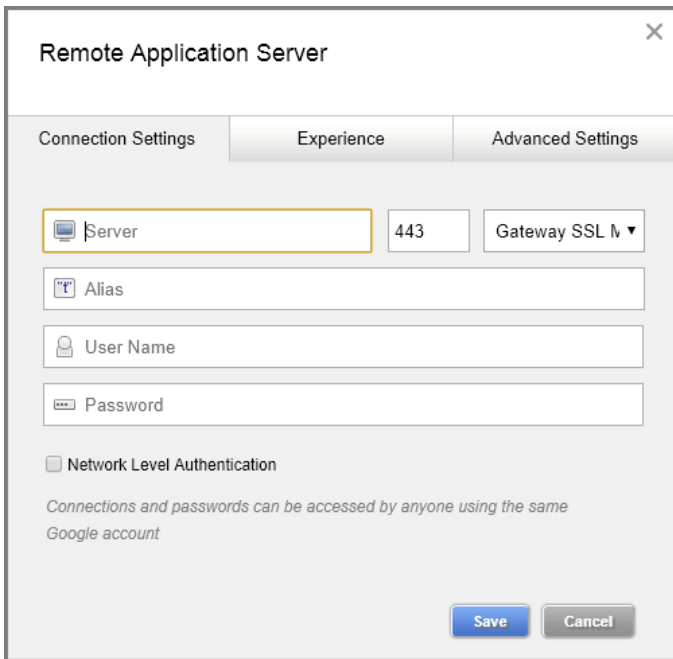
Create a Connection Manually

To create a Remote Application Server connection manually, do the following:

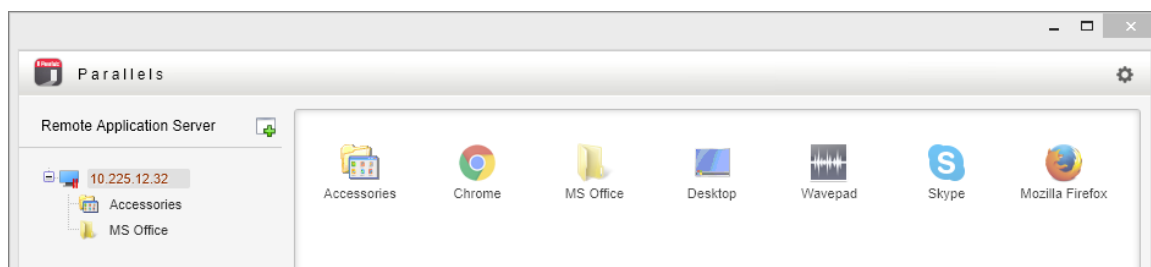
- 1 Open Parallels Client for Chrome by doing the following:
 - If you're working in Chrome OS, click **Launcher** in the left bottom corner, select **All Apps** and click **Parallels Client**.
 - If you're working in Windows, click the **Start** button > **All Programs** > **Chrome Apps** and launch Parallels Client.

You can also launch Parallels Client from **Chrome App Launcher** installed together with the Parallels Client extension. To open **Chrome App Launcher**, click the **Start** button > **All Programs** > **Google Chrome** and select **Chrome App Launcher**.

- 2 Click **Add Remote Application Server** . The following screen appears.



- 3 Specify the **Server**, **Port**, and **Connection Mode** settings.
- 4 Enter your user name.
- 5 Click **Save** when done.
- 6 When asked, enter your password. If the connection was successful, the right pane of the **Parallels Client** window should now display the published resources that you can use. If you receive an error, verify that the connection and logon information is entered correctly and try again.

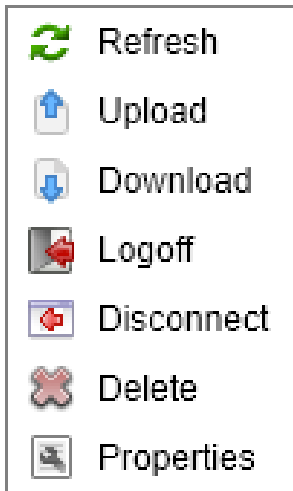


Work With a Remote Server

To connect to Parallels Remote Application Server, double-click a connection in the **Connections** list.

To open a published application, just double-click it or right-click the application and choose **Open**.

Every time you connect to a remote server from Parallels Client, a session is created for the connection. To manage a session, right-click a connection in the **Connections** list.



The context menu has the following options allowing you to perform session management tasks:

- **Refresh.** Use this option to refresh the session and the published resources view in the right pane. If there were changes on the Parallels Remote Application Server side, they will be reflected in the Parallels Client.
- **Upload.** Use this button to upload files to the remote server.
- **Download.** Use this button to download files from the remote server.
- **Logoff.** Logs off Parallels Client from the session.
- **Disconnect.** Disconnect from Remote Application Server. If the selected connection is inactive, this menu item will be disabled.
- **Delete.** Removes the selected connection.
- **Properties.** Opens the window where you can edit various connection properties.

Upload and Download Files

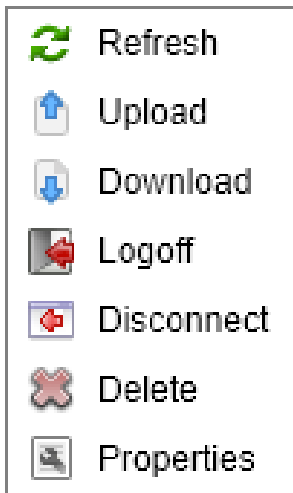
While working with RAS, you can upload files to a remote server as well as download them from it.

Important! To be able to upload and download files, the **Enable Graphics acceleration** option must be deselected in the Parallels Client settings (p. 14).

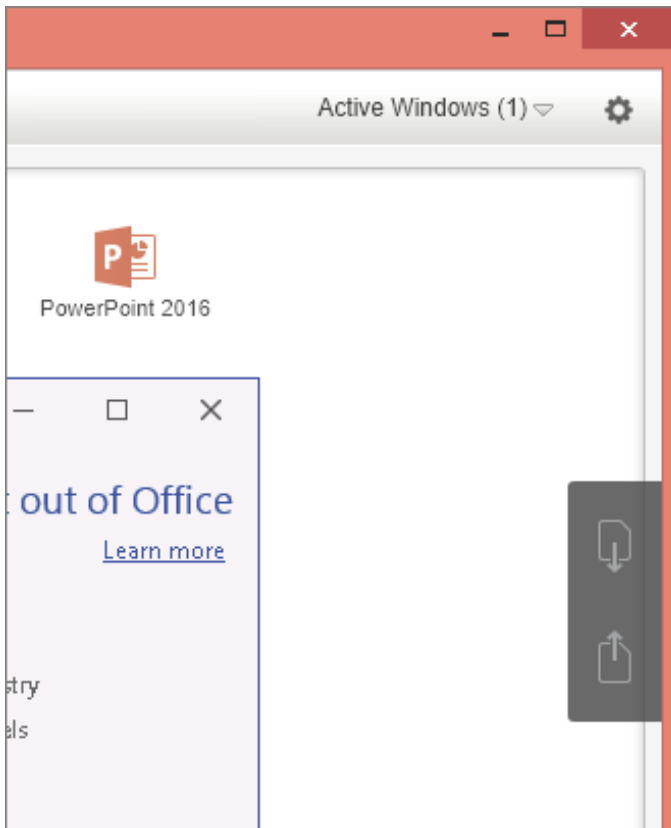
To upload or download a file, do the following:

- 1** Open Parallels Client and establish a connection to Parallels RAS.
- 2** Once connected, open the remote desktop or launch some published application.
- 3** To upload or download a file, use the **Upload** and **Download** buttons. Do one of the following to access them:

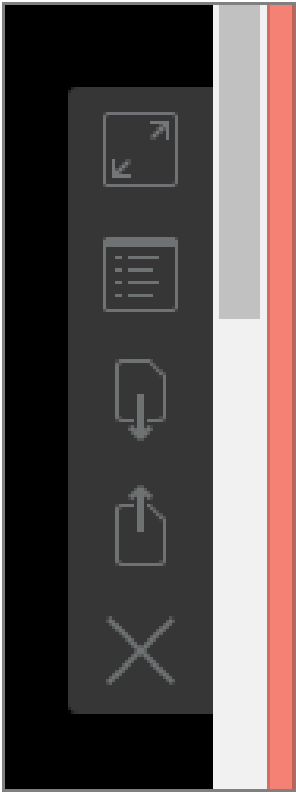
1. If you opened a published application, right-click the connection in the list of connections. The buttons are available in the context menu:



2. If you opened a published application, move the mouse pointer to the right side of the Parallels Client window and hold for a while. The buttons will appear:



3. If you opened the remote desktop, these buttons are available on the right side toolbar:



4. After you click the **Upload** or **Download** button, choose which file you want to upload or download.

Using Parallels Client for Chrome

In This Chapter

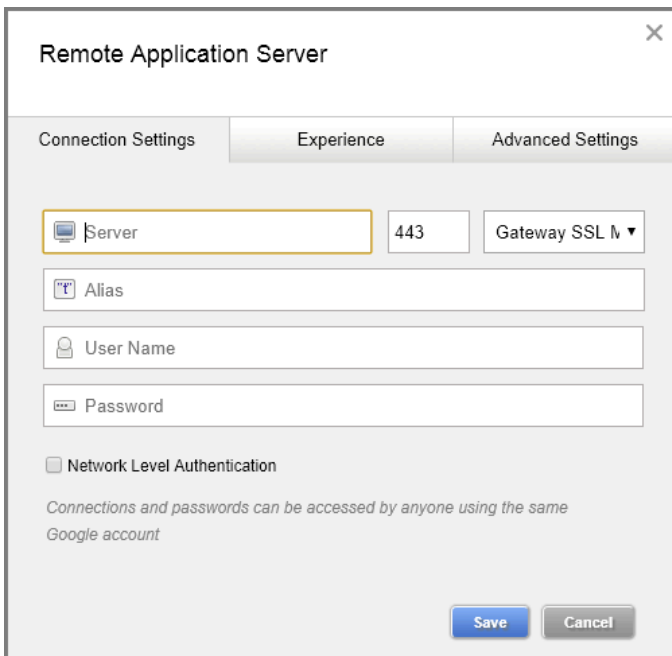
Edit Connection Settings	10
Edit Parallels Client Settings.....	14
Check the Version and Build Number.....	15

Edit Connection Settings

To edit your Remote Application Server connection parameters, do the following:

Note: You should change connection settings only if your system administrator told you to do so.

- 1 Open Parallels Client.
- 2 Right-click the connection which settings you want to edit and choose **Properties**. The following screen appears:



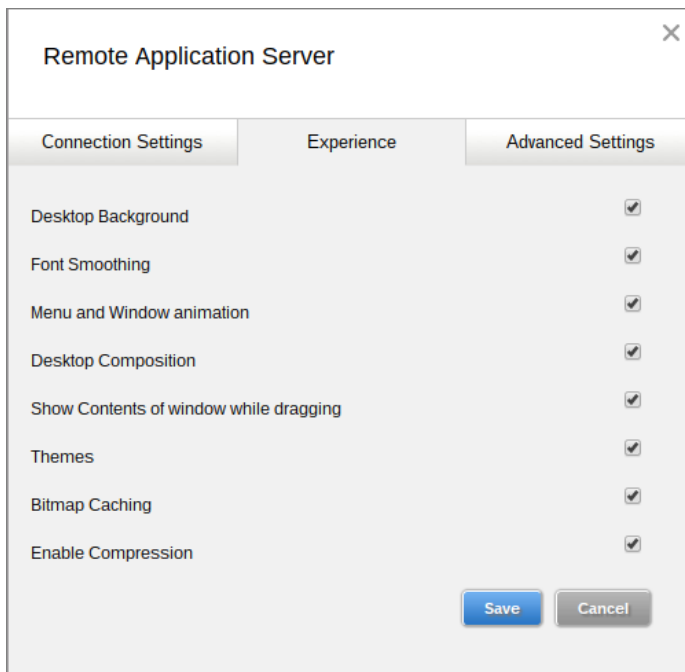
You can edit the following parameters:

- **Server.** In this field, you can change the remote server IP address or host name.

- **Port.** In this field, you can change the port number.
- **Connection Mode.** In this menu, you can change the connection mode.
- **Alias.** In this field, you can change the name of your connection.
- **User Name.** In this field, you can edit the user name.
- **Password.** In this field, you can edit the user's password.
- **Experience.** Click this tab to access the group of visual settings (p. 11).
- **Advanced settings.** Click this tab to access the group of advanced settings (p. 12).

Experience

The **Experience** tab allows you to configure the following options:



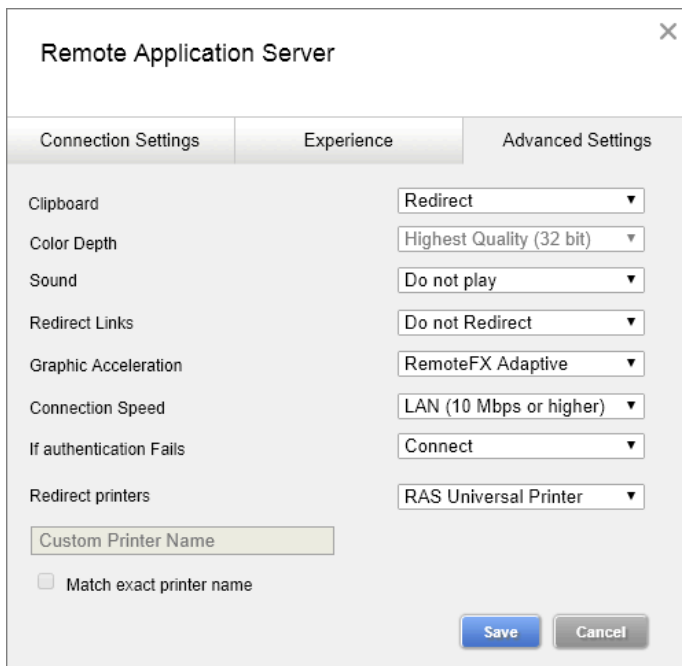
Note: These options make the remote computer desktop, menus and windows look pretty but may slow down the connection speed. It's safe to enable these options if your connection speed is 100 Mbps or faster.

- **Desktop Background.** Enable this option to show the remote computer desktop background.
- **Font Smoothing.** This option makes all fonts smooth for improved readability.
- **Menu and Window animation.** If menus and windows on the remote computer have visual effects and this option is enabled, these effects are also shown on the local device or computer.
- **Desktop Composition.** Desktop composition changes the way windows are depicted on the screen.

- **Show Contents of window while dragging.** Enable this option to show window contents when dragging windows.
- **Themes.** Enable this option to use the remote desktop themes when connected.
- **Bitmap Caching.** This option must be enabled to increase the connection bandwidth efficiency.
- **Enable Compression.** It is recommended to enable this option to have a more efficient connection.

Advanced Settings

The **Advanced Settings** tab allows you to configure the following options:



The screenshot shows a dialog box titled "Remote Application Server" with a close button (X) in the top right corner. The dialog has three tabs: "Connection Settings", "Experience", and "Advanced Settings". The "Advanced Settings" tab is selected. The settings are as follows:

Setting	Value
Clipboard	Redirect
Color Depth	Highest Quality (32 bit)
Sound	Do not play
Redirect Links	Do not Redirect
Graphic Acceleration	RemoteFX Adaptive
Connection Speed	LAN (10 Mbps or higher)
If authentication Fails	Connect
Redirect printers	RAS Universal Printer

Below the settings, there is a text input field labeled "Custom Printer Name" and a checkbox labeled "Match exact printer name". At the bottom right, there are "Save" and "Cancel" buttons.

- **Clipboard.** Use this menu to choose whether to synchronize the clipboards on your computer and the remote server. If you choose **Redirect**, when you copy some plain or formatted text to the clipboard on your computer, this text also becomes available in the clipboard on the remote server and vice versa.
- **Color Depth.** Use this option to specify the color depth.
- **Sound.** This option allows you to specify how the sound on the remote computer should be handled.
- **Redirect Links.** This option allows you to redirect URLs and emails to the device or computer where Parallels Client is installed. Select one of the following options:
 - **Do not Redirect.** Enable this option to disable redirection.
 - **Redirect URLs.** Enable this option to use the local web browser when opening 'http:' links.

- **Redirect Mail.** Enable this option to use the local mail client when opening "mailto:" links.
- **Redirect All.** Enable this option to redirect both URLs and emails to the local device or computer.
- **Graphic Acceleration.** Use this option to select the graphics acceleration type.
- **Connection Speed.** This option allows you to tweak the connection speed to optimize the performance of the connection with the remote host.
- **If Authentication Fails.** This option allows you to specify what happens if the server authentication fails. Select one of the following options:
 - **Connect.** The user can ignore the certificate of the server and still connect.
 - **Warn.** The user is alerted about the certificate and still has the ability to choose whether to connect or not.
 - **Do not connect.** The user is not allowed to connect.
- **Redirect Printers.** This menu allows you to configure printing options. Select the technology to use when redirecting printers to a remote computer:
 - **Do not redirect.** No printer redirection will be configured.
 - **RAS Universal Printer.** Select this option if you want to use RAS Universal Printer.
 - **Custom.** When this option is selected, you can specify a custom printer which might be installed on the remote computer. The first printer that matches the printer name inserted in the custom text box, will be set as the default printer on the remote computer.


Select **Match exact printer name** to match the name exactly as inserted in the custom text box. Please note that the remote printer name might differ from the original printer name. Also note that local printers might not be redirected due to server settings or policies.

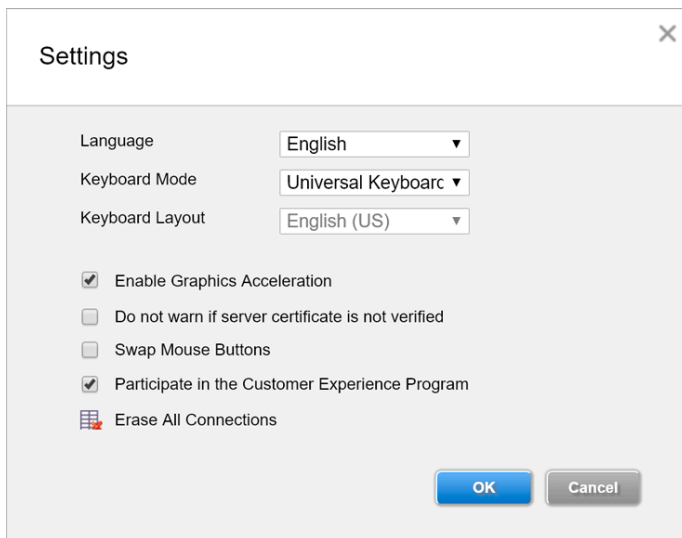
Remove a Connection

To remove a connection, do the following:

- 1 Open Parallels Client.
- 2 Right-click a connection in the left pane and choose **Delete**.

Edit Parallels Client Settings

While working with Parallels Client, you can edit its settings the way you need. To open Parallels Client settings, click  in the top right corner of the Parallels Client window and choose **Settings**.




You can edit the following options:

- **Language.** Select the language of the Parallels Client interface.
- **Keyboard Mode.** When you're working with published applications and need to type something, a native keyboard is used.

If you experience any input problems (for example, the keyboard types wrong keys), try to switch to a PC keyboard. Select **PC Keyboard** from the **Keyboard Mode** menu and choose the keyboard layout you need from the **Keyboard Layout** menu. The selected keyboard will be used until you choose any other keyboard setting.

- **Enable Graphics Acceleration.** Enable this option to be able to change the graphics acceleration type in the connection advanced settings (p. 12).
- **Do not warn if server certificate is not verified.** When connected over SSL, and the certificate is not verified, a warning message will be displayed. You can disable this warning message by enabling this option.
- **Swap Mouse Buttons.** Enable this option to swap the mouse buttons on the remote server.
- **Participate in the Customer Experience Program.** Choose whether you'd like to participate in the customer experience program to help Parallels improve the product. No personal data will be collected.
- **Erase All Connections.** Remove data about all your Remote Application Server connections.

Check the Version and Build Number

To check the version and build number of Parallels Client for Chrome, click  in the top right corner of the Parallels Client window and choose **About**. A window appears showing the version and build number.

Index

A

Advanced Settings - 12

C

Check the Version and Build Number - 15

Create a Connection - 5

Create a Connection Manually - 5

E

Edit Connection Settings - 10

Edit Parallels Client Settings - 14

Experience - 11

G

Getting Started with Parallels Client for
Chrome - 4

I

Install Parallels Client for Chrome - 4

R

Remove a Connection - 13

U

Upload and Download Files - 7

Using Parallels Client for Chrome - 10

W

Work With a Remote Server - 6