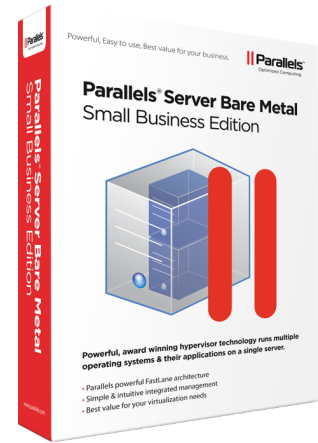


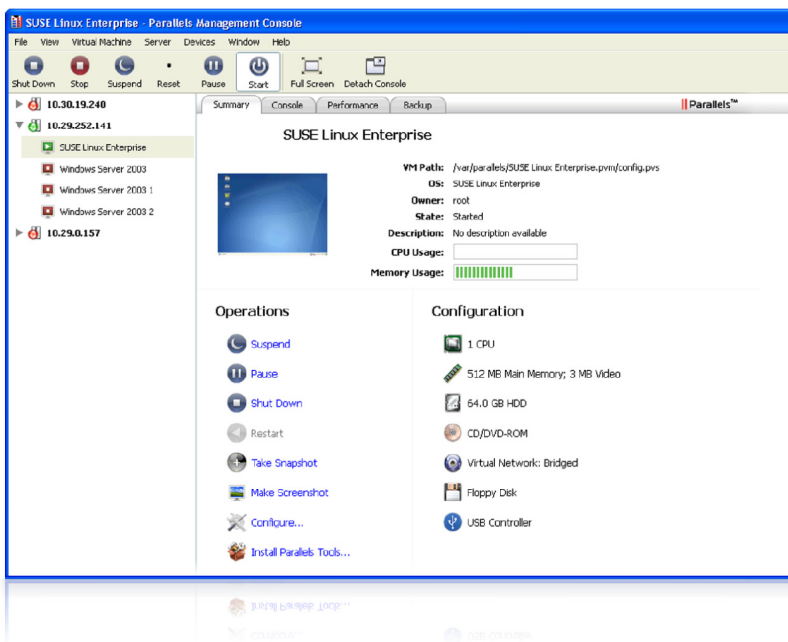
Parallels® Server 4 Bare Metal Small Business Edition



Powerful, award winning hypervisor technology runs multiple operating systems & their applications on a single server

Parallels Server Bare Metal is an OS independent hypervisor solution that leverages the award winning technologies of Parallels desktop virtualization products running on over 2 million machines today. Simple to install & simple to administer, Parallels Server Bare Metal is a cost effective, fully supported server virtualization solution for individual servers.

Parallels Server Bare Metal runs a broad range of operating systems and applications from development and testing environments to business class applications. Installing directly onto a physical server the hypervisor partitions the computer into virtual machines. Using multiple virtual machines users can run a range of operating systems concurrently on the same hardware. The product leverages Parallels' powerful Fastlane architecture offering a highly scalable approach which gives each Virtual Machine up to twelve vCPUs, 64GB vRAM, 2TB vHDDs and 16 vNICs to power through resource intensive applications.



Stop counting CPUs, one server one price
€359* includes 1 year maintenance

Consolidate & save

- Consolidate multiple servers onto a single computer reducing space, power & hardware expenses
- Run your business applications together on one server maximizing the utilization of your investments in hardware

Easy to use management

- Quickly provision new virtual machines, move VMs between servers, setup & manage templates all helping to streamline operations
- Just click to start, stop, reconfigure, snapshot and manage your virtual machine environment

Best value with server based pricing

- Simplified licensing at €359 per server regardless of the number of CPUs. Includes 1 year of gold level maintenance
- Integrated snapshots, backups, live migration & resource monitoring are all included

Usage Scenarios

- Consolidate multiple business applications onto a single server to maximize utilization and reduce space requirements & power consumption
- Quickly provision test & development environments to support agile development without deploying a new server for every project

Parallels Management Console

Parallels Management Console is included with Parallels Server Bare Metal Small Business Edition. This console provides IT professionals with a graphical user interface to manage physical servers and virtual machines. The console provides a centralized view of server information and gives IT administrators an efficient, user friendly interface.

Full featured, supported solution

Parallels Server Bare Metal Small Business Edition provides a simple, cost-effective solution that includes a powerful hypervisor, easy to use graphical user interface, integrated tools and 1 year of maintenance and support.

Features include

- Bare metal installation
- 32 and 64 bit Guest OS support
- Full ACPI support
- Virtual CPU supported
- 64GB virtual RAM support
- Intel VT-x (EPT, VPIDs and FlexPriority) support
- AMD V™ (RVI and Tagged TLB) Support
- Up to 2 TB virtual hard disks
- USB 2.0 support
- Virtual Networking, VLAN support and PXE boot
- Assigning physical network adapters to VMs with Intel VT-d for native network performance
- Virtual machine resource prioritization and limits
- Full and incremental back-ups for virtual machines
- Live migration of VMs between physical servers
- Snapshots & automated scheduling
- Upgrade at any time to the advanced edition to take advantage of OS virtualization through our Linux Containers
- API & SDK available
- Virtual machine templates

Editions

	Small Business Edition	Standard Edition	Advanced Edition
Maximum number of server CPUs	Unlimited	Unlimited	As licensed
Included Management	Parallels Management Console	Parallels Virtual Automation	Parallels Virtual Automation
Multi-user web-based administration	○	●	●
Mass management of servers & virtual environments	○	●	●
Virtual CPUs per virtual machine, Virtual RAM	Up to 12 vCPUs, up to 64GB vRAM	Up to 12 vCPUs, up to 64GB vRAM	Up to 12 vCPUs, up to 64GB vRAM
Resource accounting & reporting	○	●	●
Backup, recovery & snapshots	Included	Included	Included
Live migration	●	●	●
Support	Gold level included	Gold & Platinum available	Gold & Platinum available
Includes Parallels Containers for Linux	○	○	●
Pricing	€359* per server	€699* per server	Call for pricing

* Net price excluding tax

System Requirements

Hardware Requirements

- 1.5 GHz or higher x64-bit processor with Intel VT-x or AMD-V hardware virtualization support
- 2 GB RAM minimum (4 GB recommended)
- Ethernet network adapter
- DVD-ROM drive

Parallels Management Console

- Intel or AMD powered PC or Mac with 700+ MHz x64 processor
- Windows, Linux or Mac OS X operating system
- 1 GB RAM
- 100 MB hard disk space

Guest Operating Systems

- Windows 2000, XP, Vista, Windows 7
- Windows Server 2003, 2008
- Red Hat Enterprise Linux 4, 5
- SUSE Linux Enterprise Server 10
- Debian GNU/Linux 4.0, 5.0
- Ubuntu Linux 8.10, 9.04
- Free BSD 6, 7
- Centos 4, 5
- Fedora 10, 11

To learn more, visit www.parallels.de or contact any authorized reseller partner.