

---

Parallels Software International, Inc.

# Parallels Compressor

## Installation Guide

Server



(c) 2005-2007

*Copyright © 2006-2007 by Parallels Software International Inc. All rights reserved.*

*Parallels, Parallels logo, Compressor and Transporter are registered trademarks; Coherence is a trademark of Parallels Software International, Inc.*

*This product is based on a technology that is the subject matter of a number of pending patent applications.*

*Distribution of this work or derivative of this work in any form is prohibited unless prior written permission is obtained from the copyright holder.*

*Microsoft, Windows, Windows Server, Windows NT, Windows Vista, and MS-DOS are registered trademarks of Microsoft Corporation.*

*Linux is a registered trademark of Linus Torvalds.*

*Apple, Bonjour, Mac, MacBook, Macintosh, and Mac OS are registered trademarks of Apple Computers, Inc.*

*Finder and Safari are trademarks of Apple Inc.*

*Solaris is a trademark of Sun Microsystems, Inc.*

*eComStation is a trademark of Serenity Systems International.*

*FreeBSD is a registered trademark of the FreeBSD Foundation.*

*Inter and Intel Core are trademarks or registered trademarks of Intel Corporation.*

*OS/2 Warp is a registered trademark of International Business Machines Corporation.*

*VMware is a registered trademark of VMware, Inc.*

*All other marks and names mentioned herein may be trademarks of their respective owners.*

# Contents

<b>Overview</b>	<b>4</b>
About Parallels Compressor Server .....	4
Editions of Parallels Compressor .....	4
What Problems Parallels Compressor Solves .....	5
What Installation Type to Choose .....	6
Terms of Use .....	6
System Requirements .....	7
Supported Virtual Platforms .....	7
Requirements for Host OS .....	8
Requirements for Guest OS .....	9
<b>Installing Parallels Compressor Server</b>	<b>10</b>
Downloading Compressor Package .....	10
Installing Parallels Compressor in Host OS .....	11
Installing in Host Windows OS .....	11
Installing in Host Linux OS .....	12
Installing Parallels Compressor in Guest OS .....	14
<b>Activating Parallels Compressor Server</b>	<b>16</b>
Getting an Activation Key .....	17
Activating Compressor in Host OS .....	19
Activating in Host Windows OS .....	19
Activating in Host Linux OS .....	20
Activating Parallels Compressor in Guest OS .....	21
<b>Updating Parallels Compressor Server</b>	<b>24</b>
<b>Uninstalling Parallels Compressor Server</b>	<b>25</b>
Uninstalling Parallels Compressor in Host OS .....	25
Uninstalling in Windows OS .....	25
Uninstalling in Linux .....	26
Uninstalling in Guest OS .....	26

# Overview

This Chapter describes the product and terms of its use.

## In This Chapter

About Parallels Compressor Server .....	4
Editions of Parallels Compressor .....	4
What Problems Parallels Compressor Solves .....	5
What Installation Type to Choose.....	6
Terms of Use .....	6
System Requirements.....	7

---

## About Parallels Compressor Server

Parallels® Compressor® Server is a new easy-to-use Parallels tool which will help you keep your virtual machines efficient for many purposes.

Parallels Compressor allows user to:

- effectively clean up disk space in virtual machine,
- significantly reduce the size of virtual hard disks,
- effectively use the real hard disk resource,
- more easily share with other users smaller virtual disks by burning them to CD/DVDs or moving them over network.

Parallels Compressor Server can be used for virtual machines from different vendors, such as Parallels, VMware, Microsoft.

---

## Editions of Parallels Compressor

Parallels Compressor is available in two editions:

- **Parallels® Compressor® Server.** This powerful tool for compressing virtual machines runs on both server and workstation versions of supported host and guest operating systems and runs on all virtual platforms, including server editions.
- **Parallels® Compressor® Workstation.** This edition of the tool is intended only for workstation versions of host and guest operating systems and runs only on workstation editions of virtual platforms.

---

## What Problems Parallels Compressor Solves

An expanding disk is very size efficient at the beginning of a virtual machine life cycle and becomes less and less efficient as time goes on, because each time writing to disk is requested, the system allocates a new space, and, therefore, the disk size increases. Deleting files does not reduce the size of virtual disk image file in the host (primary) operating system. Eventually, an expanding virtual disk could grow enormously causing a number of inconveniencies.

Parallels Compressor is designed to perform the efficient compressing of virtual disks to significantly increase the ratio of useful data in your virtual machine. The procedure consists of two steps:

- a preparatory step performed in the guest operating system (deleting temporary and unnecessary files, cleaning up unused disk space);
- a shrinking/compacting step (reducing the size of a virtual disk) performed in the the host (primary) operating system. This operation is performed for VMware and Parallels virtual machines; as for Microsoft Virtual PCs, Compressor only recommends to use Microsoft Virtual Disk Wizard to compact a virtual disk.

Parallels Compressor can reduce the size of virtual disks only for expanding disks. For virtual disks in plain format it only performs cleaning (removing of unnecessary files) and defragmentation.

---

## What Installation Type to Choose

Compressor can be installed on a host computer and directly in your virtual machine; it can be run in automatic mode and manually. You should decide which installation type fits your needs better.

### Installation inside virtual machine

A reasonable choice when the virtual machine size is not a critical issue: a virtual machine is in constant use on the same computer and not supposed to be moved around. You use the same virtual machine with expanding disk for a long period of time, for example, for testing successive builds of a new software. Software installations and uninstallations performed multiple times, result in a very large virtual disk.

Run Compressor periodically in this virtual machine to delete unnecessary files, clean up unused space and reduce the size of its disk by the size of unused space. You can schedule its start in automatic mode, say, once a week, by writing an appropriate script.

Moreover, each time you run Compressor, you can customize the compression process: select disks, choose a desired level of disks compression and even particular tasks suggested for this level. Or you can run Compressor in Express mode, when the default options will be used.

### Installation on the host computer

This type of installation saves additional space inside a virtual machine if the size issue is critical. It is more convenient to use if you have several virtual machines on the same computer. Just connect the ISO file with Compressor to a virtual machine's CD-ROM, and Compressor will run automatically, cleaning up and compressing your virtual machine at the default high level. When Compressor completes its work, disconnect the ISO file from one virtual machine and connect it to another.

---

## Terms of Use

Parallels Compressor Server is a product of Parallels Software International, Inc.

The fully functional version of Parallels Compressor Server is available for download at the Parallels Download Center (<http://www.parallels.com/en/download>). To use Parallels Compressor you need to activate it with an activation key. You can get an activation key for Parallels Compressor in one of the following ways:

- pay online at the Parallels Buy Online (<http://www.parallels.com/en/buyonline>) and receive a permanent activation key by email.
- register at the Parallels Download Center (<http://www.parallels.com/en/download>) and get a temporary activation key for the trial period. To continue using Parallels Compressor beyond your trial period you must buy a permanent activation key.

The product is licensed per computer. You can use Parallels Compressor Server on all virtual machines running on your computer. Please read the Parallels Compressor EULA for more detailed information.

---

## System Requirements

Parallels Compressor does not impose any requirements for computer hardware.

Although Compressor is designed to operate inside a virtual machine, it can be installed in the host (primary) operating system. For the remainder of this Guide we will refer to the operating system installed on a real computer as the *host* or *host (primary)* operating system.

Software installed on your computer should meet certain requirements for running Compressor. Before you install the product, please check that:

- your virtual machine is of a supported type,
- the operating system installed on your computer meets the requirements for host (primary) operating systems,
- the operating system installed in a virtual machine meets the requirements for guest operating systems.

---

**Note.** Please check that your virtual machine supports particular host and guest operating systems.

---

## Supported Virtual Platforms

Parallels Compressor Server can be run in virtual machines of the following virtual platforms:

- Parallels Workstation
- VMware Workstation
- VMware GSX server
- Microsoft Virtual PC
- Microsoft Virtual Server

## Requirements for Host OS

To use Parallels Compressor Server in your virtual machine you should have one of these host (primary) operating systems:

### Windows Host Operating Systems (32-Bit)

- Windows Server 2003 Standard Edition SP0, SP1
- Windows Server 2003 Enterprise Edition SP0, SP1
- Windows Server 2003 Web Edition SP0, SP1
- Windows XP Professional SP2
- Windows XP Home Edition SP2
- Windows 2000 Professional SP4
- Windows 2000 Server SP4
- Windows 2000 Advanced Server SP4

### Windows Host Operating Systems (64-Bit)

- Windows Server 2003 x64 Edition SP1
- Windows XP Professional x64 Edition SP1

### Linux Host Operating Systems (32-bit):

- Red Hat Enterprise Linux WS4
- Red Hat Enterprise Linux AS4
- Red Hat Enterprise Linux WS3
- Red Hat Enterprise Linux ES4
- Red Hat Enterprise Linux ES3
- Red Hat Linux 9
- Red Hat Linux 8
- Red Hat Linux 7.3
- Debian Linux 3.1
- Fedora Core Linux 4
- Fedora Core Linux 3
- SUSE Linux 10
- SUSE Linux 9.3
- SUSE Linux 9.2
- SUSE Linux 9.1
- SUSE Linux 9.0
- Mandriva Linux 10.1
- Mandriva Linux 10
- Mandriva Linux 9.2

### Linux Host Operating Systems (64-Bit)

- Red Hat Enterprise Linux 4
- Red Hat Enterprise Linux 3
- SUSE Linux 10
- SUSE Linux Enterprise Server 9
- SUSE Linux Pro 9.3
- SUSE Linux Pro 9.2

SUSE Linux Pro 9.1

## Requirements for Guest OS

The current version of Parallels Compressor Server uses specifics of Microsoft Windows operating systems. To run Parallels Compressor in your virtual machine you should have one of the following guest operating systems:

### Windows Guest Operating Systems (32-Bit)

- Windows Server 2003 Standard Edition SP0, SP1
- Windows Server 2003 Enterprise Edition SP0, SP1
- Windows Server 2003 Web Edition SP0, SP1
- Windows Server 2003 Small Business Edition SP0, SP1
- Windows XP Professional Edition SP2
- Windows XP Home Edition SP2
- Windows 2000 Professional SP4
- Windows 2000 Server SP4
- Windows 2000 Advanced Server SP4

### Windows Guest Operating Systems (64-Bit)

- Windows Server 2003 x64 Edition SP1
- Windows XP Professional x64 Edition SP1

# Installing Parallels Compressor Server

This Chapter provides the information on installation of Parallels Compressor.

## In This Chapter

Downloading Compressor Package .....	10
Installing Parallels Compressor in Host OS .....	11
Installing Parallels Compressor in Guest OS .....	14

---

## Downloading Compressor Package

Parallels Compressor can be installed either in host (primary) or in guest operating systems. Several packages are available for download at the Parallels Download Center <http://www.parallels.com/en/download/>. You have to download the correct package that fits your needs.

### For installation in guest operating system

- `Parallels-Cps-Srv-XXXX-Win.exe` for installation in virtual machine regardless of what host (primary) operating system you have. Check that your guest operating system is supported.

### For installation in host (primary) operating system

- `Parallels-Cps-Srv-XXXX-Win.exe` for all supported Microsoft Windows host (primary) operating systems;
- the following files are for Linux operating systems:
  - `Parallels-cps-srv-XXXX-lin.i386.rpm`
  - `Parallels-cps-srv-XXXX-lin.tgz`
  - `Parallels-cps-srv-XXXX-lin.deb`

Choose the package which is supported by your Linux host (primary) operating system.

Before you download the selected file please read the Terms of Use.

---

# Installing Parallels Compressor in Host OS

To install Parallels Compressor in the host (primary) operating system choose an installation package from the list of available for downloading, depending on what host (primary) operating system is installed on your computer:

## Installing in Host Windows OS

---

**Note.** You must have power user or administrator rights to install the program in the Windows operating systems.

---

To install Parallels Compressor:

- 1 Run the `Parallels-Cps-Srv-XXXX-Win.exe` file.
- 2 Installation wizard starts and displays the **Welcome** dialog box. Click **Next** to continue.
- 3 **The License agreement.** Read the license agreement. Click **I accept the agreement** and then **Next** or click the **Cancel** button to exit the wizard.
- 4 **Product activation.** Input the customer information: your name and the name of company you work for (these fields are optional).

You can choose one of the following options:

- input your activation key. Click **Next**;
  - buy a permanent activation key. The **Buy** button redirects you to the Parallels Buy Online Page (<http://www.parallels.com/en/buyonline>);
  - get a temporary activation key by clicking the **Register at site** button which redirects to the Parallels Download Center (<http://www.parallels.com/en/download>);
  - skip the activation by clicking the **Activate later** button.
- 5 Select where to place the program shortcuts:
    - on the Desktop
    - on the Start menu
    - on the Quick Launch menu
  - 6 Click **Next**.
  - 7 **Location for Parallels Compressor.** Select a location for the program. The default folder is:  
`C:\Program Files\Parallels\Parallels Compressor.`  
Click **Change** to specify the location different from the default. Click **Next**.
  - 8 The wizard is ready to install the program. Click **Install**.
  - 9 When the installation is completed, select the **Open folder with new installation** check box to view the Parallels Compressor files and click **Finish**.

In the process of installation, the following files are placed to the specified Parallels Compressor folder:

- ParallelsCompressor.iso
- Parallels Compressor User Guide.pdf
- ParallelsCompressor.chm
- CpsLicense.exe
- Readme.txt
- EULA.txt

### Known issues

When you install Parallels Compressor on Windows XP or Windows Server 2003 the following error may occur: Error Code: -5006 : 0x80004005 .

- 1 Close all applications and exit all other setups.
- 2 Launch Parallels Compressor setup once again.

If the error still appears, try the the following steps:

- 1 From the Start menu, choose Control Panel -->Add / Remove Programs.
- 2 On the left panel select Add New Programs.
- 3 Click the CD or Floppy button.
- 4 The Install Program from Floppy or CD dialog box appears, click Next.
- 5 System searches your Floppy and CD drives, then displays the Run Installation Program dialog box.
- 6 Click Browse and locate the Parallels Compressor installation file.
- 7 Click Next and the installation will begin.

Most likely, the program will be installed successfully after these steps.

## Installing in Host Linux OS

Depending on what file types your Linux system supports, download one of the following packages: RPM, DEB or TGZ archive.

---

**Note.** To install Parallels Compressor on a Linux computer, you need root privileges.

---

To install Compressor in host (primary) operating system follow the steps below:

- 1 Launch the Terminal program.
- 2 Run the

**su**

command to gain root privileges. Enter the password to the root account when prompted.

**3** If RPM format is supported in your system:

- Locate the `Parallels-cps-srv-XXXX-lin.i386.rpm` file.
- To start installation, enter the following command:

```
rpm -i Parallels-cps-srv-XXXX-lin.i386.rpm
```

Go to Step 7.

**4** If DEB is supported in your system:

- Locate the file `Parallels-cps-srv-XXXX-lin.deb`
- To start installation, enter the following command:

```
dpkg -i Parallels-cps-srv-XXXX-lin.deb
```

Go to Step 7.

**5** If both RPM and DEB formats are not supported in your system:

- Locate the `Parallels-cps-srv-XXXX-lin.tgz` archive and extract files into any existing directory:

```
tar -xzf Parallels-cps-srv-XXXX-lin.tgz
```

- go to the directory where the files were unpacked:

```
cd parallels-compressor
```

**6** To install Parallels Compressor type the following command:

```
./install.sh
```

**7** To activate Parallels Compressor enter the following command:

```
cpsactivate <activation key>
```

where `<activation key>` stands for the 25-symbol key itself.

**8** When the installation is completed, enter the following command:

```
exit
```

to quit the root account.

In the process of installation, the following files were placed to the Parallels Compressor folder (by default, `/usr/share/parallels-compressor/`):

- `parallels-compressor.iso`
- `parallels_compressor_user_guide.pdf`
- `README`
- `LICENSE`
- `cpsactivate`

---

## Installing Parallels Compressor in Guest OS

To install Compressor in your virtual machine:

- check that Compressor supports your guest operating system,
- download the `Parallels-Cps-Srv-XXXX-Win.exe` file.

Before you start the installation, copy the Compressor installation file inside your virtual machine by the means available in your virtual machine: via network connection if it's configured, by drag-and-drop (VMware), using an ISO image of this installation file (all virtual platforms) and so forth.

---

**Note.** You must have power user or administrator rights to install the program in the Windows operating systems.

---

To install Parallels Compressor:

- 1 Run the `Parallels-Cps-Srv-XXXX-Win.exe` file.
- 2 Installation wizard starts and displays the **Welcome** dialog box. Click **Next** to continue.
- 3 **The License agreement.** Read the license agreement. Click **I accept the agreement** and then **Next** or click the **Cancel** button to exit the wizard.
- 4 **Product activation.** Input the customer information: your name and the name of company you work for (these fields are optional).

You can choose one of the following options:

- input your activation key. Click **Next**;
  - buy a permanent activation key. The **Buy** button redirects you to the Parallels Buy Online Page (<http://www.parallels.com/en/buyonline>);
  - get a temporary activation key by clicking the **Register at site** button which redirects to the Parallels Download Center (<http://www.parallels.com/en/download>);
  - skip the activation by clicking the **Activate later** button.
- 5 Select where to place the program shortcuts:
    - on the Desktop
    - on the Start menu
    - on the Quick Launch menu
  - 6 Click **Next**.
  - 7 **Location for Parallels Compressor.** Select a location for the program. The default folder is:  
`C:\Program Files\Parallels\Parallels Compressor.`  
Click **Change** to specify the location different from the default. Click **Next**.
  - 8 The wizard is ready to install the program. Click **Install**.

- 9 When the installation is completed, select the **Open folder with new installation** check box to view the Parallels Compressor files and click **Finish**.

In the process of installation, the following files are placed to the specified Parallels Compressor folder:

- ParallelsCompressor.exe
- ParallelsCompressor.chm
- Parallels Compressor User Guide.pdf
- Readme.txt
- EULA.txt

### Known issues

When you install Parallels Compressor on Windows XP or Windows Server 2003 the following error may occur: **Error Code: -5006 : 0x80004005**.

- 1 Close all applications and exit all other setups.
- 2 Launch Parallels Compressor setup once again.

If the error still appears, try the the following steps:

- 1 From the **Start** menu, choose **Control Panel -->Add / Remove Programs**.
- 2 On the left panel select **Add New Programs**.
- 3 Click the **CD or Floppy** button.
- 4 The **Install Program from Floppy or CD** dialog box appears, click **Next**.
- 5 System searches your Floppy and CD drives, then displays the **Run Installation Program** dialog box.
- 6 Click **Browse** and locate the Parallels Compressor installation file.
- 7 Click **Next** and the installation will begin.
  - Most likely, the program will be installed successfully after these steps.

# Activating Parallels Compressor Server

This Chapter provides all the information necessary for activating Parallels Compressor Server. To run Parallels Compressor you should activate it with an activation key, please read the Terms of Use (page 6) and Getting an Activation Key (page 17) topics.

---

**Note.** Your copy of Parallels Compressor Server is already active if you entered the activation key during the installation.

---

## In This Chapter

Getting an Activation Key .....	17
Activating Compressor in Host OS.....	19
Activating Parallels Compressor in Guest OS .....	21

---

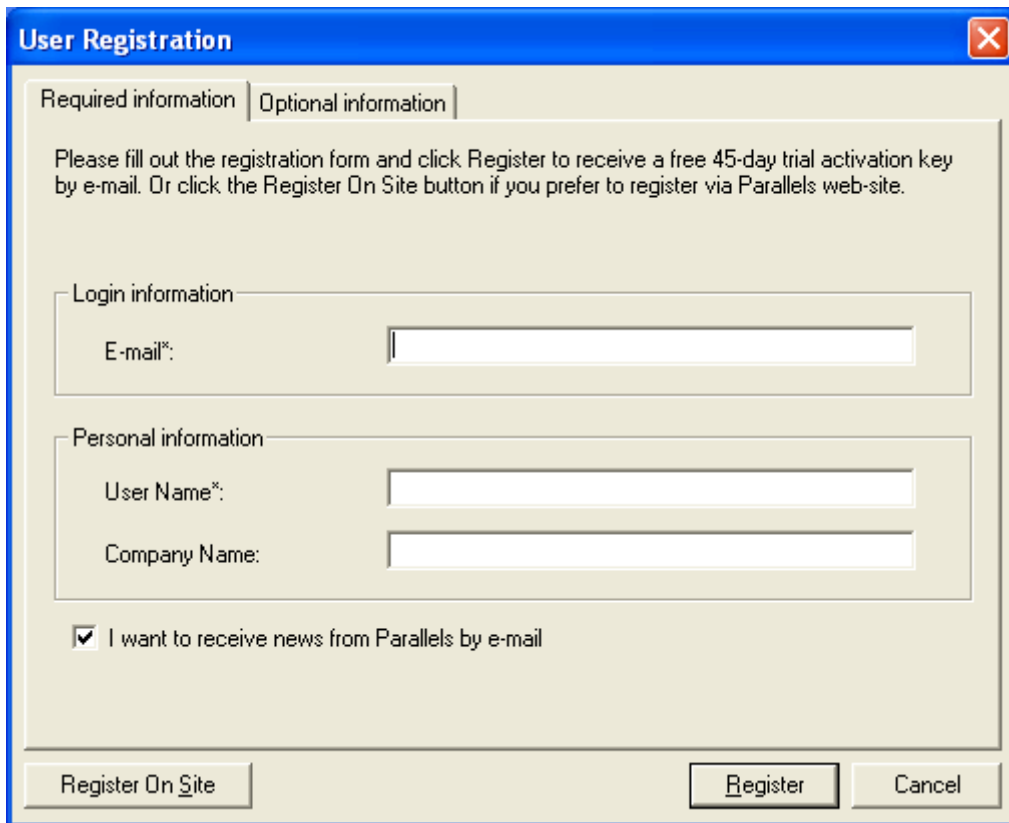
## Getting an Activation Key

You may get a free temporary activation key valid only for a trial period or you can buy a permanent activation key.

To get a permanent activation key buy it at the Parallels web-site (<http://www.parallels.com/en/buyonline>).

To get a temporary activation key valid only for a trial period:

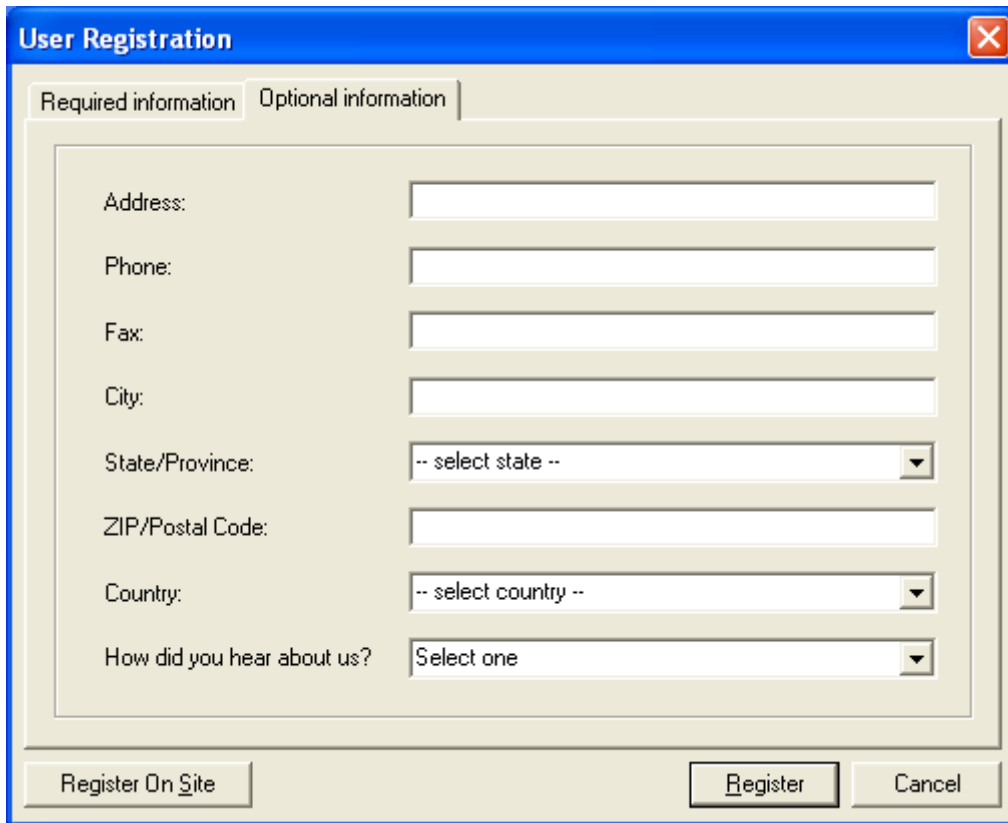
- register at the Parallels Download Center (<http://www.parallels.com/en/download>).
- launch Parallels Compressor, click the **Get activation key** button on the Parallels Compressor dialog box. The **User Registration** form appears.



The image shows a 'User Registration' dialog box with a blue title bar and a close button (X) in the top right corner. It has two tabs: 'Required information' (selected) and 'Optional information'. Below the tabs is a text box with the following text: 'Please fill out the registration form and click Register to receive a free 45-day trial activation key by e-mail. Or click the Register On Site button if you prefer to register via Parallels web-site.' Below this text are two sections: 'Login information' containing an 'E-mail\*' label and a text input field; and 'Personal information' containing 'User Name\*' and 'Company Name' labels, each with a corresponding text input field. At the bottom of the form is a checked checkbox labeled 'I want to receive news from Parallels by e-mail'. At the very bottom of the dialog are three buttons: 'Register On Site', 'Register', and 'Cancel'.

On the **User Registration** form, specify your e-mail and your name. The **Name** and **Company Name** fields are optional. Specify if you want to receive news from Parallels by email.

Fill out the form on the **Optional Information** tab too.



The image shows a 'User Registration' dialog box with a blue title bar and a close button (X) in the top right corner. It has two tabs: 'Required information' and 'Optional information'. The 'Optional information' tab is selected. The form contains the following fields:

- Address: [Text input field]
- Phone: [Text input field]
- Fax: [Text input field]
- City: [Text input field]
- State/Province: [Dropdown menu with "-- select state --"]
- ZIP/Postal Code: [Text input field]
- Country: [Dropdown menu with "-- select country --"]
- How did you hear about us?: [Dropdown menu with "Select one"]

At the bottom of the dialog box, there are three buttons: 'Register On Site', 'Register', and 'Cancel'.

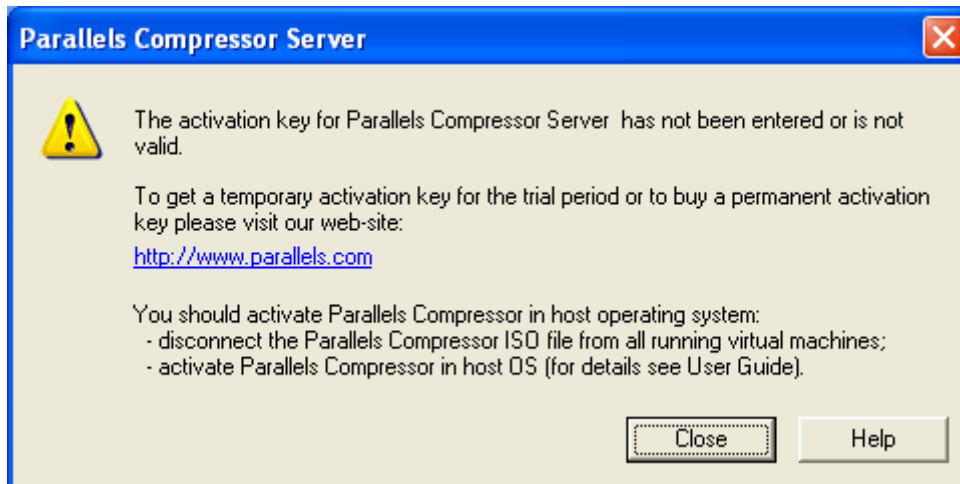
You'll receive a temporary activation key for the trial period by email.

---

## Activating Compressor in Host OS

If Parallels Compressor was installed in the host operating system, it should be activated on the host.

If you try to run non-activated Parallels Compressor in your virtual machine by connecting its ISO image file to the virtual machine's CD/DVD-ROM, you will see the following message:



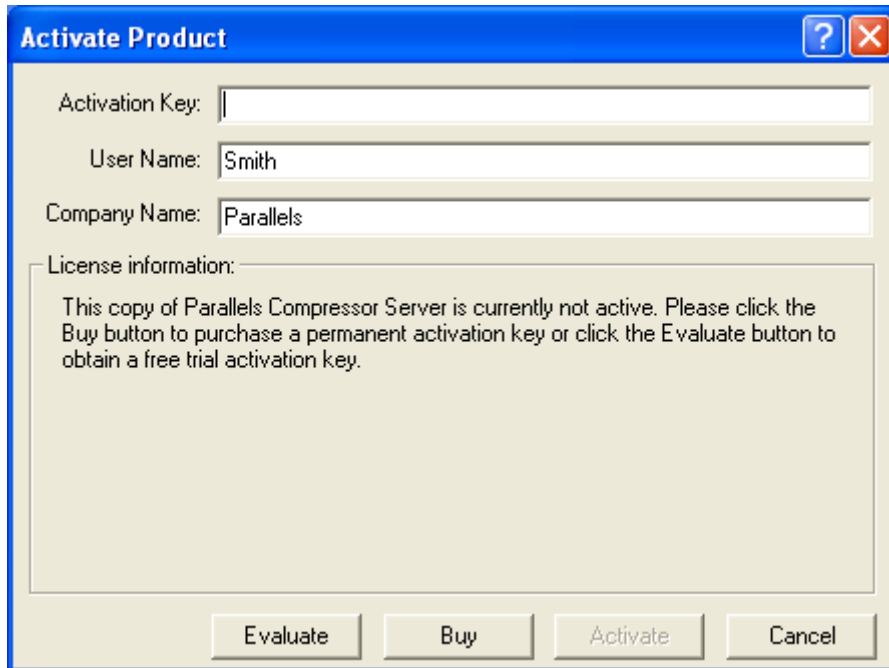
The procedures of activation of Parallels Compressor (after the installation has been completed) are slightly different for different host operating systems, and are described in topics below.

## Activating in Host Windows OS

To activate Parallels Compressor in the host Windows operating system with a temporary or permanent activation key follow the steps below:

- 1 Disconnect the Parallels Compressor ISO file from all running virtual machines if it was connected.
- 2 You can start the activation in one of the following ways:
  - Select Start --> Programs--> Parallels--> Parallels Compressor--> Activate Parallels Compressor.
  - Click the CpsLicense.exe file (activator utility), located in the Parallels Compressor installation folder (by default, C:\Program Files\Parallels\Parallels Compressor).

- 3 The Activate Product dialog box appears.



- 4 On the Activate Product dialog box fill in the following fields:
- the Activation Key field, enter the activation key that you received by email. Once this field is not blank, the Activate button becomes enabled.
  - the User Name and Company Name fields. These fields are optional, automatically filled by data taken from Windows system settings.
- 5 Click the Activate button. If you have entered a valid activation key, the following confirmation message will be displayed: "Parallels Compressor has been activated successfully. Thank you!"

After that, your copy of the Parallels Compressor becomes activated and you may use all of its features and capabilities.

The License information box describes your current activation status: non-activated, activated, active trial period, expired trial period, activated permanently, expired permanent. If your copy was activated, all license-related information is displayed here.

## Activating in Host Linux OS

If you skipped the product activation during the installation, you'll be required to enter an activation key before you'll be able to run the program.

---

**Note.** To activate Parallels Compressor on a Linux computer, you need root privileges.

---

To activate Parallels Compressor in Linux do the following:

- 1 Disconnect the Parallels Compressor ISO image from all running virtual machines.
- 2 Launch the Terminal program.
- 3 Run the

```
su
```

command to gain root privileges. Enter the password to the root account when prompted.

- 4 For all Linux operating systems enter the following command:

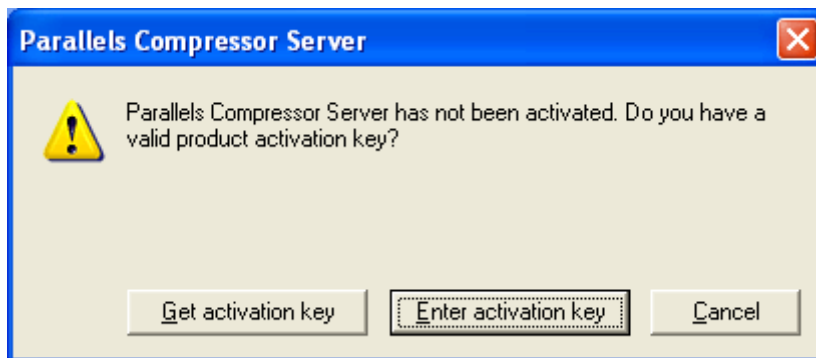
```
/usr/share/parallels-compressor/cpsactivate <activation key>
```

If the registration is successful, you will get an appropriate message.

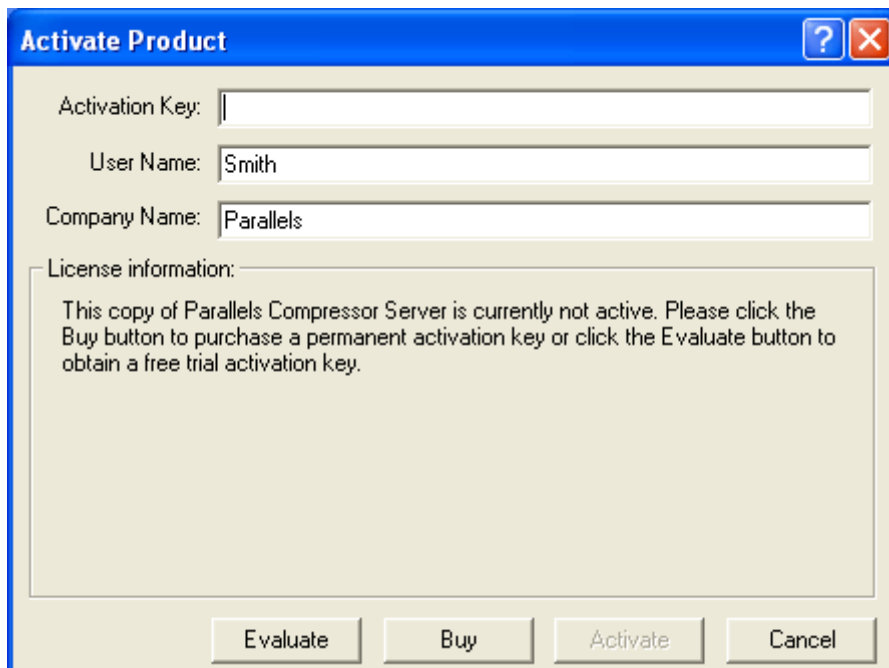
## Activating Parallels Compressor in Guest OS

If you are going to activate Parallels Compressor, which was installed in the guest operating system, perform the following operations:

- 1 Click the Enter activation key button on the Parallels Compressor dialog box. The Parallels Compressor dialog box appears.



- 2 The Activate Product dialog box appears.



- 3 On the Activate Product dialog box fill in the following fields:

- the **Activation key** field, enter the activation key that you received by email. Once this field is not blank, the **Activate** button becomes active.
  - the **User Name** and **Company Name** fields. These fields are optional, automatically filled by data taken from Windows system settings.
- 4 Click the **Activate** button. If you have entered a valid activation key, the following confirmation message will be displayed: "Parallels Compressor has been activated successfully. Thank you!"

After that, your copy of the Parallels Compressor becomes activated and you may use all of its features and capabilities.

The **License information** box describes your current activation status: inactive, active trial, expired trial period, active permanent, expired permanent. If you have an activated copy, trial or permanent, all license-related information is displayed here.

### Activating Parallels Compressor via the command line

If the program was installed in a virtual machine, it also can be activated in the following way:

- 1 Click **Start --> Run** to open command line (the `cmd` program).
- 2 Change the folder to **Program files-->Parallels-->Parallels Compressor**.
- 3 Enter the command:

```
ParallelsCompressor /R <activation key>
```

where the <activation key> should be substituted for a 25-symbol activation key itself.

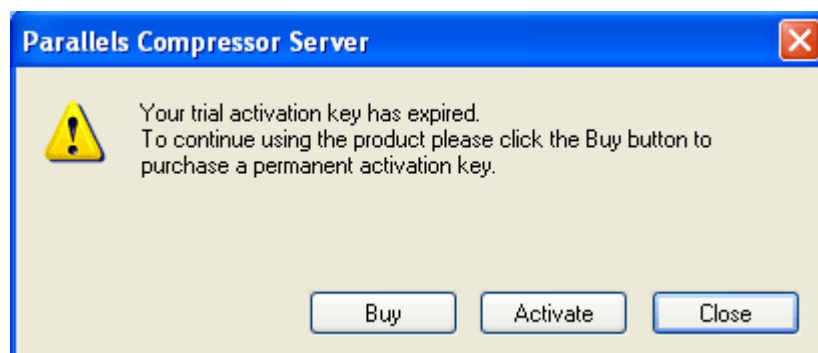
- 4 Parallels Compressor displays the dialog box as one above, and you can enter your activation key and other required information to activate the product.

### Activating Parallels Compressor after the trial period

If you entered a temporary activation key to use the product during a trial period, and then get a permanent activation key, you should re-activate your copy of Parallels Compressor with a permanent key.

You can re-activate it at any time by clicking the **Activate** button on the trial period information panel which appears each time you run the program when your trial period is going to its end.

Once the trial period has expired, you can see the following dialog box:



To re-activate the program with a permanent activation key follow the steps:

- 1** Start Parallels Compressor. It displays the same dialog with the **Close** button in place of **Continue**.

Click the **Activate** button.

- 2** On the next dialog box enter the activation key. Click the **Activate** button.

# Updating Parallels Compressor Server

The update procedure for Parallels Compressor Server consists of the following steps:

- 1 Getting to know about a new update. We recommend that you visit the Downloads Center <http://www.parallels.com/en/download/> at the Parallels web-site.
- 2 Download a new version of the Parallels Compressor package you used for installation.
- 3 When download is completed, log in the host (primary) or in the guest operating system depending on where Parallels Compressor was installed originally. If it is the guest operating system, copy the downloaded file into your virtual machine.
- 4 For updating in the host operating system, disconnect the Parallels Compressor ISO file from all running virtual machines.
- 5 The installation of the update is similar to the installation of the product itself. Follow the steps described by the appropriate topic in this Guide.

**Warning.** Please do not upgrade any of versions of Parallels Compressor Workstation with Parallels Compressor Server update (and vice versa). Parallels Compressor Workstation should be removed before you start installation of the other edition of the program.

# Uninstalling Parallels Compressor Server

Uninstallation of Parallels Compressor is performed in the same operating system where it was installed whether it is host (primary) operating system or guest operating system.

## In This Chapter

Uninstalling Parallels Compressor in Host OS .....	25
Uninstalling in Guest OS .....	26

---

## Uninstalling Parallels Compressor in Host OS

Uninstallation of Parallels Compressor is performed in host operating system, if installation was done in the host operating system.

### Uninstalling in Windows OS

Uninstallation of Compressor is performed in the same operating system where it was installed whether it is host (primary) operating system or guest operating system.

---

**Note.** You must have power user or administrator rights to uninstall the program in Windows operating systems.

---

To uninstall Compressor:

- 1 If the program was installed in the host (primary) operating system, disconnect the `ParallelsCompressor.iso` file from all running virtual machines.
- 2 Removing of Parallels Compressor can be performed in one of the following ways:
  - In the same operating system where Parallels Compressor was installed (guest or host), click **Start --> Control Panel --> Add / Remove Programs**. On the program list select Parallels Compressor and click **Remove**;
  - Locate the installation file (`Parallels-Cps-Srv-XXXX-Win.exe`). Click this file to start the wizard which will remove the installation.
- 3 Follow the steps of the installation wizard.

The program will be uninstalled, and its folder (the default folder is `C:\Program Files\Parallels\Parallels Compressor`) will be removed.

## Uninstalling in Linux

Uninstallation of Parallels Compressor is performed in the host (primary) operating system if it was installed in the host (primary) operating system.

To uninstall Parallels Compressor in Mac OS X follow the steps below:

- 1 Open the **Parallels Compressor Server** window double-clicking the Parallels Compressor icon in the Applications folder or on the Dock.
- 2 Select the **Uninstall** radio button and click **Continue** to start uninstallation.
- 3 Enter your user name and password to confirm that you have proper privileges to uninstall programs. Click **OK**.

When Parallels Compressor is uninstalled, click **Close**.

---

## Uninstalling in Guest OS

Uninstallation of Compressor is performed in the same operating system where it was installed whether it is host (primary) operating system or guest operating system.

---

**Note.** You must have power user or administrator rights to uninstall the program in Windows operating systems.

---

To uninstall Compressor:

- 1 If the program was installed in the host (primary) operating system, disconnect the `ParallelsCompressor.iso` file from all running virtual machines.
- 2 Removing of Parallels Compressor can be performed in one of the following ways:
  - In the same operating system where Parallels Compressor was installed (guest or host), click **Start --> Control Panel --> Add / Remove Programs**. On the program list select Parallels Compressor and click **Remove**;
  - Locate the installation file (`Parallels-Cps-Srv-XXXX-Win.exe`). Click this file to start the wizard which will remove the installation.
- 3 Follow the steps of the installation wizard.

The program will be uninstalled, and its folder (the default folder is `C:\Program Files\Parallels\Parallels Compressor`) will be removed.